

BLUE VERVAIN



HOLSTEIN

14HO17319 S-S-I FELIX BLUE VERVAIN-ET **A2A2**

FELIX X PROLOGUE X RENEGADE TR TP TM TC TL TD TE HH1T HH2T HH3T HH4T HH5T HH6T

HOLSTEIN NASIS: 80FFWFW **BETA CASEIN: A2A2**

\$32 RRP \$24 SPECIAL \$65 SEXED \$55 SEXED SPECIAL

BPI: 566 OT: 98 MS: 100

MILKING SPEED: 103 TEMP: 102

DAM: S-S-I PROLOGUE 3494-ET G-79
1-11 3X 340D 14447 KGM 4.9% 707 KGF 3.4% 493 KGP
MGD: S-S-I RENEGDE 8645 10904-ET



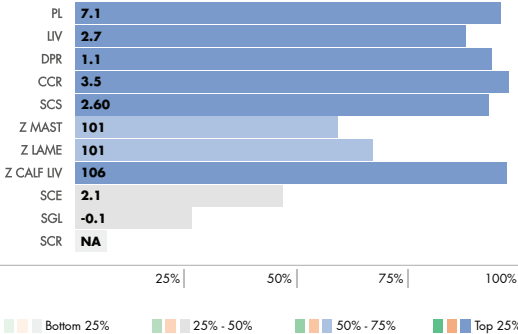
INDEXES



PRODUCTION



HEALTH AND FERTILITY TRAITS



PHYSICAL TRAIT EVALUATION

CDCB/HA Genetic Eval. 12-24

0 dtrs. 0 herds
78% Rel.

PTAT: 0.89 UDC: 1.24 FLC: -0.67 TPI: 3155

Stature	Short	1.27	Tall
Strength	Frail	0.12	Strong
Body Depth	Shallow	-0.14	Deep
Dairy Form	Tight Ribbed	0.64	Open Ribbed
Rump Width	Narrow	0.94	Wide
Rump Angle	High Pins	0.22	Sloped
Rear Leg (side view)	Posty	0.24	Sickled
Rear Leg (rear view)	Hock-in	-0.76	Straight
Foot Angle	Low Angle	0.18	Steep Angle
Feet & Leg Score	Low	-0.27	High
Fore Udder	Loose	1.72	Strong
Rear Udder Height	Low	1.57	High
Rear Udder Width	Narrow	1.48	Wide
Udder Cleft	Weak	0.27	Strong
Udder Depth	Deep	2.06	Shallow
Front Teat Placement	Wide	-0.16	Close
Rear Teat Placement	Wide	-0.26	Close
Teat Length	Short	-0.13	Long



12-24
GUSA CDCB,
IB/MACE,
CDN and Zoetis
Genomic Eval.

HALIANT-P



7HO17162 SIEMERS HALIANT-P-ET **A2A2**

PAZZLE X LUSTER-P X DOC TR PC TM TC TY TV TL TD TE HH1T HH2T HH3T HH4T HH5T HH6T

HOLSTEIN NASIS: 80FFVR1 **BETA CASEIN: A2A2**

\$36 RRP \$26 SPECIAL \$70 SEXED \$60 SEXED SPECIAL

BPI: 392 OT: 104 MS: 108

MILKING SPEED: 102 TEMP: 103

DAM: SIEMERS LSTR HANAN 33317-ET EX-91
3-03 2X 337D 17867 KGM 3.9% 698 KGF 3.4% 599 KGP
MGD: SIEMERS DOC HANAN 28286-ET EX-92
3-05 2X 365D 18289 KGM 4.3% 782 KGF 3.4% 614 KGP



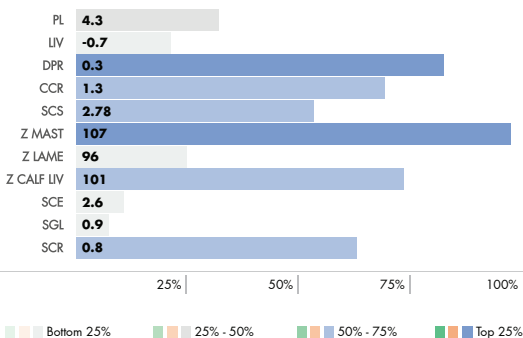
INDEXES



PRODUCTION



HEALTH AND FERTILITY TRAITS



PHYSICAL TRAIT EVALUATION

CDCB/HA Genetic Eval. 12-24

0 dtrs. 0 herds
80% Rel.

PTAT: 3.08 UDC: 2.28 FLC: 2.13 TPI: 3003

Stature	Short	2.26	Tall
Strength	Frail	1.36	Strong
Body Depth	Shallow	2.20	Deep
Dairy Form	Tight Ribbed	3.34	Open Ribbed
Rump Width	Narrow	3.05	Wide
Rump Angle	High Pins	-1.24	Sloped
Rear Leg (side view)	Posty	0.99	Sickled
Rear Leg (rear view)	Hock-in	2.95	Straight
Foot Angle	Low Angle	2.24	Steep Angle
Feet & Leg Score	Low	2.35	High
Fore Udder	Loose	2.84	Strong
Rear Udder Height	Low	3.31	High
Rear Udder Width	Narrow	3.72	Wide
Udder Cleft	Weak	2.42	Strong
Udder Depth	Deep	1.17	Shallow
Front Teat Placement	Wide	2.50	Close
Rear Teat Placement	Wide	2.80	Close
Teat Length	Short	1.22	Long



12-24
GUSA CDCB,
IB/MACE,
CDN and Zoetis
Genomic Eval.

KARMA-PP



7HO17101 COLDSPRINGS KARMA-PP-ET **A2A2**

ISON-P X LUSTER-P X HOUSE TR PP TM TC TL TD TE HH1T HH2T HH3T HH4T HH5T HH6T

HOLSTEIN NASIS: 80FFWER **BETA CASEIN: A2A2**

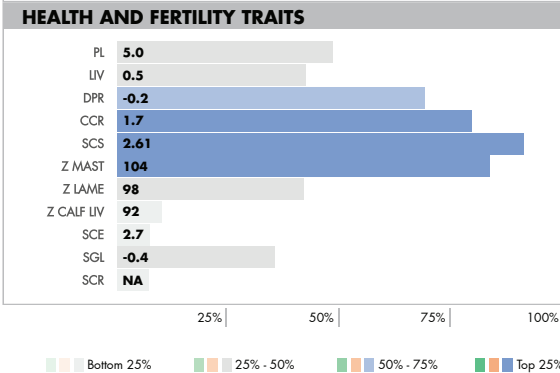
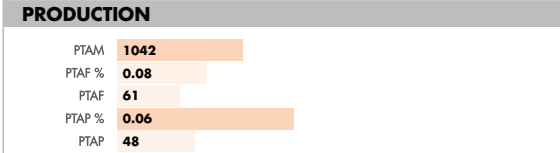
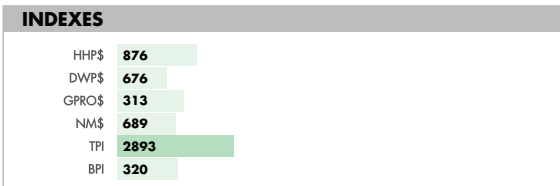
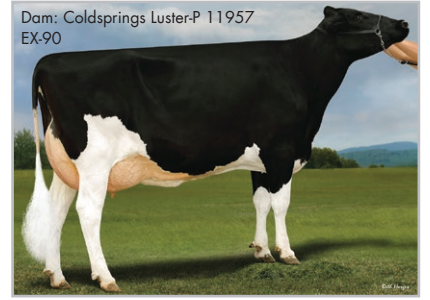
\$30 RRP \$25 SPECIAL \$60 SEXED \$50 SEXED SPECIAL

BPI: 320 OT: 101 MS: 103

MILKING SPEED: 101 TEMP: 101

DAM: COLDSPRINGS LUSTER-P 11957 EX-90
3-06 3X 305D 16284 KGM 4.6% 744 KGF 3.5% 568 KGP

MGD: COLDSPRINGS HOUSE 10757 VG-85
2-10 3X 365D 15672 KGM 3.6% 566 KGF 3.2% 507 KGP



PHYSICAL TRAIT EVALUATION

CDCB/HA Genetic Eval. 12-24
0 dtrs. 0 herds
79% Rel.

PTAT: 2.61	UDC: 2.08	FLC: 1.42	TPI: 2893
Stature	Short	2.26	Tall
Strength	Frail	1.45	Strong
Body Depth	Shallow	1.27	Deep
Dairy Form	Tight Ribbed	1.04	Open Ribbed
Rump Width	Narrow	2.35	Wide
Rump Angle	High Pins	-0.57	Sloped
Rear Leg (side view)	Posty	1.01	Sickled
Rear Leg (rear view)	Hock-in	2.06	Straight
Foot Angle	Low Angle	1.61	Steep Angle
Feet & Leg Score	Low	1.76	High
Fore Udder	Loose	3.14	Strong
Rear Udder Height	Low	2.59	High
Rear Udder Width	Narrow	2.46	Wide
Udder Cleft	Weak	1.36	Strong
Udder Depth	Deep	2.83	Shallow
Front Teat Placement	Wide	0.45	Close
Rear Teat Placement	Wide	0.70	Close
Teat Length	Short	0.82	Long

12-24
GUSA CDCB,
IB/MACE,
CDN and Zoetis
Genomic Eval.

PACE



250HO16497 SIEMERS CWAY PACE 36945-ET **A2A2**

CONWAY X ZASBERILLA X DELTA-LAMBDA TR TP TC TY TV TL TD TE HH1T HH2T HH3T HH4T HH5T HH6T

HOLSTEIN NASIS: 80FFVC8 **BETA CASEIN: A2A2**

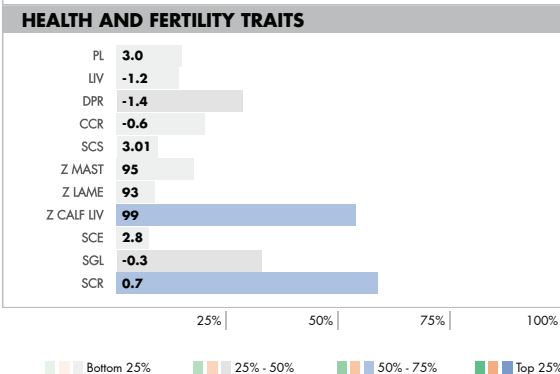
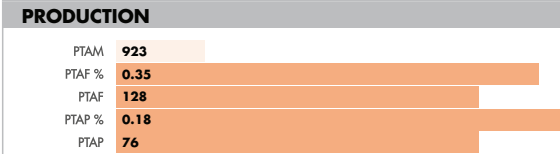
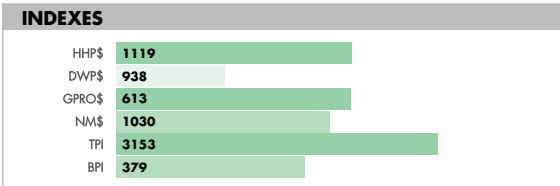
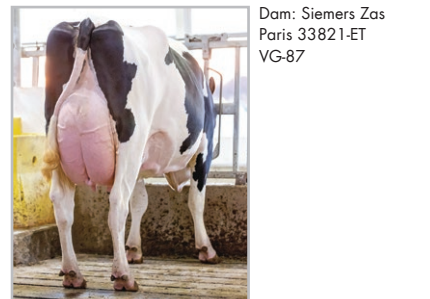
\$38 RRP \$22 SPECIAL \$70 SEXED \$50 SEXED SPECIAL \$85 4M SEXED \$55 4M SEXED SPECIAL

BPI: 379 OT: 100 MS: 104

MILKING SPEED: 100 TEMP: 100

DAM: SIEMERS ZAS PARIS 33821-ET VG-87
2-01 3X 365D 21165 KGM 4.6% 966 KGF 3.2% 677 KGP

MGD: SIEMERS LMDA PARIS 27856-ET EX-91
3-05 2X 365D 17500 KGM 4.1% 716 KGF 3.5% 618 KGP



PHYSICAL TRAIT EVALUATION

CDCB/HA Genetic Eval. 12-24
0 dtrs. 0 herds
82% Rel.

PTAT: 2.44	UDC: 2.04	FLC: 1.11	TPI: 3153
Stature	Short	1.68	Tall
Strength	Frail	0.87	Strong
Body Depth	Shallow	1.53	Deep
Dairy Form	Tight Ribbed	2.87	Open Ribbed
Rump Width	Narrow	1.86	Wide
Rump Angle	High Pins	0.35	Sloped
Rear Leg (side view)	Posty	1.50	Sickled
Rear Leg (rear view)	Hock-in	1.37	Straight
Foot Angle	Low Angle	0.91	Steep Angle
Feet & Leg Score	Low	1.48	High
Fore Udder	Loose	2.37	Strong
Rear Udder Height	Low	2.96	High
Rear Udder Width	Narrow	3.52	Wide
Udder Cleft	Weak	1.24	Strong
Udder Depth	Deep	0.93	Shallow
Front Teat Placement	Wide	1.45	Close
Rear Teat Placement	Wide	1.54	Close
Teat Length	Short	-0.33	Long

12-24
GUSA CDCB,
IB/MACE,
CDN and Zoetis
Genomic Eval.

ROBINSON



AYRSHIRE

9AY00149 SPRINGHILL PALMYRA ROBINSON

KINGSIRE X LOCHINVAR X BERKELY *TF AMF AH1T AH2T AHCT

AYRSHIRE NASIS: 80AYV08 BETA CASEIN: A1A2

\$26 RRP \$22 SPECIAL \$60 SEXED \$50 SEXED SPECIAL

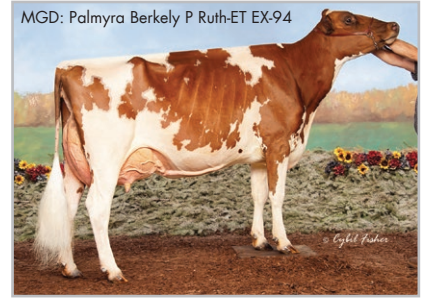
BPI: -103 OT: 103 MS: 101

MILKING SPEED: 98

DAM: PALMYRA LOCHINVAR B RUTH

MGD: PALMYRA BERKELY P RUTH-ET EX-94

3-10 2X 323D 14542 KGM 3.9% 570 KGF 3.0% 435 KGP



INDEXES

NM\$	-59
TPI	435
BPI	-103

PRODUCTION

PTAM	161
PTAF %	-0.04
PTAF	0
PTAP %	0.02
PTAP	9

HEALTH AND FERTILITY TRAITS

PL	-0.2
LIV	-1.1
DPR	-2.1
CCR	-3.3
SCS	3.22
SGL	0.5
SCR	NA



PHYSICAL TRAIT EVALUATION

CDCB/ABA Genetic Eval. 12-24

0 dtrs. 0 herds

46% Rel.

PTAT: 0.80 PTI: 435

Stature	Short	3.70	Tall
Strength	Frail	1.00	Strong
Body Depth	Shallow	0.30	Deep
Dairy Form	Tight Ribbed	0.50	Open Ribbed
Rump Width	Narrow	2.40	Wide
Rump Angle	High Pins	-0.40	Sloped
Rear Leg (side view)	Posty	-0.70	Sickled
Foot Angle	Low Angle	1.20	Steep Angle
Fore Udder	Loose	1.70	Strong
Rear Udder Height	Low	1.20	High
Rear Udder Width	Narrow	0.80	Wide
Udder Cleft	Weak	1.30	Strong
Udder Depth	Deep	2.10	Shallow
Front Teat Placement	Wide	0.60	Close
Teat Length	Short	0.90	Long



12-24
GUSA CDCB,
IB/MACE,
CDN and Zoetis
Genomic Eval.

DETERMINATION



BROWN SWISS

9BS00952 EDGE VIEW C DETERMINATION ETV

COLLAPS X THUNDER X AGENDA TM TW TD BHPT BH2T BHMT BHWV BH14T BHDV

BROWN SWISS NASIS: 80SBW12 BETA CASEIN: A1A1

\$28 RRP \$25 SPECIAL \$65 SEXED \$55 SEXED SPECIAL

DAM: CUTTING EDGE T DELILAH EX-95

6-05 2X 365D 14864 KGM 4.7% 705 KGF 3.6% 531 KGP

MGD: TOWPATH AGENDA DANCER EX-92

7-02 2X 365D 10396 KGM 4.5% 466 KGF 3.9% 403 KGP



INDEXES

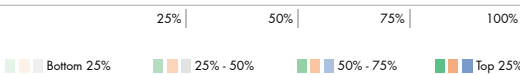
NM\$	204
TPI	63

PRODUCTION

PTAM	384
PTAF %	-0.06
PTAF	4
PTAP %	-0.02
PTAP	9

HEALTH AND FERTILITY TRAITS

PL	2.5
LIV	2.5
DPR	0.2
CCR	-0.7
SCS	3.09
SCE	2.9
SGL	-0.5
SCR	NA



PHYSICAL TRAIT EVALUATION

CDCB/BSBA Genetic Eval. 12-24

0 dtrs. 0 herds

67% Rel.

PTAT: 0.70 UDC: 1.22 PTI: 63

Stature	Short	0.50	Tall
Strength	Frail	-0.20	Strong
Body Depth	Shallow	-0.50	Deep
Dairy Form	Tight Ribbed	0.80	Open Ribbed
Rump Width	Narrow	0.60	Wide
Rump Angle	High Pins	-0.10	Sloped
Rear Leg (side view)	Posty	-0.10	Sickled
Rear Leg (rear view)	Hock-in	0.30	Straight
Foot Angle	Low Angle	0.40	Steep Angle
Fore Udder	Loose	1.00	Strong
Rear Udder Height	Low	1.50	High
Rear Udder Width	Narrow	1.30	Wide
Udder Cleft	Weak	0.60	Strong
Udder Depth	Deep	1.20	Shallow
Front Teat Placement	Wide	0.70	Close
Rear Teat Placement	Wide	0.80	Close
Teat Length	Short	-2.60	Long



12-24
GUSA CDCB,
IB/MACE,
CDN and Zoetis
Genomic Eval.

BERT



187JE05751 **BROOKBORA BERT A2A2**

ROULETTE X VANAHLEM X ACTION JH1C JHPF JNS-TF

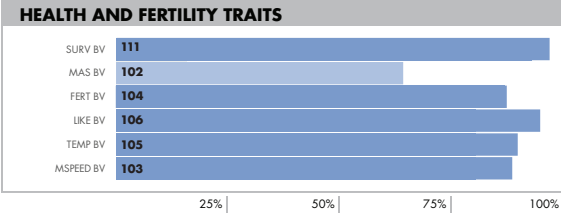
JERSEY NASIS: 30JJW03 **BETA CASEIN: A2A2**

\$30 RRP **\$26 SPECIAL**

BPI: 380 OT: 112 MS: 116

MILKING SPEED: 103 TEMP: 105

DAM: ASPIRE VANAHLEM CHARO EX 92
 MGD: TOPSHELF ACTION CHARO EX90 STP6
 MGGD: TOPSHELF B CHARO EX91 (BERETTA)
 MGGGD: BLAXLAND JUDE CHARO EX90



12-24 AUS GENETIC EVAL 0 dtrs. 0 herds

BPI/REL.	380/68
SI	791
ASI	149
MILK	693
FAT %	-0.37%
FAT	18
PROTEIN %	0.03%
PROTEIN	25
MILKING SPEED	103
TEMPERAMENT	105
LIKABILITY	106
FEED SAVED	-27
HEAT TOLERANCE	102
SURVIVAL	111
CELL COUNT	116
MASTITIS	102
DTR. FERTILITY	104
CALVING EASE	NA
GESTATION	6

12-24 PHYSICAL TRAIT EVALUATION

OVERALL TYPE	112
MAMMARY	116
STATURE	102
CHEST WIDTH	101
BODY DEPTH	103
ANGULARITY	108
PIN SET	100
PIN WIDTH	108
REAR LEG SET	99
REAR LEG REAR VIEW	101
FOOT ANGLE	100
FORE ATTACHMENT	107
REAR ATTACHMENT HEIGHT	110
REAR ATTACHMENT WIDTH	110
CENTRE LIGAMENT	112
UDDER DEPTH	105
TEAT PLACE FORE	111
TEAT PLACE REAR	111
TEAT LENGTH	98

DataVet QR code

USDA-CDCB Genomic Eval. 12-24 AUS and CDN Genomic Eval. 12-24 Zoetis 12-24

“He’s the first purchase of a bull by WWS Australia, so we thought we’d make it a special one!”

JX CAPER {5}-P



614JE02294 **JX PRIMUS MONSTER CAPER {5}-P-ET A2A2**

MONSTER {6}-P X ENZO {3} X LEMONHEAD JNS-TF JH1F JHPF

JERSEY NASIS: 80JJW39 **BETA CASEIN: A2A2**

\$30 RRP **\$26 SPECIAL \$70 SEXED \$60 SEXED SPECIAL**

BPI: 251 OT: 98 MS: 99

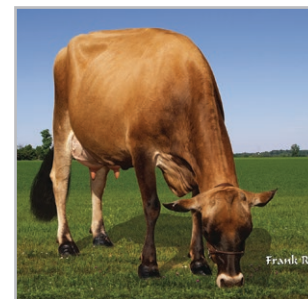
MILKING SPEED: 100 TEMP: 102

DAM: JX PRIMUS ENZO CHARLIZE 668 {4}-ET VG-80

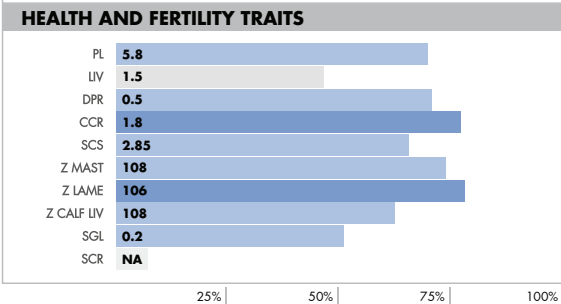
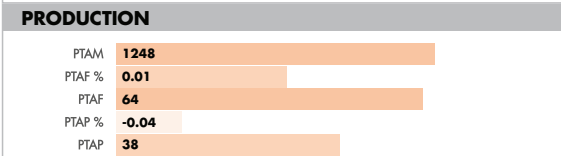
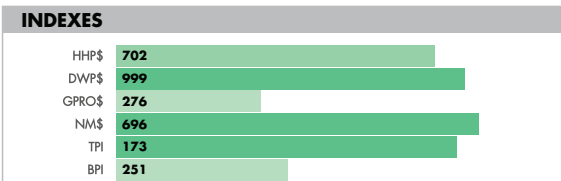
MGD: RIVER VALLEY LEMONHEAD CARNIVALET



MGGD: Goff Pharoah Circus Act-ET EX-90



Dam: JX Primus Enzo Charlize 668 {4}-ET VG-80



PHYSICAL TRAIT EVALUATION CDCB/AJCA Genetic Eval. 12-24 0 dtrs. 0 herds 79% Rel.

Stature	Short	0.60	Tall
Strength	Frail	0.20	Strong
Dairy Form	Tight Ribbed	0.60	Open Ribbed
Rump Width	Narrow	-0.10	Wide
Rump Angle	High Pins	-0.60	Sloped
Rear Leg (side view)	Posty	0.20	Sickled
Foot Angle	Low Angle	-0.20	Steep Angle
Fore Udder	Loose	1.80	Strong
Rear Udder Height	Low	0.90	High
Rear Udder Width	Narrow	0.40	Wide
Udder Cleft	Weak	0.20	Strong
Udder Depth	Deep	1.40	Shallow
Front Teat Placement	Wide	0.90	Close
Rear Teat (rear view)	Wide	0.20	Close
Rear Teat (side view)	Close	0.10	Back
Teat Length	Short	0.60	Long

DataVet QR code

Accelerated Genetics logo

12-24 GUSA CDCB, IB/MACE, CDN and Zoetis Genomic Eval.

14JE01921 **JX PRIMUS THRASHER CRISPIN {5}-ET A2A2**

JX THRASHER {6} X JX FOURNETTE {3} X LEMONHEAD JNS-TF JH1F JHPF

DAM: JX PRIMUS FOURNETTE CERYS 560 VG-84
4-10 3X 305D 11703 KGM 5.0% 588 KGF 3.7% 434 KGP
MGD: RIVER VALLEY LEMONHEAD CARNIVALET

JERSEY NASIS: 80JJT75 BETA CASEIN: A2A2

\$32 RRP \$28 SPECIAL \$65 SEXED \$60 SEXED SPECIAL

BPI: 312 OT: 101 MS: 99

MILKING SPEED: 101 TEMP: 104

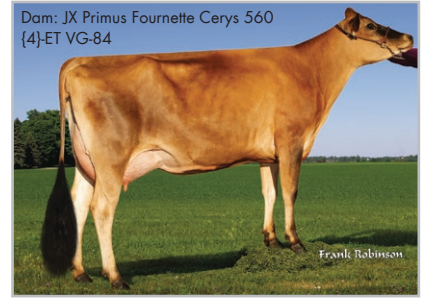
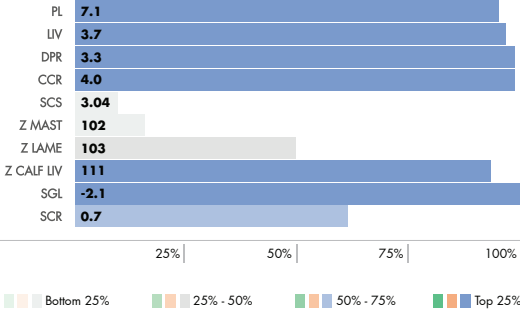
INDEXES



PRODUCTION



HEALTH AND FERTILITY TRAITS



PHYSICAL TRAIT EVALUATION CDCB/AJCA Genetic Eval. 12-24

19 dtrs. 5 herds 86% Rel.

PTAT: 0.80 JUL: 15.80 JPI: 189

Stature	Short	1.80	Tall
Strength	Frail	0.70	Strong
Dairy Form	Tight Ribbed	0.60	Open Ribbed
Rump Width	Narrow	0.40	Wide
Rump Angle	High Pins	0.70	Sloped
Rear Leg (side view)	Posty	0.40	Sickled
Foot Angle	Low Angle	0.10	Steep Angle
Fore Udder	Loose	1.20	Strong
Rear Udder Height	Low	0.60	High
Rear Udder Width	Narrow	0.30	Wide
Udder Cleft	Weak	0.20	Strong
Udder Depth	Deep	1.20	Shallow
Front Teat Placement	Wide	0.10	Close
Rear Teat (rear view)	Wide	0.00	Close
Rear Teat (side view)	Close	-0.20	Back
Teat Length	Short	0.40	Long



12-24 GUSA CDCB, IB/MACE, CDN and Zoetis Genomic Eval.

UNANIMOUS

6GU00139 **UNOS JD UNANIMOUS-ETV A2A2**

JAMES DEAN X DIX LEE TILLER KOJACK X ARROW HEAD ROSENE'S D RODNEY

GUERNSEY NASIS: 80GGV20 BETA CASEIN: A2A2

\$38 RRP \$32 SPECIAL \$70 SEXED \$60 SEXED SPECIAL

DAM: SPRINGHILL KOJACK UNO-ETV EX-95

6-09 2X 365D 16268 KGM 5.3% 858 KGF 3.4% 553 KGP

MGD: CAMPBELLS RODNEYS UNIFY EX-94

10-10 2X 365D 9739 KGM 3.9% 385 KGF 3.5% 338 KGP

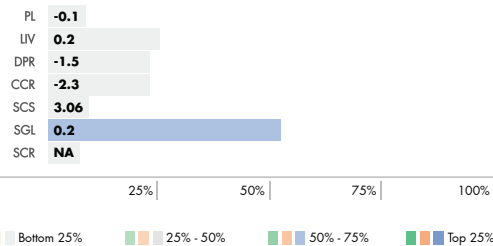
INDEXES



PRODUCTION



HEALTH AND FERTILITY TRAITS



PHYSICAL TRAIT EVALUATION CDCB/AGA Genetic Eval. 12-24

0 dtrs. 0 herds 56% Rel.

PTAT: 1.40 UDC: 1.60 FLC: 2.10 PTI: 63

Stature	Short	4.10	Tall
Strength	Frail	2.30	Strong
Body Depth	Shallow	3.20	Deep
Dairy Form	Tight Ribbed	1.50	Open Ribbed
Rump Width	Narrow	2.20	Wide
Rump Angle	High Pins	1.20	Sloped
Rear Leg (side view)	Posty	0.30	Sickled
Rear Leg (rear view)	Hock-in	0.80	Straight
Foot Angle	Low Angle	0.80	Steep Angle
Fore Udder	Loose	2.00	Strong
Rear Udder Height	Low	1.50	High
Rear Udder Width	Narrow	1.20	Wide
Udder Cleft	Weak	0.90	Strong
Udder Depth	Deep	1.80	Shallow
Front Teat Placement	Wide	1.20	Close
Teat Length	Short	0.90	Long



12-24 GUSA CDCB, IB/MACE, CDN and Zoetis Genomic Eval.

CONFAY



458 BPI

250HO17433 SANDY-VALLEY CONFAY-ET **A2A2**

EASTON X PERFECT X LEGACY TR TP TM TC TL TD TE HH1T HH2T HH3T HH4T HH5T HH6T

HOLSTEIN NASIS: TBA BETA CASEIN: A2A2

\$50 RRP \$80 SEXED

BPI: 458 OT: 103 MS: 100

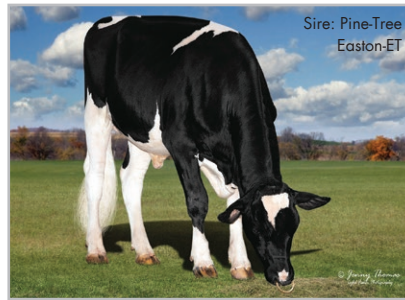
MILKING SPEED: 102 TEMP: 103

DAM: SANDY-VALLEY CONFUSION VG-85

1-10 3X 327D 13667 KGM 5.0% 686 KGF 3.6% 487 KGP

MGD: SANDY-VALLEY CONFUZZLE-ET VG-87

4-01 3X 365D 16797 KGM 5.2% 874 KGF 3.7% 619 KGP



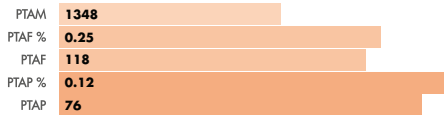
Sire: Pine-Tree Easton-ET

4th dam: Sandy-Valley Md Pleasure-ET EX-91

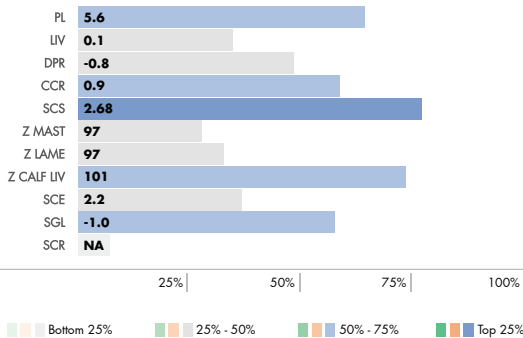
INDEXES



PRODUCTION



HEALTH AND FERTILITY TRAITS



PHYSICAL TRAIT EVALUATION

CDCB/HA Genetic Eval. 12-24

PTAT: 1.99 UDC: 1.98 FLC: 0.71 TPI: 3230

0 dtrs. 0 herds 79% Rel.

Stature	Short	0.90	Tall
Strength	Frail	0.79	Strong
Body Depth	Shallow	0.78	Deep
Dairy Form	Tight Ribbed	1.60	Open Ribbed
Rump Width	Narrow	1.86	Wide
Rump Angle	High Pins	0.33	Sloped
Rear Leg (side view)	Posty	0.19	Sickled
Rear Leg (rear view)	Hock-in	1.18	Straight
Foot Angle	Low Angle	0.61	Steep Angle
Feet & Leg Score	Low	0.77	High
Fore Udder	Loose	2.20	Strong
Rear Udder Height	Low	2.61	High
Rear Udder Width	Narrow	2.74	Wide
Udder Cleft	Weak	1.11	Strong
Udder Depth	Deep	1.25	Shallow
Front Teat Placement	Wide	0.89	Close
Rear Teat Placement	Wide	1.12	Close
Teat Length	Short	0.14	Long



12-24 GUSA CDCB, IB/MACE, CDN and Zoetis Genomic Eval.

DROP N HOT



7HO17379 SUNQUEST DROP N HOT-ET **A2A2**

DROPBOX X PERFECT X DOC TR TP TM TC TL TD TE HH1T HH2T HH3T HH4T HH5T HH6T

HOLSTEIN NASIS: 80FFWGD BETA CASEIN: A2A2

\$40 RRP \$75 SEXED

BPI: 345 OT: 102 MS: 105

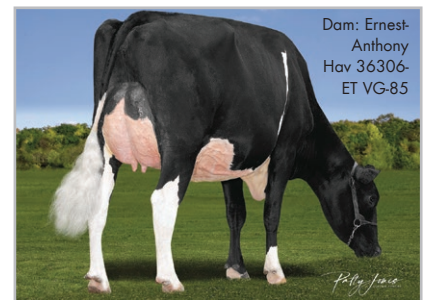
MILKING SPEED: 102 TEMP: 102

DAM: ERNEST-ANTHONY HAV 36306-ET VG-85

2-02 3X 255D 8337 KGM 4.3% 360 KGF 3.1% 261 KGP

MGD: S-S-I DOC HAVE NOT 8783-ET EX-92

3-05 2X 305D 15141 KGM 4.7% 713 KGF 3.4% 513 KGP



Dam: Ernest-Anthony Hav 36306-ET VG-85

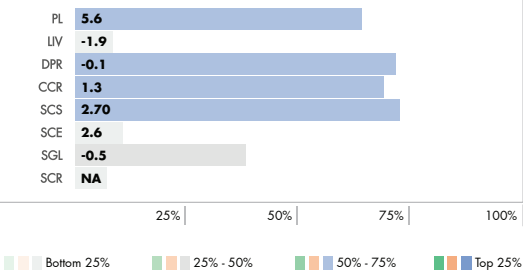
INDEXES



PRODUCTION



HEALTH AND FERTILITY TRAITS



PHYSICAL TRAIT EVALUATION

CDCB/HA Genetic Eval. 12-24

PTAT: 2.98 UDC: 2.80 FLC: 1.66 TPI: 3097

0 dtrs. 0 herds 78% Rel.

Stature	Short	1.77	Tall
Strength	Frail	1.00	Strong
Body Depth	Shallow	1.07	Deep
Dairy Form	Tight Ribbed	1.86	Open Ribbed
Rump Width	Narrow	1.86	Wide
Rump Angle	High Pins	-0.64	Sloped
Rear Leg (side view)	Posty	0.64	Sickled
Rear Leg (rear view)	Hock-in	1.93	Straight
Foot Angle	Low Angle	1.86	Steep Angle
Feet & Leg Score	Low	1.92	High
Fore Udder	Loose	3.29	Strong
Rear Udder Height	Low	3.71	High
Rear Udder Width	Narrow	3.75	Wide
Udder Cleft	Weak	1.88	Strong
Udder Depth	Deep	2.17	Shallow
Front Teat Placement	Wide	1.36	Close
Rear Teat Placement	Wide	1.86	Close
Teat Length	Short	-0.16	Long



12-24 GUSA CDCB, IB/MACE, CDN and Zoetis Genomic Eval.

HINGE



423 BPI

7HO17700 HAVEITALL BLAKELY HINGE-ET **A2A2**

BLAKELY X PERFECT X DOC TR TP TM TC TL TD TE HH1T HH2T HH3T HH4T HH5T HH6T

HOLSTEIN NASIS: TBA BETA CASEIN: A2A2

\$40 RRP \$80 SEXED

BPI: 423 OT: 101 MS: 105

MILKING SPEED: 100 TEMP: 103

DAM: DUCKETT PERFECT HOLLY-ET VG-86

2-00 2X 365D 11453 KGM 4.5% 513 KGF 3.3% 377 KGP

MGD: S-SI DOC HAVE NOT 8784-ET EX-96

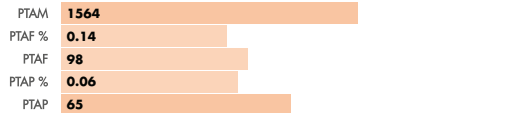
4-05 2X 320D 16180 KGM 3.9% 637 KGF 3.1% 497 KGP



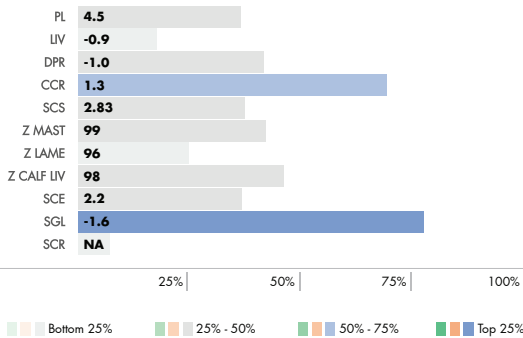
INDEXES



PRODUCTION



HEALTH AND FERTILITY TRAITS



PHYSICAL TRAIT EVALUATION

CDCB/HA Genetic Eval. 12-24

0 dtrs. 0 herds
79% Rel.

PTAT: 3.31 UDC: 3.09 FLC: 1.51 TPI: 3170

Stature	Short	2.48	Tall
Strength	Frail	1.20	Strong
Body Depth	Shallow	1.41	Deep
Dairy Form	Tight Ribbed	2.41	Open Ribbed
Rump Width	Narrow	2.65	Wide
Rump Angle	High Pins	0.88	Sloped
Rear Leg (side view)	Posty	-0.13	Sicklied
Rear Leg (rear view)	Hock-in	2.09	Straight
Foot Angle	Low Angle	1.90	Steep Angle
Feet & Leg Score	Low	1.87	High
Fore Udder	Loose	3.43	Strong
Rear Udder Height	Low	4.24	High
Rear Udder Width	Narrow	4.38	Wide
Udder Cleft	Weak	1.95	Strong
Udder Depth	Deep	2.75	Shallow
Front Teat Placement	Wide	1.40	Close
Rear Teat Placement	Wide	1.77	Close
Teat Length	Short	-0.07	Long



12-24
GUSA CDCB,
IB/MACE,
CDN and Zoetis
Genomic Eval.

PALDWYN*RC



250HO17567 SIEMERS HULU PALDWYN-ET **A2A2**

HULU*RC X DELTA-LAMBDA X DENVER RC TP TM TC TL TD TE HH1T HH2T HH3T HH4T HH5T HH6T

HOLSTEIN NASIS: 80FFWGE BETA CASEIN: A2A2

\$34 RRP \$70 SEXED

BPI: 342 OT: 107 MS: 114

MILKING SPEED: 101 TEMP: 102

DAM: SIEMERS LMDA PARIS 27856-ET EX-91

3-05 2X 365D 17500 KGM 4.1% 716 KGF 3.5% 618 KGP

MGD: SIEMERS DENVER PARIS-ET EX-91

4-05 2X 339D 14728 KGM 4.6% 671 KGF 3.4% 501 KGP



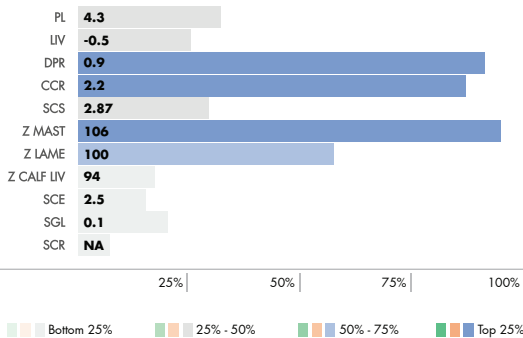
INDEXES



PRODUCTION



HEALTH AND FERTILITY TRAITS



PHYSICAL TRAIT EVALUATION

CDCB/HA Genetic Eval. 12-24

0 dtrs. 0 herds
80% Rel.

PTAT: 3.75 UDC: 3.70 FLC: 1.87 TPI: 2997

Stature	Short	4.00	Tall
Strength	Frail	1.93	Strong
Body Depth	Shallow	2.46	Deep
Dairy Form	Tight Ribbed	3.10	Open Ribbed
Rump Width	Narrow	3.72	Wide
Rump Angle	High Pins	1.03	Sloped
Rear Leg (side view)	Posty	-0.27	Sicklied
Rear Leg (rear view)	Hock-in	2.86	Straight
Foot Angle	Low Angle	3.32	Steep Angle
Feet & Leg Score	Low	2.44	High
Fore Udder	Loose	4.22	Strong
Rear Udder Height	Low	5.34	High
Rear Udder Width	Narrow	5.24	Wide
Udder Cleft	Weak	3.17	Strong
Udder Depth	Deep	3.42	Shallow
Front Teat Placement	Wide	3.02	Close
Rear Teat Placement	Wide	3.35	Close
Teat Length	Short	0.10	Long



12-24
GUSA CDCB,
IB/MACE,
CDN and Zoetis
Genomic Eval.

PARJET



540 BPI

14HO17557 SIEMERS PARJET-ET **A2A2**

FELIX X DONNELLY X HELIX TR TP TM TC TL TD TE HH1T HH2T HH3T HH4T HH5T HH6T

DAM: SIEMERS DNLY PARIS 37332-ET GP-81

MGD: SIEMERS HLX PARIS 34342-ET VG-87

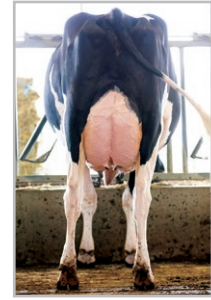
1-11 3X 312D 15526 KGM 4.6% 719 KGF 3.3% 515 KGP

HOLSTEIN NASIS: TBA BETA CASEIN: A2A2

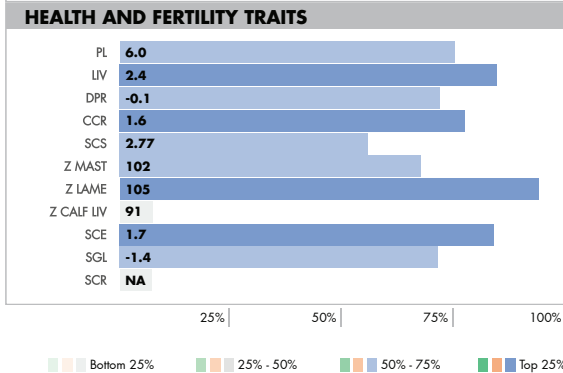
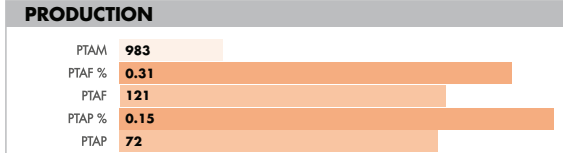
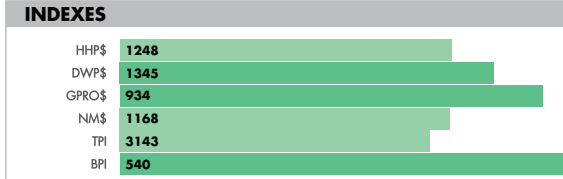
\$30 RRP \$65 SEXED

BPI: 540 OT: 95 MS: 98

MILKING SPEED: 102 TEMP: 101



MGGD: Siemers Lmda Paris 27856-ET EX-91



PHYSICAL TRAIT EVALUATION

CDCB/HA Genetic Eval. 12-24

0 dtrs. 0 herds

78% Rel.

PTAT: 1.15 UDC: 1.22 FLC: -0.15 TPI: 3143

Stature	Short	0.27	Tall
Strength	Frail	0.03	Strong
Body Depth	Shallow	-0.09	Deep
Dairy Form	Tight Ribbed	0.85	Open Ribbed
Rump Width	Narrow	0.79	Wide
Rump Angle	High Pins	-0.07	Sloped
Rear Leg (side view)	Posty	0.02	Sickled
Rear Leg (rear view)	Hock-in	-0.09	Straight
Foot Angle	Low Angle	0.30	Steep Angle
Feet & Leg Score	Low	-0.10	High
Fore Udder	Loose	1.73	Strong
Rear Udder Height	Low	1.12	High
Rear Udder Width	Narrow	1.72	Wide
Udder Cleft	Weak	0.16	Strong
Udder Depth	Deep	1.28	Shallow
Front Teat Placement	Wide	0.75	Close
Rear Teat Placement	Wide	0.37	Close
Teat Length	Short	-1.25	Long



AcceleratedGenetics



12-24 GUSA CDCB, IB/MACE, CDN and Zoetis Genomic Eval.

SENER



530 BPI

14HO17541 PEN-COL SENTER-ET **A2A2**

RYKER X GAMEDAY X LEGACY TR TP TM TC TL TD TE HH1T HH2T HH3T HH4T HH5T HH6T

DAM: PEN-COL GAMEDAY LOYALTY-ET VG-85

MGD: CHERRYPENCOL LUCILLE-ET VG-85

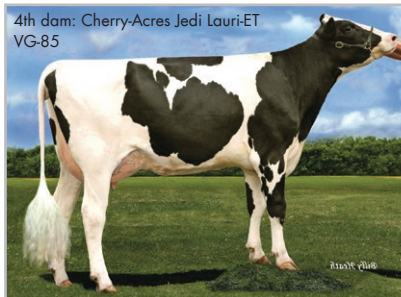
2-08 2X 365D 12324 KGM 4.4% 546 KGF 3.4% 422 KGP

HOLSTEIN NASIS: TBA BETA CASEIN: A2A2

\$30 RRP \$65 SEXED

BPI: 530 OT: 97 MS: 99

MILKING SPEED: 102 TEMP: 99



PHYSICAL TRAIT EVALUATION

CDCB/HA Genetic Eval. 12-24

0 dtrs. 0 herds

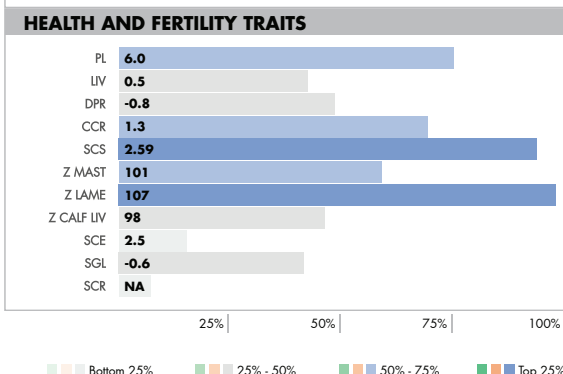
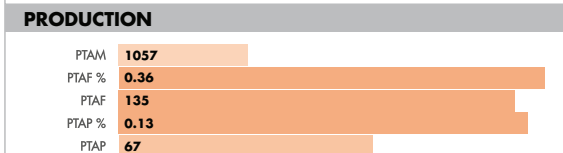
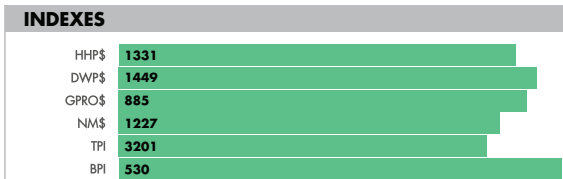
79% Rel.

PTAT: 1.09 UDC: 1.57 FLC: -0.15 TPI: 3201

Stature	Short	0.63	Tall
Strength	Frail	-0.13	Strong
Body Depth	Shallow	-0.36	Deep
Dairy Form	Tight Ribbed	0.64	Open Ribbed
Rump Width	Narrow	0.45	Wide
Rump Angle	High Pins	0.29	Sloped
Rear Leg (side view)	Posty	0.08	Sickled
Rear Leg (rear view)	Hock-in	-0.18	Straight
Foot Angle	Low Angle	0.29	Steep Angle
Feet & Leg Score	Low	0.02	High
Fore Udder	Loose	1.82	Strong
Rear Udder Height	Low	2.10	High
Rear Udder Width	Narrow	1.92	Wide
Udder Cleft	Weak	0.29	Strong
Udder Depth	Deep	1.33	Shallow
Front Teat Placement	Wide	0.98	Close
Rear Teat Placement	Wide	0.82	Close
Teat Length	Short	-0.56	Long



12-24 GUSA CDCB, IB/MACE, CDN and Zoetis Genomic Eval.



SHEEPSTER



417 BPI

7HO16276 **OCD TROOPER SHEEPSTER-ET**

TROOPER X ACURA X RESOLVE TR TP TC TY TV TL TD TE HH1T HH2T HH3T HH4T HH5T HH6T

HOLSTEIN NASIS: 80FFUJW BETA CASEIN: A1A2

\$45 RRP \$80 SEXED

BPI: 417 OT: 99 MS: 97

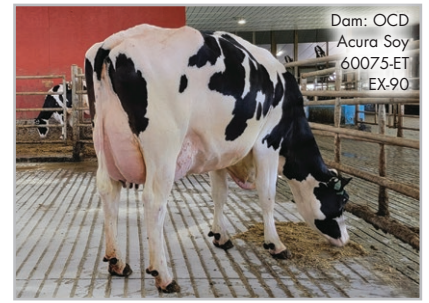
MILKING SPEED: 103 TEMP: 101

DAM: OCD ACURA SOY 60075-ET EX-90

3-05 3X 301D 16583 KGM 4.3% 721 KGF 3.3% 551 KGP

MGD: OCD RESOLVE SOY 44814-ET VG-85

3-02 3X 316D 14016 KGM 3.9% 546 KGF 3.1% 437 KGP



Dam: OCD Acura Soy 60075-ET EX-90

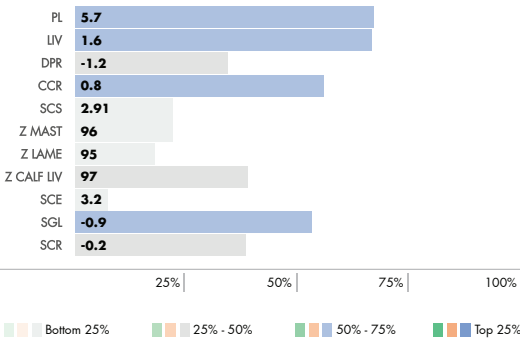
INDEXES



PRODUCTION



HEALTH AND FERTILITY TRAITS



PHYSICAL TRAIT EVALUATION

CDCB/HA Genetic Eval. 12-24

0 dtrs. 0 herds
81% Rel.

PTAT: 1.52 UDC: 1.15 FLC: 1.20 TPI: 3280

Stature	Short	0.89	Tall
Strength	Frail	0.68	Strong
Body Depth	Shallow	0.29	Deep
Dairy Form	Tight Ribbed	0.63	Open Ribbed
Rump Width	Narrow	0.74	Wide
Rump Angle	High Pins	0.67	Sloped
Rear Leg (side view)	Posty	-0.51	Sickled
Rear Leg (rear view)	Hock-in	1.55	Straight
Foot Angle	Low Angle	1.58	Steep Angle
Feet & Leg Score	Low	1.22	High
Fore Udder	Loose	1.56	Strong
Rear Udder Height	Low	1.39	High
Rear Udder Width	Narrow	1.74	Wide
Udder Cleft	Weak	0.46	Strong
Udder Depth	Deep	1.00	Shallow
Front Teat Placement	Wide	0.50	Close
Rear Teat Placement	Wide	0.47	Close
Teat Length	Short	-0.25	Long



12-24
GUSA CDCB,
IB/MACE,
CDN and Zoetis
Genomic Eval.

TUBMAN



250HO17513 **AURORA TUBMAN-ET** A2A2

SHEEPSTER X PERFECT X RAPID TR TP TM TC TL TD TE HH1T HH2T HH3T HH4T HH5T HH6T

HOLSTEIN NASIS: TBA BETA CASEIN: A2A2

\$40 RRP \$75 SEXED

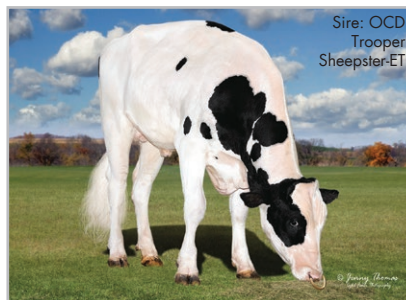
BPI: 322 OT: 99 MS: 100

MILKING SPEED: 102 TEMP: 100

DAM: AURORA PERFECT 23719-ET VG-85

MGD: AURORA RAPID 21849-ET VG-87

1-10 3X 365D 15912 KGM 4.0% 637 KGF 3.2% 516 KGP

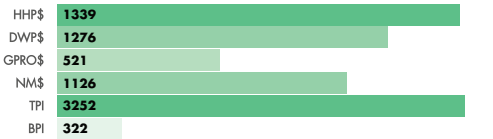


Sire: OCD Trooper Sheepster-ET



Perfect dtr: Jacobs Perfect Brink VG-88

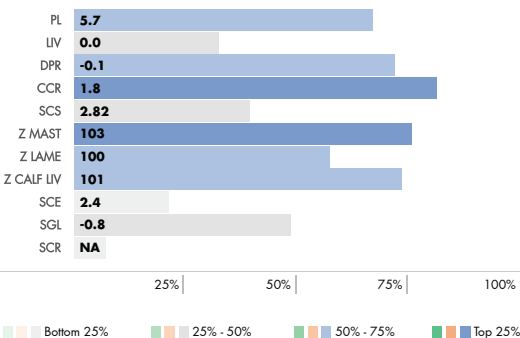
INDEXES



PRODUCTION



HEALTH AND FERTILITY TRAITS



PHYSICAL TRAIT EVALUATION

CDCB/HA Genetic Eval. 12-24

0 dtrs. 0 herds
79% Rel.

PTAT: 2.09 UDC: 1.97 FLC: 1.21 TPI: 3252

Stature	Short	0.84	Tall
Strength	Frail	0.65	Strong
Body Depth	Shallow	0.44	Deep
Dairy Form	Tight Ribbed	1.26	Open Ribbed
Rump Width	Narrow	1.81	Wide
Rump Angle	High Pins	-0.51	Sloped
Rear Leg (side view)	Posty	1.39	Sickled
Rear Leg (rear view)	Hock-in	1.81	Straight
Foot Angle	Low Angle	0.89	Steep Angle
Feet & Leg Score	Low	1.23	High
Fore Udder	Loose	2.22	Strong
Rear Udder Height	Low	2.62	High
Rear Udder Width	Narrow	2.71	Wide
Udder Cleft	Weak	0.80	Strong
Udder Depth	Deep	1.36	Shallow
Front Teat Placement	Wide	0.70	Close
Rear Teat Placement	Wide	0.77	Close
Teat Length	Short	-0.18	Long



12-24
GUSA CDCB,
IB/MACE,
CDN and Zoetis
Genomic Eval.

ALPAZO

14HO17371 WINSTAR ALPAZO-ET

SHEEPSTER X GAMEDAY X THERISK TR TP TM TC TL TD TE HH1T HH2T HH3T HH4T HH5T HH6T

HOLSTEIN NASIS: TBA BETA CASEIN: A1A2

\$56 RRP \$95 SEXED

BPI: 448 OT: 100 MS: 96

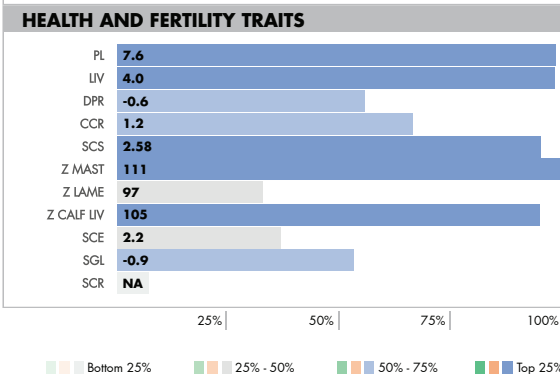
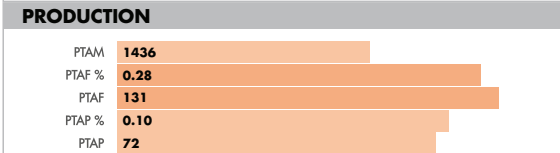
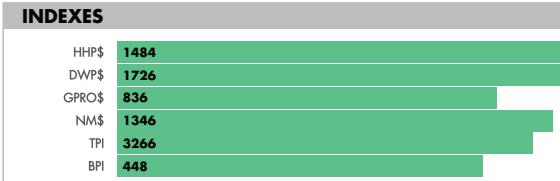
MILKING SPEED: 100 TEMP: 100



DAM: 8401 GP-82

1-10 3X 305D 10646 KGM 4.5% 474 KGF 3.5% 373 KGP

MGD: GENOSOURCE WTR 46532-ET



Gameday dir: Pine-Tree 8418 Gamed 769-ET VG-85

PHYSICAL TRAIT EVALUATION CDCB/HA Genetic Eval. 12-24

PTAT: 1.16 UDC: 1.17 FLC: 0.28 TPI: 3266 0 dtrs. 0 herds 79% Rel.

Stature	Short	0.71	Tall
Strength	Frail	-0.42	Strong
Body Depth	Shallow	-0.20	Deep
Dairy Form	Tight Ribbed	1.33	Open Ribbed
Rump Width	Narrow	0.70	Wide
Rump Angle	High Pins	1.45	Sloped
Rear Leg (side view)	Posty	0.10	Sickled
Rear Leg (rear view)	Hock-in	0.14	Straight
Foot Angle	Low Angle	0.56	Steep Angle
Feet & Leg Score	Low	0.47	High
Fore Udder	Loose	1.39	Strong
Rear Udder Height	Low	1.43	High
Rear Udder Width	Narrow	1.59	Wide
Udder Cleft	Weak	0.45	Strong
Udder Depth	Deep	1.17	Shallow
Front Teat Placement	Wide	0.92	Close
Rear Teat Placement	Wide	0.84	Close
Teat Length	Short	-1.01	Long



12-24 GUSA CDCB, IB/MACE, CDN and Zoetis Genomic Eval.

HABULOUS-P

250HO17298 SIEMERS HABULOUS-P-ET A2A2

HAYK X PERFECT X LUSTER-P TR PC TM TC TL TD TE HH1T HH2T HH3T HH4T HH5T HH6T

HOLSTEIN NASIS: 80FFWDK BETA CASEIN: A2A2

\$60 RRP \$100 SEXED

BPI: 427 OT: 104 MS: 104

MILKING SPEED: 102 TEMP: 103

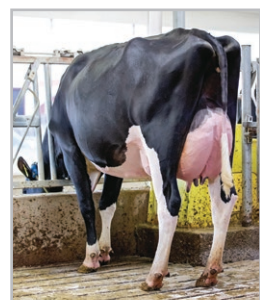
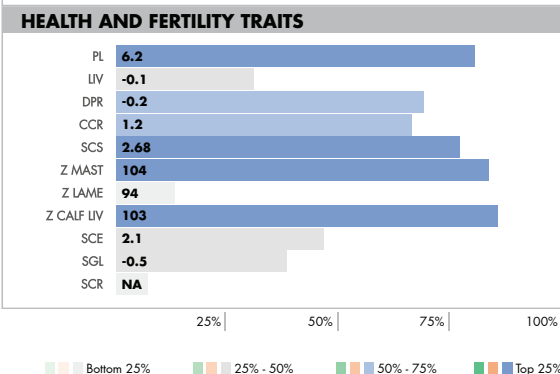
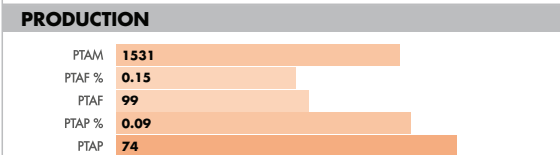
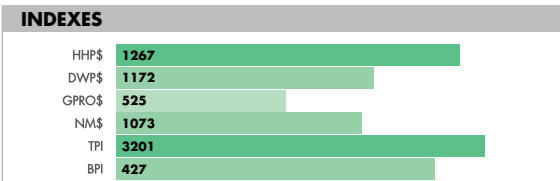


DAM: SIEMERS PAR HANAN 36296-ET EX-90

1-10 3X 303D 13907 KGM 4.4% 619 KGF 3.3% 464 KGP

MGD: SIEMERS LSTR HANAN 33317-ET EX-91

3-03 2X 337D 17867 KGM 3.9% 698 KGF 3.4% 599 KGP



Dam: Siemers Par Hanan 36296-ET EX-90

PHYSICAL TRAIT EVALUATION CDCB/HA Genetic Eval. 12-24

PTAT: 2.62 UDC: 2.05 FLC: 1.17 TPI: 3201 0 dtrs. 0 herds 79% Rel.

Stature	Short	2.11	Tall
Strength	Frail	1.19	Strong
Body Depth	Shallow	1.56	Deep
Dairy Form	Tight Ribbed	2.50	Open Ribbed
Rump Width	Narrow	2.80	Wide
Rump Angle	High Pins	-0.66	Sloped
Rear Leg (side view)	Posty	2.19	Sickled
Rear Leg (rear view)	Hock-in	1.93	Straight
Foot Angle	Low Angle	0.84	Steep Angle
Feet & Leg Score	Low	1.57	High
Fore Udder	Loose	2.48	Strong
Rear Udder Height	Low	2.84	High
Rear Udder Width	Narrow	3.40	Wide
Udder Cleft	Weak	1.99	Strong
Udder Depth	Deep	1.39	Shallow
Front Teat Placement	Wide	1.34	Close
Rear Teat Placement	Wide	2.05	Close
Teat Length	Short	0.66	Long



12-24 GUSA CDCB, IB/MACE, CDN and Zoetis Genomic Eval.

ACETYLENE-RED



744HO17076 LUCK-E ACETYLENE-RED-ET

ROMPEN-RED X DOC X MCGUCCI TP TM TC TY TV TL TD TE HH1T HH2T HH3T HH4T HH5T HH6T

HOLSTEIN NASIS: 80FFUJK BETA CASEIN: A1A2

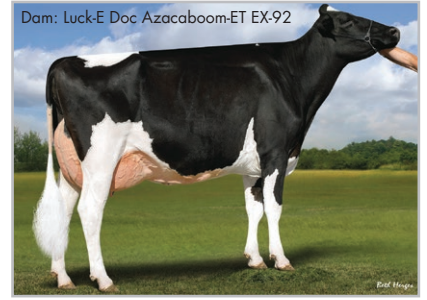
\$36 RRP \$31 SPECIAL \$75 SEXED \$70 SEXED SPECIAL

BPI: 212 OT: 107 MS: 110

MILKING SPEED: 103 TEMP: 102

DAM: LUCK-E DOC AZACABOOM-ET EX-92
3-09 2X 365D 17672 KGM 5.0% 885 KGF 3.3% 583 KGP

MGD: LUCK-E MCGUCCI AFRO-RED-ET EX-94
4-07 2X 365D 16615 KGM 5.6% 932 KGF 3.5% 577 KGP



INDEXES

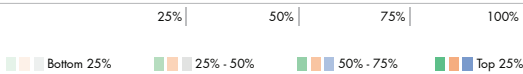
HHP\$ 381
NM\$ 379
TPI 2560
BPI 212

PRODUCTION

PTAM 855
PTAF % 0.08
PTAF 53
PTAP % 0.04
PTAP 38

HEALTH AND FERTILITY TRAITS

PL 1.3
LIV -2.5
DPR -3.5
CCR -4.5
SCS 3.02
SCE 2.2
SGL 0.2
SCR -5.5



PHYSICAL TRAIT EVALUATION

CDCB/HA Genetic Eval. 12-24

0 dtrs. 0 herds
81% Rel.

PTAT: 3.46 UDC: 2.45 FLC: 2.07 TPI: 2560

Trait	Score	Scale
Stature	Short	2.58 Tall
Strength	Frail	1.68 Strong
Body Depth	Shallow	2.03 Deep
Dairy Form	Tight Ribbed	2.30 Open Ribbed
Rump Width	Narrow	1.46 Wide
Rump Angle	High Pins	-0.49 Sloped
Rear Leg (side view)	Posty	0.38 Sickled
Rear Leg (rear view)	Hock-in	2.74 Straight
Foot Angle	Low Angle	2.29 Steep Angle
Feet & Leg Score	Low	2.39 High
Fore Udder	Loose	2.83 Strong
Rear Udder Height	Low	4.00 High
Rear Udder Width	Narrow	3.32 Wide
Udder Cleft	Weak	1.80 Strong
Udder Depth	Deep	2.03 Shallow
Front Teat Placement	Wide	1.75 Close
Rear Teat Placement	Wide	1.76 Close
Teat Length	Short	-0.67 Long



12-24
GUSA CDCB,
IB/MACE,
CDN and Zoetis
Genomic Eval.

ASHER-RED



744HO17546 HILROSE ALTUDE ASHER-RED-ET

ALTITUDE-RED X ADVENT-RED X RUBENS-RC TP TM TC TL TD TE HH1T HH2T HH3T HH4T HH5T HH6T

HOLSTEIN NASIS: TBA BETA CASEIN: A1A2

\$36 RRP \$31 SPECIAL \$75 SEXED \$70 SEXED SPECIAL

BPI: 163 OT: 104 MS: 107

MILKING SPEED: 102 TEMP: 102

DAM: HILROSE ADVENT ANNA-RED-ET EX-95
8-03 2X 365D 20525 KGM 4.9% 1010 KGF 3.2% 647 KGP

MGD: HILROSE RUBENS ASHLYN EX-91
4-06 2X 365D 16007 KGM 3.5% 555 KGF 3.1% 498 KGP



INDEXES

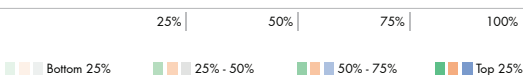
HHP\$ 69
DWP\$ -136
GPRO\$ -58
NM\$ -89
TPI 2114
BPI 163

PRODUCTION

PTAM -1042
PTAF % 0.19
PTAF 6
PTAP % 0.10
PTAP -8

HEALTH AND FERTILITY TRAITS

PL 0.7
LIV -1.8
DPR -0.7
CCR -2.0
SCS 2.91
Z MAST 107
Z IAME 87
Z CALF LIV 100
SCE 3.6
SGL 2.1
SCR NA



PHYSICAL TRAIT EVALUATION

CDCB/HA Genetic Eval. 12-24

0 dtrs. 0 herds
82% Rel.

PTAT: 3.05 UDC: 2.27 FLC: 1.31 TPI: 2114

Trait	Score	Scale
Stature	Short	3.26 Tall
Strength	Frail	1.46 Strong
Body Depth	Shallow	1.73 Deep
Dairy Form	Tight Ribbed	1.14 Open Ribbed
Rump Width	Narrow	2.15 Wide
Rump Angle	High Pins	-0.57 Sloped
Rear Leg (side view)	Posty	0.48 Sickled
Rear Leg (rear view)	Hock-in	1.89 Straight
Foot Angle	Low Angle	1.88 Steep Angle
Feet & Leg Score	Low	1.91 High
Fore Udder	Loose	3.29 Strong
Rear Udder Height	Low	3.68 High
Rear Udder Width	Narrow	2.89 Wide
Udder Cleft	Weak	0.98 Strong
Udder Depth	Deep	2.94 Shallow
Front Teat Placement	Wide	0.30 Close
Rear Teat Placement	Wide	0.28 Close
Teat Length	Short	-0.04 Long



12-24
GUSA CDCB,
IB/MACE,
CDN and Zoetis
Genomic Eval.

FLASH



744HO17043 MR TATOO FLASH-ET **A2A2**

TATOO X SOLOMON X BRAXTON TR TP TM TC TY TV TL TD TE HH1T HH2T HH3T HH4T HH5T HH6T

HOLSTEIN NASIS: 80FFVK5 BETA CASEIN: A2A2

\$38 RRP \$33 SPECIAL \$75 SEXED \$70 SEXED SPECIAL

BPI: 145 OT: 106 MS: 111

MILKING SPEED: 102 TEMP: 103

DAM: OAKFIELD SOLOM FOOTLOOSE-ET EX-97
5-03 2X 300D 11703 KGM 4.2% 487 KGF 3.0% 356 KGP

MGD: DUCKETT-SA BRAXTN FRISCO-ET EX-94
5-01 3X 365D 14851 KGM 3.3% 497 KGF 2.8% 409 KGP

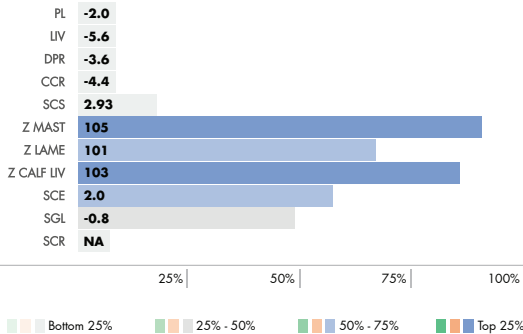
INDEXES

HHP\$	-302
DWP\$	-369
GPRO\$	-572
NM\$	-295
TPI	1851
BPI	145

PRODUCTION

PTAM	-373
PTAF %	0.03
PTAF	-8
PTAP %	-0.02
PTAP	-17

HEALTH AND FERTILITY TRAITS



PHYSICAL TRAIT EVALUATION

CDCB/HA Genetic Eval. 12-24

PTAT: 2.99 UDC: 2.37 FLC: 0.69 TPI: 1851

0 dtrs. 0 herds
81% Rel.

Stature	Short	2.96	Tall
Strength	Frail	1.20	Strong
Body Depth	Shallow	2.15	Deep
Dairy Form	Tight Ribbed	2.64	Open Ribbed
Rump Width	Narrow	3.19	Wide
Rump Angle	High Pins	1.05	Sloped
Rear Leg (side view)	Posty	2.04	Sickled
Rear Leg (rear view)	Hock-in	0.58	Straight
Foot Angle	Low Angle	1.54	Steep Angle
Feet & Leg Score	Low	1.54	High
Fore Udder	Loose	3.56	Strong
Rear Udder Height	Low	2.93	High
Rear Udder Width	Narrow	2.87	Wide
Udder Cleft	Weak	2.76	Strong
Udder Depth	Deep	2.66	Shallow
Front Teat Placement	Wide	1.79	Close
Rear Teat Placement	Wide	2.17	Close
Teat Length	Short	0.41	Long



12-24
GUSA CDCB,
IB/MACE,
CDN and Zoetis
Genomic Eval.

HAZARD-PP



744HO17073 MR LUSTER HAZARD-PP-ET **A2A2**

LUSTER-P X MIRAND X HOTLINE TR PP TM TC TY TV TL TD TE HH1T HH2T HH3T HH4T HH5T HH6T

HOLSTEIN NASIS: TBA BETA CASEIN: A2A2

\$36 RRP \$31 SPECIAL \$75 SEXED \$70 SEXED SPECIAL

BPI: 264 OT: 104 MS: 106

MILKING SPEED: 104 TEMP: 102

DAM: VOGUE MIRAND HANAIEI-P EX-93

MGD: PEAK HAWAII HTLN 80660-ET VG-85
4-09 2X 365D 14251 KGM 4.7% 669 KGF 3.7% 530 KGP

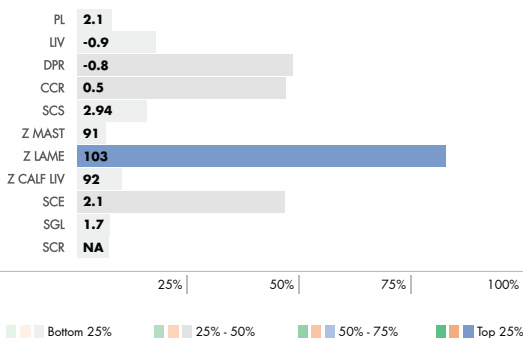
INDEXES

HHP\$	522
DWP\$	351
GPRO\$	-51
NM\$	503
TPI	2610
BPI	264

PRODUCTION

PTAM	1141
PTAF %	0.04
PTAF	55
PTAP %	-0.02
PTAP	31

HEALTH AND FERTILITY TRAITS



PHYSICAL TRAIT EVALUATION

CDCB/HA Genetic Eval. 12-24

PTAT: 2.01 UDC: 1.79 FLC: 1.23 TPI: 2610

0 dtrs. 0 herds
81% Rel.

Stature	Short	1.72	Tall
Strength	Frail	0.47	Strong
Body Depth	Shallow	0.87	Deep
Dairy Form	Tight Ribbed	1.66	Open Ribbed
Rump Width	Narrow	1.38	Wide
Rump Angle	High Pins	-0.94	Sloped
Rear Leg (side view)	Posty	0.93	Sickled
Rear Leg (rear view)	Hock-in	1.90	Straight
Foot Angle	Low Angle	0.99	Steep Angle
Feet & Leg Score	Low	1.45	High
Fore Udder	Loose	2.27	Strong
Rear Udder Height	Low	2.81	High
Rear Udder Width	Narrow	2.63	Wide
Udder Cleft	Weak	0.80	Strong
Udder Depth	Deep	1.37	Shallow
Front Teat Placement	Wide	0.57	Close
Rear Teat Placement	Wide	0.72	Close
Teat Length	Short	0.39	Long



12-24
GUSA CDCB,
IB/MACE,
CDN and Zoetis
Genomic Eval.

HELLION



HOLSTEIN

744HO17425 HAVEITALL DROPBX HELLION-ET **A2A2**

DROPBOX X DOC X JEDI TR TP TM TC TY TV TL TD TE HH1T HH2T HH3T HH4T HH5T HH6T

HOLSTEIN NASIS: 80FFWFZ **BETA CASEIN:** A2A2

\$38 RRP \$33 SPECIAL \$80 SEXED \$75 SEXED SPECIAL

DAM: S-SI DOC HAVE NOT 8784-ET EX-96
4-05 2X 320D 16180 KGM 3.9% 637 KGF 3.1% 497 KGP
MGD: FLY-HIGHER JEDI HAVENOT-ET VG-87
4-07 3X 365D 14256 KGM 3.1% 447 KGF 3.1% 442 KGP



Dam: S-SI Doc Have Not 8784-ET EX-96

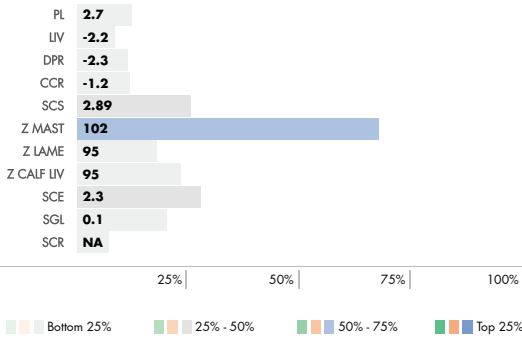
INDEXES

HHP\$ **783**
DWP\$ **564**
GPRO\$ **-122**
NM\$ **666**
TPI **2875**

PRODUCTION

PTAM **1579**
PTAF % **0.07**
PTAF **79**
PTAP % **0.03**
PTAP **58**

HEALTH AND FERTILITY TRAITS



PHYSICAL TRAIT EVALUATION

CDCB/HA Genetic Eval. 12-24
0 dtrs. 0 herds
79% Rel.

PTAT: 3.47 UDC: 2.81 FLC: 0.85 TPI: 2875

Stature	Short	3.10	Tall
Strength	Frail	2.16	Strong
Body Depth	Shallow	2.57	Deep
Dairy Form	Tight Ribbed	3.08	Open Ribbed
Rump Width	Narrow	2.79	Wide
Rump Angle	High Pins	0.65	Sloped
Rear Leg (side view)	Posty	0.08	Sickled
Rear Leg (rear view)	Hock-in	1.18	Straight
Foot Angle	Low Angle	1.88	Steep Angle
Feet & Leg Score	Low	1.48	High
Fore Udder	Loose	3.64	Strong
Rear Udder Height	Low	3.92	High
Rear Udder Width	Narrow	4.54	Wide
Udder Cleft	Weak	1.89	Strong
Udder Depth	Deep	2.29	Shallow
Front Teat Placement	Wide	1.82	Close
Rear Teat Placement	Wide	1.74	Close
Teat Length	Short	-0.53	Long



12-24
GUSA CDCB,
IB/MACE,
CDN and Zoetis
Genomic Eval.

HENDRIX



744HO16956 DUCKETT TATOO HENDRIX-ET

TATOO X DOC X JEDI TR TP TM TC TL TD TE HH1T HH2T HH3T HH4T HH5T HH6T

HOLSTEIN NASIS: 80FFVK6 **BETA CASEIN:** A1A2

\$38 RRP \$33 SPECIAL \$75 SEXED \$70 SEXED SPECIAL

BPI: 292 **OT:** 108 **MS:** 110

MILKING SPEED: 101 **TEMP:** 101

DAM: S-SI DOC HAVE NOT 8784-ET EX-96
4-05 2X 320D 16180 KGM 3.9% 637 KGF 3.1% 497 KGP
MGD: FLY-HIGHER JEDI HAVENOT-ET VG-87
4-07 3X 365D 14256 KGM 3.1% 447 KGF 3.1% 442 KGP



Dam: S-SI Doc Have Not 8784-ET EX-96

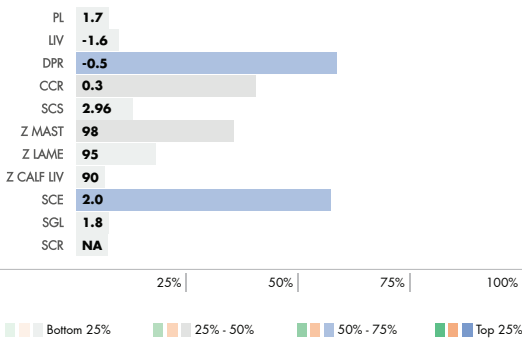
INDEXES

HHP\$ **420**
DWP\$ **160**
GPRO\$ **-33**
NM\$ **331**
TPI **2541**
BPI **292**

PRODUCTION

PTAM **687**
PTAF % **-0.02**
PTAF **20**
PTAP % **0.07**
PTAP **40**

HEALTH AND FERTILITY TRAITS



PHYSICAL TRAIT EVALUATION

CDCB/HA Genetic Eval. 12-24
0 dtrs. 0 herds
82% Rel.

PTAT: 3.16 UDC: 2.45 FLC: 0.86 TPI: 2541

Stature	Short	2.55	Tall
Strength	Frail	1.50	Strong
Body Depth	Shallow	2.03	Deep
Dairy Form	Tight Ribbed	2.64	Open Ribbed
Rump Width	Narrow	3.47	Wide
Rump Angle	High Pins	0.42	Sloped
Rear Leg (side view)	Posty	1.13	Sickled
Rear Leg (rear view)	Hock-in	0.89	Straight
Foot Angle	Low Angle	1.72	Steep Angle
Feet & Leg Score	Low	1.47	High
Fore Udder	Loose	3.33	Strong
Rear Udder Height	Low	3.39	High
Rear Udder Width	Narrow	3.61	Wide
Udder Cleft	Weak	1.70	Strong
Udder Depth	Deep	2.05	Shallow
Front Teat Placement	Wide	1.40	Close
Rear Teat Placement	Wide	1.44	Close
Teat Length	Short	-0.42	Long



12-24
GUSA CDCB,
IB/MACE,
CDN and Zoetis
Genomic Eval.

HERITAGE-P* RC



744HO17072 DUCKETT MAX HERITAGE-P-ET **A2A2**

MAX-PP* RC X DOC X JEDI RC PC TM TC TY TV TL TD TE HH1T HH2T HH3T HH4T HH5T HH6T

HOLSTEIN NASIS: 80FFWEM **BETA CASEIN: A2A2**

\$36 RRP \$31 SPECIAL \$80 SEXED \$75 SEXED SPECIAL

BPI: 222 OT: 105 MS: 108

MILKING SPEED: 104 TEMP: 101

DAM: S-S-I DOC HAVE NOT 8784-ET EX-96
4-05 2X 320D 16180 KGM 3.9% 637 KGF 3.1% 497 KGP
MGD: FLY-HIGHER JEDI HAVENOT-ET VG-87
4-07 3X 365D 14256 KGM 3.1% 447 KGF 3.1% 442 KGP

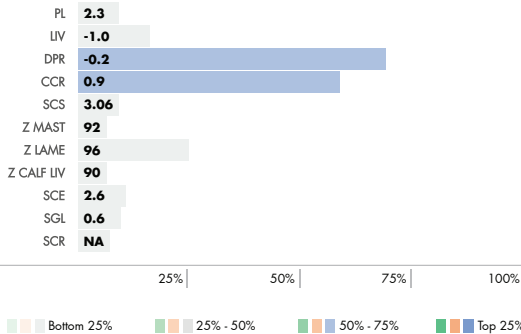
INDEXES

HHP\$	566
DWP\$	266
GPRO\$	-153
NM\$	496
TPI	2673
BPI	222

PRODUCTION

PTAM	1529
PTAF %	-0.06
PTAF	43
PTAP %	0.00
PTAP	47

HEALTH AND FERTILITY TRAITS



PHYSICAL TRAIT EVALUATION

CDCB/HA Genetic Eval. 12-24

0 dtrs. 0 herds
80% Rel.

PTAT: 2.77 UDC: 2.37 FLC: 1.01 TPI: 2673

Stature	Short	2.03	Tall
Strength	Frail	1.59	Strong
Body Depth	Shallow	1.78	Deep
Dairy Form	Tight Ribbed	1.88	Open Ribbed
Rump Width	Narrow	1.95	Wide
Rump Angle	High Pins	-0.54	Sloped
Rear Leg (side view)	Posty	-0.30	Sickled
Rear Leg (rear view)	Hock-in	1.55	Straight
Foot Angle	Low Angle	1.71	Steep Angle
Feet & Leg Score	Low	1.29	High
Fore Udder	Loose	2.77	Strong
Rear Udder Height	Low	3.38	High
Rear Udder Width	Narrow	3.76	Wide
Udder Cleft	Weak	1.34	Strong
Udder Depth	Deep	1.69	Shallow
Front Teat Placement	Wide	1.01	Close
Rear Teat Placement	Wide	0.91	Close
Teat Length	Short	0.33	Long



12-24 GUSA CDCB, IB/MACE, CDN and Zoetis Genomic Eval.

IMAGE



744HO17702 HAVEITALL SIDEKCK IMAGE-ET **A2A2**

SIDEKICK X DOC X JEDI TR TP TM TC TL TD TE HH1T HH2T HH3T HH4T HH5T HH6T

HOLSTEIN NASIS: TBA **BETA CASEIN: A2A2**

\$36 RRP \$31 SPECIAL \$75 SEXED \$70 SEXED SPECIAL

DAM: S-S-I DOC HAVE NOT 8784-ET EX-96
4-05 2X 320D 16180 KGM 3.9% 637 KGF 3.1% 497 KGP
MGD: FLY-HIGHER JEDI HAVENOT-ET VG-87
4-07 3X 365D 14256 KGM 3.1% 447 KGF 3.1% 442 KGP

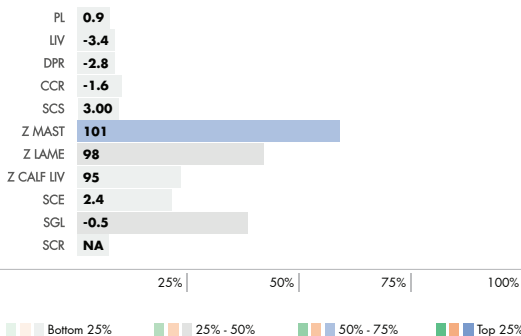
INDEXES

HHP\$	522
DWP\$	335
GPRO\$	-170
NM\$	337
TPI	2589

PRODUCTION

PTAM	993
PTAF %	0.03
PTAF	47
PTAP %	0.05
PTAP	45

HEALTH AND FERTILITY TRAITS



PHYSICAL TRAIT EVALUATION

CDCB/HA Genetic Eval. 12-24

0 dtrs. 0 herds
82% Rel.

PTAT: 3.39 UDC: 2.57 FLC: 1.15 TPI: 2589

Stature	Short	2.53	Tall
Strength	Frail	1.94	Strong
Body Depth	Shallow	2.40	Deep
Dairy Form	Tight Ribbed	2.62	Open Ribbed
Rump Width	Narrow	2.80	Wide
Rump Angle	High Pins	-0.07	Sloped
Rear Leg (side view)	Posty	1.16	Sickled
Rear Leg (rear view)	Hock-in	1.59	Straight
Foot Angle	Low Angle	1.63	Steep Angle
Feet & Leg Score	Low	1.64	High
Fore Udder	Loose	3.37	Strong
Rear Udder Height	Low	3.57	High
Rear Udder Width	Narrow	3.59	Wide
Udder Cleft	Weak	1.94	Strong
Udder Depth	Deep	2.28	Shallow
Front Teat Placement	Wide	1.23	Close
Rear Teat Placement	Wide	1.15	Close
Teat Length	Short	0.54	Long



12-24 GUSA CDCB, IB/MACE, CDN and Zoetis Genomic Eval.



744HO17423 MR DUCKETT LAMBDA JINX-ET

DELTA-LAMBDA X DOC X G W ATWOOD

TR TP TM TC TL TD TE HH1T HH2T HH3T HH4T HH5T HH6T

DAM: PEACE&PLENTY DOC JUBIE16-ET EX-94

4-03 2X 365D 16828 KGM 4.1% 692 KGF 3.1% 520 KGP

MGD: PEACE&PLENTY ATWD JUBILANT EX-93

4-09 2X 305D 13499 KGM 4.0% 538 KGF 3.1% 424 KGP

HOLSTEIN NASIS: 80FFWES **BETA CASEIN:** A1A2

\$36 RRP \$31 SPECIAL \$80 SEXED \$75 SEXED SPECIAL

BPI: 235 **OT:** 106 **MS:** 111

MILKING SPEED: 102 **TEMP:** 103



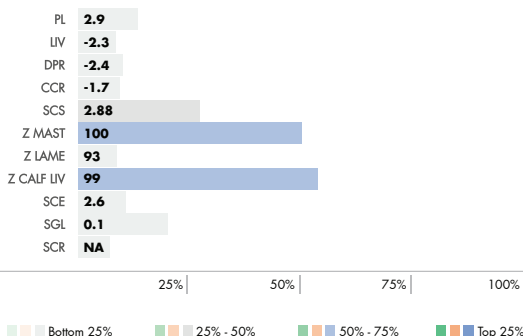
INDEXES

HHP\$	484
DWP\$	368
GPRO\$	-176
NM\$	491
TPI	2663
BPI	235

PRODUCTION

PTAM	1425
PTAF %	-0.04
PTAF	44
PTAP %	0.00
PTAP	44

HEALTH AND FERTILITY TRAITS



PHYSICAL TRAIT EVALUATION

CDCB/HA Genetic Eval. 12-24

0 dtrs. 0 herds
81% Rel.

PTAT: 3.24 UDC: 2.77 FLC: 1.85 TPI: 2663

Stature	Short	1.53	Tall
Strength	Frail	1.10	Strong
Body Depth	Shallow	1.60	Deep
Dairy Form	Tight Ribbed	2.30	Open Ribbed
Rump Width	Narrow	1.71	Wide
Rump Angle	High Pins	0.03	Sloped
Rear Leg (side view)	Posty	-0.30	Sickled
Rear Leg (rear view)	Hock-in	2.30	Straight
Foot Angle	Low Angle	2.31	Steep Angle
Feet & Leg Score	Low	1.94	High
Fore Udder	Loose	2.71	Strong
Rear Udder Height	Low	4.09	High
Rear Udder Width	Narrow	4.36	Wide
Udder Cleft	Weak	2.22	Strong
Udder Depth	Deep	1.16	Shallow
Front Teat Placement	Wide	1.46	Close
Rear Teat Placement	Wide	2.13	Close
Teat Length	Short	0.25	Long



12-24
GUSA CDCB,
IB/MACE,
CDN and Zoetis
Genomic Eval.

KINGME-P



744HO17422 CARTERS-CORNER KINGME-P-ET **A2A2**

LUSTROUS PP X NOBLE X DELTA

TR PC TM TC TL TD TE HH1T HH2T HH3T HH4T HH5T HH6T

DAM: BGP NOBLE DHRMY 695-ET VG-88

2-04 2X 365D 19051 KGM 3.7% 704 KGF 3.2% 617 KGP

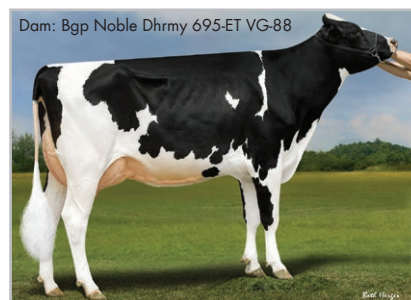
MGD: BGP DELTA HARMONY-ET VG-87

HOLSTEIN NASIS: 80FFVWO **BETA CASEIN:** A2A2

\$40 RRP \$35 SPECIAL \$95 SEXED \$90 SEXED SPECIAL

BPI: 337 **OT:** 102 **MS:** 108

MILKING SPEED: 101 **TEMP:** 100



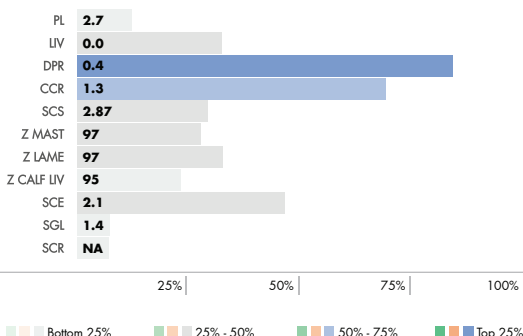
INDEXES

HHP\$	592
DWP\$	433
GPRO\$	68
NM\$	550
TPI	2715
BPI	337

PRODUCTION

PTAM	842
PTAF %	0.04
PTAF	42
PTAP %	0.02
PTAP	32

HEALTH AND FERTILITY TRAITS



PHYSICAL TRAIT EVALUATION

CDCB/HA Genetic Eval. 12-24

0 dtrs. 0 herds
80% Rel.

PTAT: 3.01 UDC: 2.63 FLC: 1.34 TPI: 2715

Stature	Short	2.27	Tall
Strength	Frail	0.65	Strong
Body Depth	Shallow	1.06	Deep
Dairy Form	Tight Ribbed	2.41	Open Ribbed
Rump Width	Narrow	1.76	Wide
Rump Angle	High Pins	-0.71	Sloped
Rear Leg (side view)	Posty	0.59	Sickled
Rear Leg (rear view)	Hock-in	1.24	Straight
Foot Angle	Low Angle	1.90	Steep Angle
Feet & Leg Score	Low	1.85	High
Fore Udder	Loose	3.10	Strong
Rear Udder Height	Low	3.52	High
Rear Udder Width	Narrow	2.93	Wide
Udder Cleft	Weak	2.31	Strong
Udder Depth	Deep	3.04	Shallow
Front Teat Placement	Wide	2.25	Close
Rear Teat Placement	Wide	2.19	Close
Teat Length	Short	-1.10	Long

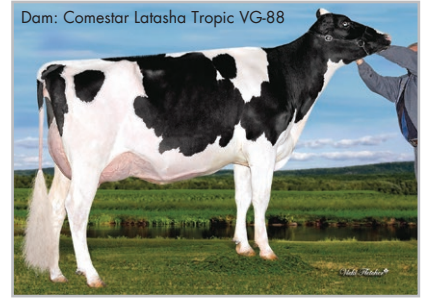
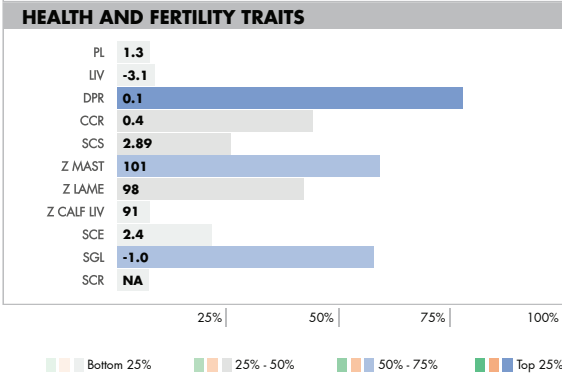
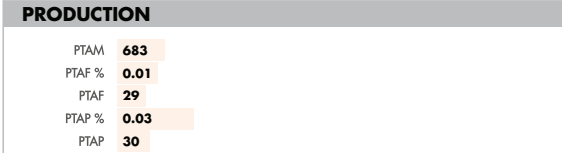


12-24
GUSA CDCB,
IB/MACE,
CDN and Zoetis
Genomic Eval.

744HO17421 COMESTAR LACTEUR **A2A2**
BULLSEYE X TROPIC X UNIX TR TP TM TC TL TD TE HH1T HH2T HH3T HH4T HH5T HH6T

HOLSTEIN NASIS: TBA BETA CASEIN: A2A2
 \$36 RRP \$31 SPECIAL \$75 SEXED \$70 SEXED SPECIAL
 BPI: 324 OT: 109 MS: 111
 MILKING SPEED: 102 TEMP: 103

DAM: COMESTAR LATASHA TROPIC VG-88
 MGD: COMESTAR LANIKE UNIX VG-88
 4-05 2X 365D 14254 KGM 3.9% 554 KGF 3.0% 431 KGP



PHYSICAL TRAIT EVALUATION

CDCB/HA Genetic Eval. 12-24
 0 dtrs. 0 herds
 79% Rel.

PTAT: 2.89	UDC: 2.26	FLC: 1.35	TPI: 2523
Stature	Short	2.70	Tall
Strength	Frail	1.88	Strong
Body Depth	Shallow	2.01	Deep
Dairy Form	Tight Ribbed	1.69	Open Ribbed
Rump Width	Narrow	2.52	Wide
Rump Angle	High Pins	0.04	Sloped
Rear Leg (side view)	Posty	-0.11	Sickled
Rear Leg (rear view)	Hock-in	1.89	Straight
Foot Angle	Low Angle	1.92	Steep Angle
Feet & Leg Score	Low	1.79	High
Fore Udder	Loose	2.76	Strong
Rear Udder Height	Low	3.48	High
Rear Udder Width	Narrow	3.47	Wide
Udder Cleft	Weak	1.91	Strong
Udder Depth	Deep	1.72	Shallow
Front Teat Placement	Wide	1.33	Close
Rear Teat Placement	Wide	1.45	Close
Teat Length	Short	0.19	Long



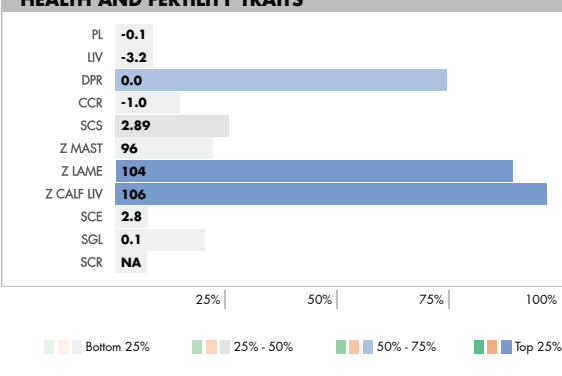
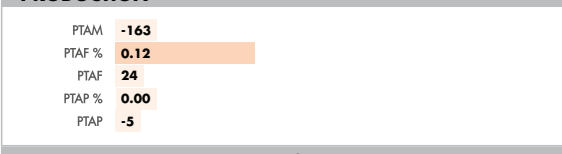
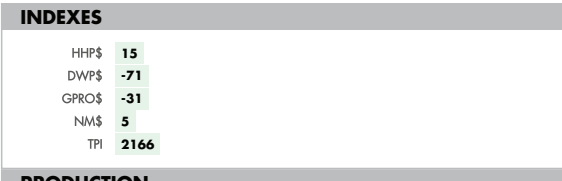
12-24
 GUSA CDCB,
 IB/MA/CE,
 CDN and Zoetis
 Genomic Eval.

MIRACULOUS-RED

744HO17701 MAPLES MIRACULOUS-RED-ET
ALPHA X UNSTOPABULL X ARMANI*RC TP TM TC TL TD TE HH1T HH2T HH3T HH4T HH5T HH6T

HOLSTEIN NASIS: 80FFWGA BETA CASEIN: A1A1
 \$36 RRP \$31 SPECIAL \$75 SEXED \$70 SEXED SPECIAL

DAM: BLONDIN RD UNSTOPABULL MAPLE EX-94
 MGD: KAWARTHA ARMANI MEMORY EX-92
 5-03 2X 365D 15246 KGM 4.5% 688 KGF 3.1% 469 KGP



PHYSICAL TRAIT EVALUATION

CDCB/HA Genetic Eval. 12-24
 0 dtrs. 0 herds
 78% Rel.

PTAT: 1.72	UDC: 1.69	FLC: 1.18	TPI: 2166
Stature	Short	1.76	Tall
Strength	Frail	1.01	Strong
Body Depth	Shallow	1.09	Deep
Dairy Form	Tight Ribbed	0.85	Open Ribbed
Rump Width	Narrow	1.29	Wide
Rump Angle	High Pins	0.01	Sloped
Rear Leg (side view)	Posty	-0.48	Sickled
Rear Leg (rear view)	Hock-in	1.73	Straight
Foot Angle	Low Angle	2.10	Steep Angle
Feet & Leg Score	Low	1.35	High
Fore Udder	Loose	2.02	Strong
Rear Udder Height	Low	3.15	High
Rear Udder Width	Narrow	2.26	Wide
Udder Cleft	Weak	0.82	Strong
Udder Depth	Deep	1.42	Shallow
Front Teat Placement	Wide	0.15	Close
Rear Teat Placement	Wide	-0.27	Close
Teat Length	Short	-0.28	Long



12-24
 GUSA CDCB,
 IB/MA/CE,
 CDN and Zoetis
 Genomic Eval.

™Gforce, Gforce+, Showcase, gender SELECTED and Elite Sexed Fertility are trademarks of Select Sires Inc. ™FeedPRO, RobotPRO, FertilityPRO, Mastitis ResistantPRO, GrazingPRO, NGEN and HHPs are registered trademarks of Select Sires Inc. Ultraplus™ is a trademark of STGen LLC. All gender SELECTED semen is processed using Ultraplus™ technology. ™TPI is a registered trademark of Holstein USA. ™JPI and JPI are registered trademarks of AICA. ™DWPS is registered trademark of Zoetis, Inc., its affiliates and/or its licensors. Evaluations for non-conformation traits are Powered by CDCB™ unless otherwise noted.