

WWS AUSTRALIA

VALUE SELECTION GUIDE

AUGUST 2024



HERE FOR YOU.



WORLD WIDE SIRES

(03) 5831 5559 • info@wwsaustralia.com



wwsaustralia.com

A & M Gristede at Timboon in Western Victoria;
photo by Andrew Cullen

Product of the USA

ALLGONE-PP



250HO16801 AR-JOY CU ALLGONE-PP-ET **A2A2**

PLAYOFF-P X PERFECT X DRASTIC-P TR PP TM TC TY TL TD TE HH1T HH2T HH3T HH4T HH5T HH6T

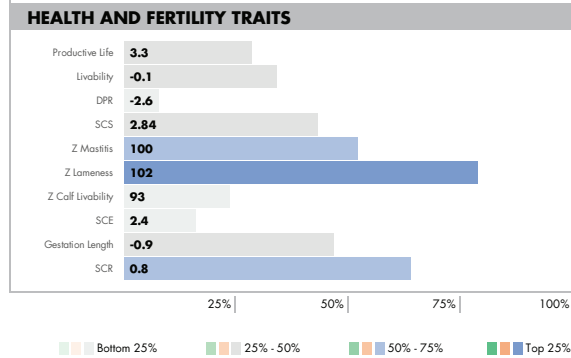
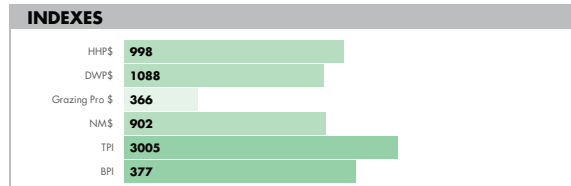
DAM: AR-JOY CU PARI ALYSSA-ET

HOLSTEIN NASIS: 80FFVK4 BETA CASEIN: A2A2 \$32 RRP \$70 SEXED

MGD: AR-JOY CU DRAST APPLE-PET VG-86

BPI: 377 OT: 99 MS: 101 MILKING SPEED: 104 TEMP: 100

1-10 3X 365D 13376 KGM 4.8% 639 KGF 3.8% 506 KGP



PHYSICAL TRAIT EVALUATION

CDCB/HA Genetic Eval. 08-24
0 dtrs. 0 herds
78% Rel.

PTAT: 1.94 UDC: 2.41 FLC: 0.45 TPI: 3005

Stature	Short	1.45	Tall
Strength	Frail	0.28	Strong
Body Depth	Shallow	0.42	Deep
Dairy Form	Tight Ribbed	1.46	Open Ribbed
Rump Width	Narrow	1.94	Wide
Rump Angle	High Pins	1.05	Sloped
Rear Leg (side view)	Posty	-0.19	Sickled
Rear Leg (rear view)	Hock-in	0.82	Straight
Foot Angle	Low Angle	0.87	Steep Angle
Feet & Leg Score	Low	0.69	High
Fore Udder	Loose	2.80	Strong
Rear Udder Height	Low	3.28	High
Rear Udder Width	Narrow	3.08	Wide
Udder Cleft	Weak	1.44	Strong
Udder Depth	Deep	2.21	Shallow
Front Teat Placement	Wide	1.31	Close
Rear Teat Placement	Wide	1.73	Close
Teat Length	Short	-1.25	Long



GUSA 08-24
CDN Genomic
Eval. 08-24
Zoetis 09-24

ANALYST-RED



7HO15023 MR AFFECTION ANALYST-RED-ET

UNSTOPABULL X BYWAY X G W ATWOOD TP TC TY TV TL TD TE HH1T HH2T HH3T HH4T HH5T HH6T

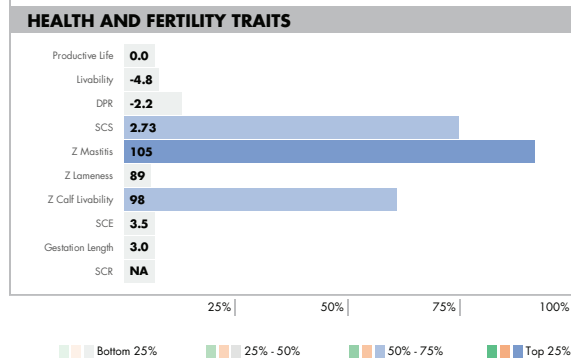
DAM: MILKSOURCE BYWAY AFFECTION EX-94

HOLSTEIN NASIS: 80FFRCL BETA CASEIN: A1A2 \$18 RRP

4-05 2X 305D 18126 KGM 4.3% 788 KGF 2.6% 469 KGP

BPI: 124 OT: 105 MS: 108 MILKING SPEED: 102 TEMP: 102

MGD: MS APPLE ATARAH-ET



PHYSICAL TRAIT EVALUATION

CDCB/HA Genetic Eval. 08-24
1019 dtrs. 441 herds
98% Rel.

PTAT: 2.02 UDC: 1.49 FLC: 1.14 TPI: 1762

Stature	Short	3.63	Tall
Strength	Frail	0.94	Strong
Body Depth	Shallow	0.90	Deep
Dairy Form	Tight Ribbed	0.34	Open Ribbed
Rump Width	Narrow	0.30	Wide
Rump Angle	High Pins	0.93	Sloped
Rear Leg (side view)	Posty	-1.52	Sickled
Rear Leg (rear view)	Hock-in	2.44	Straight
Foot Angle	Low Angle	3.03	Steep Angle
Feet & Leg Score	Low	1.62	High
Fore Udder	Loose	2.57	Strong
Rear Udder Height	Low	2.12	High
Rear Udder Width	Narrow	1.32	Wide
Udder Cleft	Weak	1.96	Strong
Udder Depth	Deep	3.37	Shallow
Front Teat Placement	Wide	1.77	Close
Rear Teat Placement	Wide	1.87	Close
Teat Length	Short	-1.40	Long



IB/MACE-G 08-24
CDN Genomic
Eval. 08-24
Zoetis 09-24

BURGOON



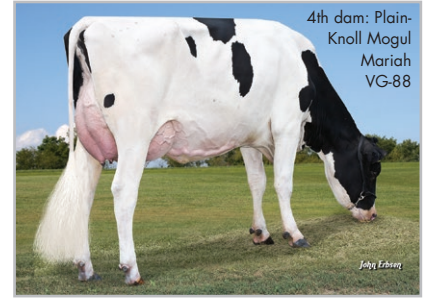
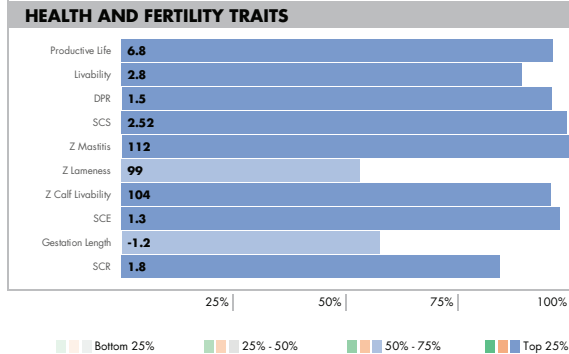
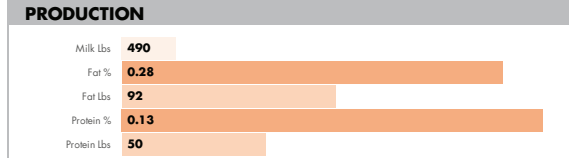
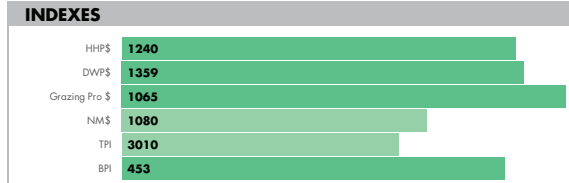
7H016163 HOUIN AURORA MSY BURGOON-ET **A2A2**
MASSEY X RENEGADE X SUPERSRING TR TP TC TY TV TL TD TE HH1T HH2T HH3T HH4T HH5T HH6T

DAM: MS HOMESTEAD SSI 16 298-ET GP-81
 2-01 3X 305D 13640 KGM 4.4% 596 KGF 3.5% 471 KGP
 MGD: BADGER S-S1 7467 16-ET GP-83
 2-00 3X 305D 16316 KGM 3.8% 622 KGF 3.2% 517 KGP

HOLSTEIN NASIS: 80FFUGT BETA CASEIN: A2A2 \$28 RRP \$60 SEXED
 BPI: 453 OT: 96 MS: 96 MILKING SPEED: 99 TEMP: 100

453 BPI

HOLSTEIN



PHYSICAL TRAIT EVALUATION

CDCB/HA Genetic Eval. 08-24
 0 dtrs. 0 herds
 81% Rel.

PTAT: 0.55 UDC: 0.80 FLC: 0.13 TPI: 3010

Stature	Short	0.20	Tall
Strength	Frail	-0.71	Strong
Body Depth	Shallow	-0.85	Deep
Dairy Form	Tight Ribbed	0.61	Open Ribbed
Rump Width	Narrow	0.25	Wide
Rump Angle	High Pins	0.77	Sloped
Rear Leg (side view)	Posty	0.70	Sickled
Rear Leg (rear view)	Hock-in	0.04	Straight
Foot Angle	Low Angle	-0.37	Steep Angle
Feet & Leg Score	Low	0.25	High
Fore Udder	Loose	0.81	Strong
Rear Udder Height	Low	0.50	High
Rear Udder Width	Narrow	0.62	Wide
Udder Cleft	Weak	0.98	Strong
Udder Depth	Deep	1.39	Shallow
Front Teat Placement	Wide	0.76	Close
Rear Teat Placement	Wide	0.84	Close
Teat Length	Short	-1.05	Long



GUSA 08-24
 CDN Genomic
 Eval. 08-24
 Zoetis 09-24

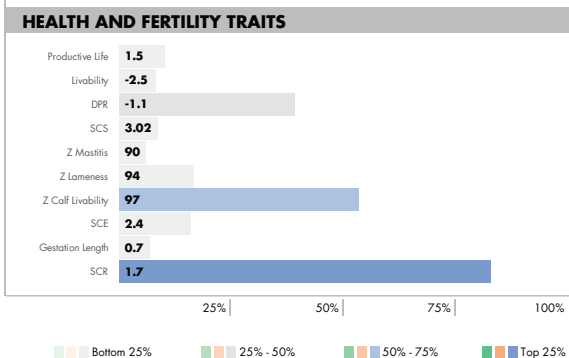
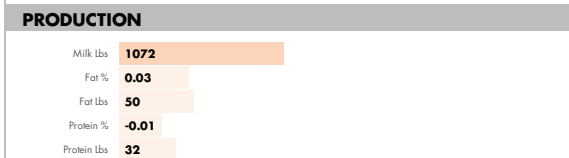
CADILLAC



7H015634 KINGS-RANSOM D CADILLAC-ET
DOC X KINGBOY X MOGUL TR TP TC TY TV TL TD TE HH1T HH2T HH3T HH4T HH5T HH6T

DAM: KINGS-RANSOM CANTELOUPES-ET VG-88
 2-09 2X 365D 13830 KGM 4.7% 646 KGF 3.2% 443 KGP
 MGD: KINGS-RANSOM MG CLEAVAGE-ET EX-95
 4-10 3X 365D 15631 KGM 5.1% 792 KGF 3.3% 508 KGP

HOLSTEIN NASIS: 80FFTBO BETA CASEIN: A1A2 \$30 RRP \$65 SEXED
 BPI: 257 OT: 106 MS: 112 MILKING SPEED: 103 TEMP: 102



PHYSICAL TRAIT EVALUATION

CDCB/HA Genetic Eval. 08-24
 0 dtrs. 0 herds
 81% Rel.

PTAT: 3.05 UDC: 2.52 FLC: 1.37 TPI: 2588

Stature	Short	2.80	Tall
Strength	Frail	0.98	Strong
Body Depth	Shallow	1.87	Deep
Dairy Form	Tight Ribbed	3.43	Open Ribbed
Rump Width	Narrow	2.57	Wide
Rump Angle	High Pins	0.28	Sloped
Rear Leg (side view)	Posty	1.34	Sickled
Rear Leg (rear view)	Hock-in	1.82	Straight
Foot Angle	Low Angle	2.00	Steep Angle
Feet & Leg Score	Low	1.91	High
Fore Udder	Loose	3.15	Strong
Rear Udder Height	Low	3.71	High
Rear Udder Width	Narrow	3.76	Wide
Udder Cleft	Weak	2.04	Strong
Udder Depth	Deep	2.01	Shallow
Front Teat Placement	Wide	2.11	Close
Rear Teat Placement	Wide	2.22	Close
Teat Length	Short	0.51	Long



IB/MACE-G 08-24
 CDN Genomic
 Eval. 08-24
 Zoetis 09-24

CHEESE



14HO15312 PINE-TREE LEGACY CHEESE-ET **A2A2**

LEGACY X DELTA X SUPERSIRE TR TP TC TY TV TL TD TE HH1T HH2T HH3T HH4T HH5T HH6T

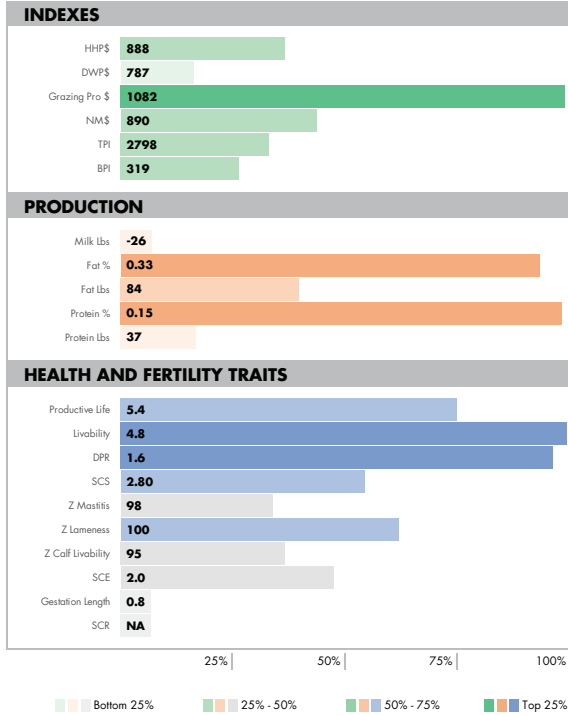
HOLSTEIN NASIS: 80FFSMW **BETA CASEIN: A2A2** \$20 RRP \$40 SEXED

BPI: 319 OT: 99 MS: 101 MILKING SPEED: 100 TEMP: 99

DAM: SANDY-VALLEY NO LIMIT-ET VG-86

5-07 2X 329D 10614 KGM 5.3% 560 KGF 3.5% 373 KGP

MGD: SANDY-VALLEY SS PSYCH-ET



PHYSICAL TRAIT EVALUATION

CDCB/HA Genetic Eval. 08-24
49 dtrs. 11 herds
88% Rel.

PTAT: -0.03 UDC: 1.09 FLC: -0.57 TPI: 2798

Stature	Short	-1.77	Tall
Strength	Frail	-0.96	Strong
Body Depth	Shallow	-1.43	Deep
Dairy Form	Tight Ribbed	-0.70	Open Ribbed
Rump Width	Narrow	-0.40	Wide
Rump Angle	High Pins	0.67	Sloped
Rear Leg (side view)	Posty	-0.21	Sickled
Rear Leg (rear view)	Hock-in	-1.29	Straight
Foot Angle	Low Angle	-0.77	Steep Angle
Feet & Leg Score	Low	-0.79	High
Fore Udder	Loose	1.24	Strong
Rear Udder Height	Low	1.03	High
Rear Udder Width	Narrow	0.58	Wide
Udder Cleft	Weak	-0.10	Strong
Udder Depth	Deep	0.65	Shallow
Front Teat Placement	Wide	-0.47	Close
Rear Teat Placement	Wide	-0.60	Close
Teat Length	Short	-0.62	Long



IB/MACE-G 08-24
CDN Genomic
Eval. 08-24
Zoetis 09-24

CHIP



9HO16227 S-S-I CONWAY CHIP SLICK-ET **A2A2**

CONWAY X LONE RANGER X JODANDY TR TP TC TY TV TL TD TE HH1T HH2T HH3T HH4T HH5T HH6T

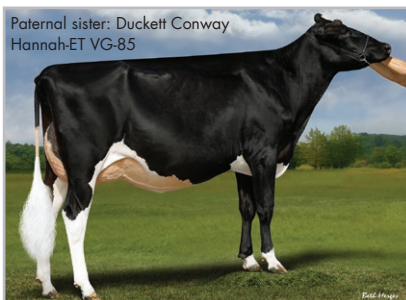
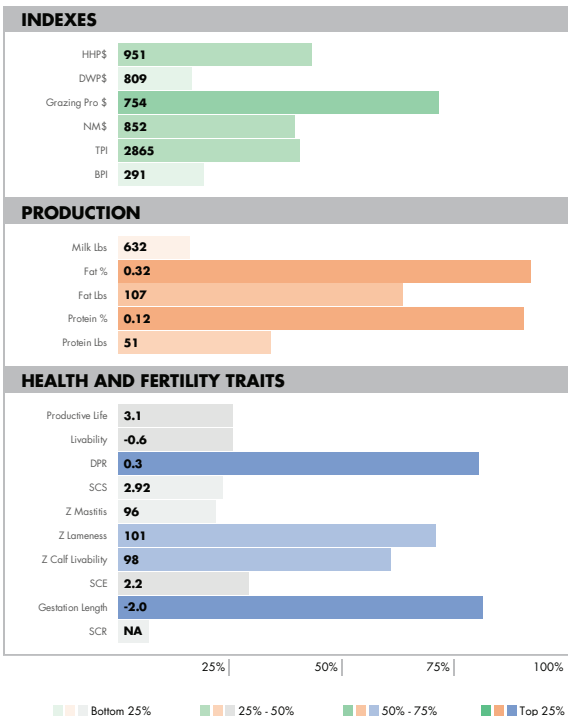
HOLSTEIN NASIS: 80FFUGD **BETA CASEIN: A2A2** \$28 RRP \$70 SEXED

BPI: 291 OT: 102 MS: 97 MILKING SPEED: 101 TEMP: 100

DAM: S-S-I RANGER 9092 11199-ET VG-85

3-03 3X 305D 15055 KGM 5.2% 789 KGF 3.7% 555 KGP

MGD: S-S-I JODANDY 1088 9092



PHYSICAL TRAIT EVALUATION

CDCB/HA Genetic Eval. 08-24
0 dtrs. 0 herds
79% Rel.

PTAT: 0.87 UDC: 0.44 FLC: 0.60 TPI: 2865

Stature	Short	0.30	Tall
Strength	Frail	0.30	Strong
Body Depth	Shallow	0.64	Deep
Dairy Form	Tight Ribbed	1.04	Open Ribbed
Rump Width	Narrow	0.24	Wide
Rump Angle	High Pins	-0.10	Sloped
Rear Leg (side view)	Posty	0.57	Sickled
Rear Leg (rear view)	Hock-in	0.96	Straight
Foot Angle	Low Angle	0.13	Steep Angle
Feet & Leg Score	Low	0.57	High
Fore Udder	Loose	0.95	Strong
Rear Udder Height	Low	1.07	High
Rear Udder Width	Narrow	0.81	Wide
Udder Cleft	Weak	-0.70	Strong
Udder Depth	Deep	0.11	Shallow
Front Teat Placement	Wide	-0.49	Close
Rear Teat Placement	Wide	-0.91	Close
Teat Length	Short	-0.31	Long



GUSA 08-24
CDN Genomic
Eval. 08-24
Zoetis 09-24

14HO15223 SANDY-VALLEY R CONWAY-ET A2A2

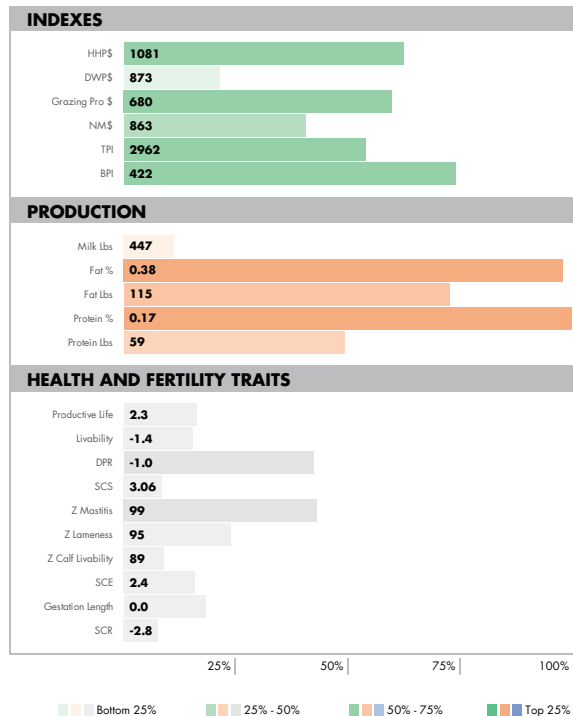
RENEGADE X GRANITE X DRACO TR TP TC TY TV TL TD TE HH1T HH2T HH3T HH4T HH5T HH6T

HOLSTEIN NASIS: 80FFSDA BETA CASEIN: A2A2 \$35 RRP \$70 SEXED

BPI: 422 OT: 105 MS: 102 MILKING SPEED: 99 TEMP: 100

DAM: SANDY-VALLEY COTTON-ET GP-82
1-11 2X 180D 6314 KGM % 270 KGF % 200 KGP

MGD: SANDY-VALLEY CALICO-ET EX-90
4-00 2X 305D 13762 KGM 4.3% 588 KGF 3.2% 440 KGP



PHYSICAL TRAIT EVALUATION

CDCB/HA Genetic Eval. 08-24
1803 dtrs. 181 herds
99% Rel.

PTAT: 1.90 UDC: 1.15 FLC: 1.28 TPI: 2962

Stature	Short	1.48	Tall
Strength	Frail	0.74	Strong
Body Depth	Shallow	1.19	Deep
Dairy Form	Tight Ribbed	1.66	Open Ribbed
Rump Width	Narrow	0.76	Wide
Rump Angle	High Pins	-0.15	Sloped
Rear Leg (side view)	Posty	1.92	Sickled
Rear Leg (rear view)	Hock-in	1.86	Straight
Foot Angle	Low Angle	0.69	Steep Angle
Feet & Leg Score	Low	1.54	High
Fore Udder	Loose	2.19	Strong
Rear Udder Height	Low	1.70	High
Rear Udder Width	Narrow	1.32	Wide
Udder Cleft	Weak	0.11	Strong
Udder Depth	Deep	1.34	Shallow
Front Teat Placement	Wide	0.45	Close
Rear Teat Placement	Wide	0.05	Close
Teat Length	Short	0.03	Long



IB/MACE G 08-24
CDN Genomic
Eval. 08-24
Zoetis 09-24

250HO16074 OCD PERFECT FIGARO-ET

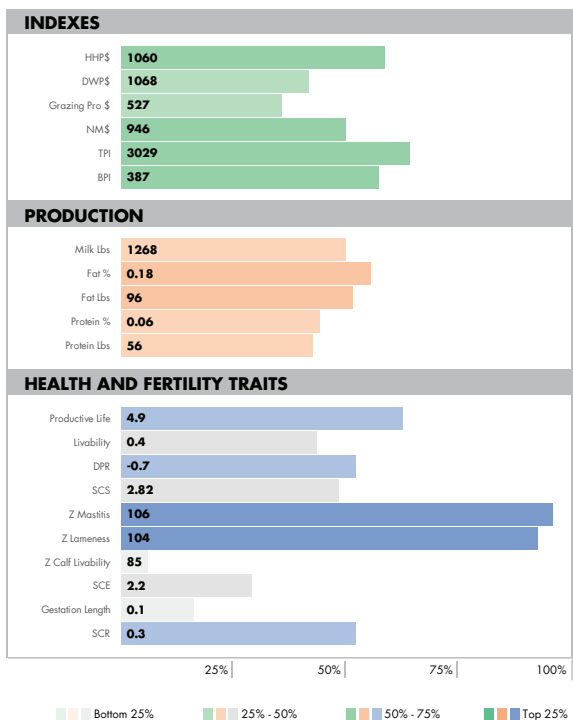
PERFECT X COFFEE X BURLEY TR TP TC TY TV TL TD TE HH1T HH2T HH3T HH4T HH5T HH6T

HOLSTEIN NASIS: 80FFUHV BETA CASEIN: A1A2 \$32 RRP \$70 SEXED

BPI: 387 OT: 99 MS: 102 MILKING SPEED: 100 TEMP: 100

DAM: OCD COFFEE FRANCES 47695-ET VG-88
3-01 3X 365D 18048 KGM 4.0% 725 KGF 3.2% 575 KGP

MGD: OCD BURLEY FRANCES 41330-ET EX-91
5-07 3X 365D 18937 KGM 4.5% 858 KGF 3.3% 630 KGP



PHYSICAL TRAIT EVALUATION

CDCB/HA Genetic Eval. 08-24
0 dtrs. 0 herds
81% Rel.

PTAT: 2.06 UDC: 2.24 FLC: 1.20 TPI: 3029

Stature	Short	0.88	Tall
Strength	Frail	0.45	Strong
Body Depth	Shallow	0.22	Deep
Dairy Form	Tight Ribbed	0.74	Open Ribbed
Rump Width	Narrow	1.75	Wide
Rump Angle	High Pins	-0.92	Sloped
Rear Leg (side view)	Posty	0.11	Sickled
Rear Leg (rear view)	Hock-in	2.15	Straight
Foot Angle	Low Angle	1.36	Steep Angle
Feet & Leg Score	Low	1.05	High
Fore Udder	Loose	2.34	Strong
Rear Udder Height	Low	3.02	High
Rear Udder Width	Narrow	2.88	Wide
Udder Cleft	Weak	0.88	Strong
Udder Depth	Deep	1.87	Shallow
Front Teat Placement	Wide	0.36	Close
Rear Teat Placement	Wide	0.68	Close
Teat Length	Short	-0.12	Long



GUSA 08-24
CDN Genomic
Eval. 08-24
Zoetis 09-24

FIONN



7H016820 T-SPRUCE F BITE FIONN-ET **A2A2**

FROST BITE X EINSTEIN X NUGENT TR TP TM TC TY TV TL TD TE HH1T HH2T HH3T HH4T HH5T HH6T

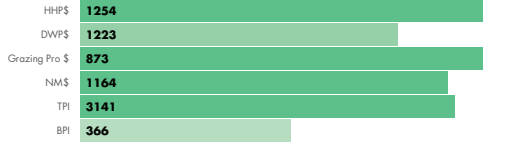
HOLSTEIN NANSIS: 80FFVG5 BETA CASEIN: A2A2 \$32 RRP \$65 SEXED
BPI: 366 OT: 97 MS: 101 MILKING SPEED: 100 TEMP: 100

DAM: T-SPRUCE EINSTEIN 14632-ET

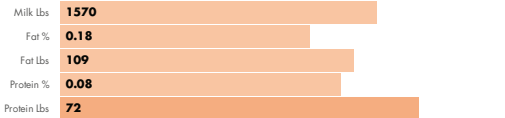
MGD: T-SPRUCE NUGENT 12660-ET VG-85

4-09 3X 302D 12778 KGM 4.4% 567 KGF 3.4% 434 KGP

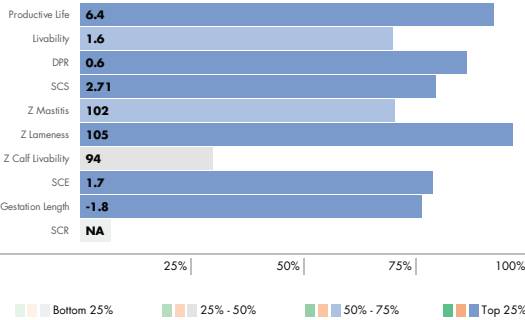
INDEXES



PRODUCTION



HEALTH AND FERTILITY TRAITS



Paternal sisters:
Lars-Arces
Frost Bite
daughters

PHYSICAL TRAIT EVALUATION

CDCB/HA Genetic Eval. 08-24

0 dtrs. 0 herds
79% Rel.

PTAT: 0.77 UDC: 1.29 FLC: -0.33 TPI: 3141

Stature	Short		-0.84	Tall
Strength	Frail		-0.06	Strong
Body Depth	Shallow		-0.52	Deep
Dairy Form	Tight Ribbed		0.12	Open Ribbed
Rump Width	Narrow		1.09	Wide
Rump Angle	High Pins		-0.47	Sloped
Rear Leg (side view)	Posty		0.17	Sickled
Rear Leg (rear view)	Hock-in		-1.01	Straight
Foot Angle	Low Angle		-0.52	Steep Angle
Feet & Leg Score	Low		-0.33	High
Fore Udder	Loose		0.82	Strong
Rear Udder Height	Low		1.54	High
Rear Udder Width	Narrow		2.07	Wide
Udder Cleft	Weak		0.44	Strong
Udder Depth	Deep		0.09	Shallow
Front Teat Placement	Wide		0.17	Close
Rear Teat Placement	Wide		0.44	Close
Teat Length	Short		-0.25	Long



GUSA 08-24
CDN Genomic
Eval. 08-24
Zoetis 09-24

FIREBALL-RED



7H016414 MELARRY FIREBALL-RED-ET **A2A2**

ROMPEN-RED X SALSA-RED X FRAZZLED TP TC TY TV TL TD TE HH1T HH2T HH3T HH4T HH5T HH6T

HOLSTEIN NANSIS: 80FFUGY BETA CASEIN: A2A2 NA RRP \$75 SEXED
BPI: 392 OT: 98 MS: 102 MILKING SPEED: 102 TEMP: 101

DAM: MELARRY SALSA 3942-ET VG-87

3-04 2X 305D 15762 KGM 4.1% 649 KGF 3.5% 548 KGP

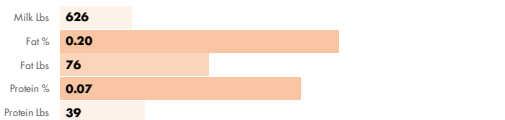
MGD: MELARRY FRAZZLD FANDANGO-ET

2-04 2X 305D 14145 KGM 3.7% 523 KGF 3.3% 463 KGP

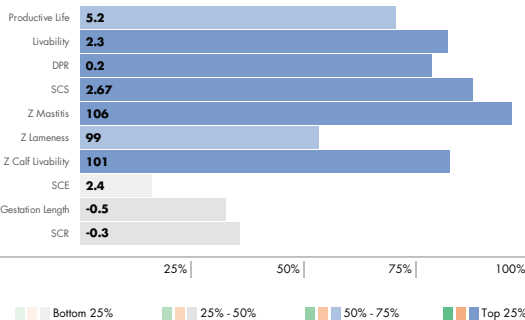
INDEXES



PRODUCTION



HEALTH AND FERTILITY TRAITS



4th dam: Melarry Mogul Freck-ET
EX-90

PHYSICAL TRAIT EVALUATION

CDCB/HA Genetic Eval. 08-24

0 dtrs. 0 herds
81% Rel.

PTAT: 1.21 UDC: 1.58 FLC: 0.60 TPI: 2841

Stature	Short		1.15	Tall
Strength	Frail		-0.32	Strong
Body Depth	Shallow		-0.31	Deep
Dairy Form	Tight Ribbed		0.95	Open Ribbed
Rump Width	Narrow		0.67	Wide
Rump Angle	High Pins		-0.75	Sloped
Rear Leg (side view)	Posty		0.29	Sickled
Rear Leg (rear view)	Hock-in		0.70	Straight
Foot Angle	Low Angle		1.23	Steep Angle
Feet & Leg Score	Low		0.80	High
Fore Udder	Loose		2.04	Strong
Rear Udder Height	Low		2.07	High
Rear Udder Width	Narrow		0.98	Wide
Udder Cleft	Weak		0.65	Strong
Udder Depth	Deep		2.41	Shallow
Front Teat Placement	Wide		1.17	Close
Rear Teat Placement	Wide		0.94	Close
Teat Length	Short		-0.53	Long



GUSA 08-24
CDN Genomic
Eval. 08-24
Zoetis 09-24

7HO17131 COOKIECUTTER HAYK HADES-ET

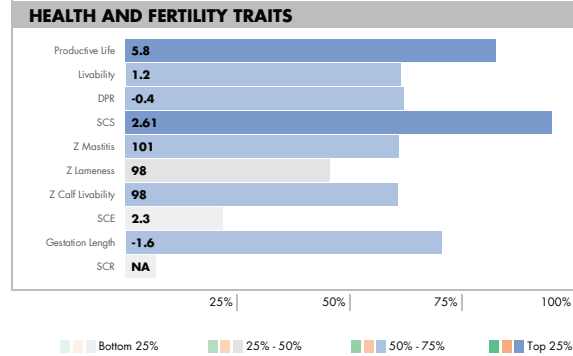
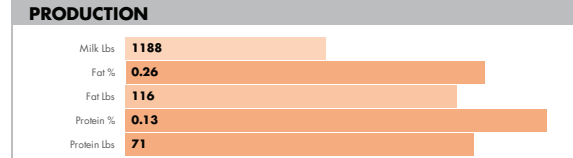
HAYK X HIGHJUMP X BIG AL TR TP TM TC TY TV TL TD TE HH5C HH1T HH2T HH3T HH4T HH6T

HOLSTEIN NASIS: 80FFVRO BETA CASEIN: A1A2 \$28 RRP \$65 SEXED
 BPI: 481 OT: 98 MS: 104 MILKING SPEED: 101 TEMP: 103

DAM: COOKIECUTTER HJMP HAUISE-ET

MGD: COOKIECUTTER AL HAUSEN-ET VG-88

3-01 3X 310D 12819 KGM 5.6% 718 KGF 3.8% 482 KGP



PHYSICAL TRAIT EVALUATION

CDCB/HA Genetic Eval. 08-24

0 dtrs. 0 herds
78% Rel.

PTAT: 1.42 UDC: 1.64 FLC: 0.30 TPI: 3167

Stature	Short	0.80	Tall
Strength	Frail	0.40	Strong
Body Depth	Shallow	0.44	Deep
Dairy Form	Tight Ribbed	1.23	Open Ribbed
Rump Width	Narrow	0.13	Wide
Rump Angle	High Pins	-0.01	Sloped
Rear Leg (side view)	Posty	-0.06	Sickled
Rear Leg (rear view)	Hock-in	0.01	Straight
Foot Angle	Low Angle	0.52	Steep Angle
Feet & Leg Score	Low	0.56	High
Fore Udder	Loose	2.10	Strong
Rear Udder Height	Low	2.30	High
Rear Udder Width	Narrow	2.26	Wide
Udder Cleft	Weak	0.29	Strong
Udder Depth	Deep	1.15	Shallow
Front Teat Placement	Wide	0.25	Close
Rear Teat Placement	Wide	0.32	Close
Teat Length	Short	0.02	Long



GUSA 08-24
CDN Genomic
Eval. 08-24
Zoetis 09-24

HANX-P



7HO16387 SIEMERS HANAN HANX-P-ET A2A2

HANANS X LUSTER-P X DOC TR PC TC TY TV TL TD TE HH1T HH2T HH3T HH4T HH5T HH6T

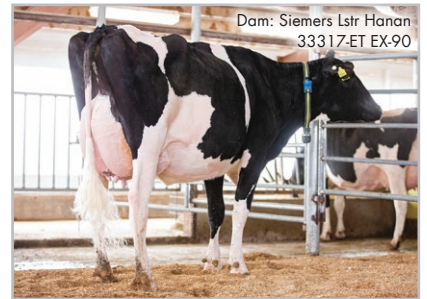
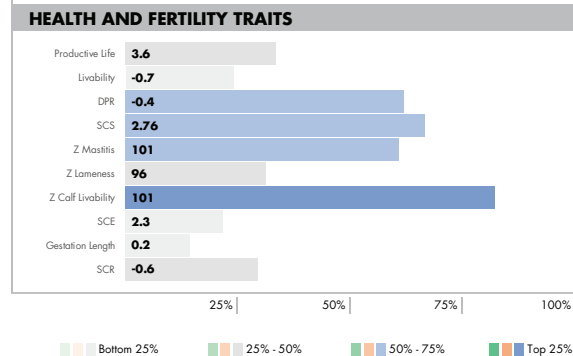
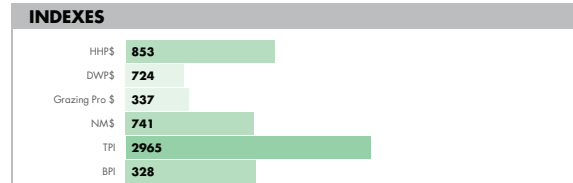
HOLSTEIN NASIS: 80FFUET BETA CASEIN: A2A2 \$24 RRP \$55 SEXED
 BPI: 328 OT: 105 MS: 109 MILKING SPEED: 101 TEMP: 102

DAM: SIEMERS LSTR HANAN 33317-ET EX-90

3-03 2X 305D 16084 KGM 3.9% 622 KGF 3.3% 531 KGP

MGD: SIEMERS DOC HANAN 28286-ET EX-92

3-05 2X 365D 18289 KGM 4.3% 782 KGF 3.4% 614 KGP



PHYSICAL TRAIT EVALUATION

CDCB/HA Genetic Eval. 08-24

0 dtrs. 0 herds
81% Rel.

PTAT: 3.42 UDC: 2.57 FLC: 1.81 TPI: 2965

Stature	Short	3.22	Tall
Strength	Frail	1.27	Strong
Body Depth	Shallow	2.49	Deep
Dairy Form	Tight Ribbed	3.51	Open Ribbed
Rump Width	Narrow	3.69	Wide
Rump Angle	High Pins	-0.74	Sloped
Rear Leg (side view)	Posty	1.17	Sickled
Rear Leg (rear view)	Hock-in	2.49	Straight
Foot Angle	Low Angle	2.17	Steep Angle
Feet & Leg Score	Low	2.36	High
Fore Udder	Loose	3.03	Strong
Rear Udder Height	Low	4.33	High
Rear Udder Width	Narrow	3.94	Wide
Udder Cleft	Weak	2.29	Strong
Udder Depth	Deep	1.77	Shallow
Front Teat Placement	Wide	2.29	Close
Rear Teat Placement	Wide	2.51	Close
Teat Length	Short	0.72	Long



GUSA 08-24
CDN Genomic
Eval. 08-24
Zoetis 09-24

7HO15966 LA-CA-DE-LE T ISAAC 8731-ET **A2A2**

TAOS X LANGLEY X DUKE TR TP TC TY TV TL TD TE HH1T HH2T HH3T HH4T HH5T HH6T

HOLSTEIN NANSIS: 80FTTU5 BETA CASEIN: A2A2 \$30 RRP \$60 SEXED

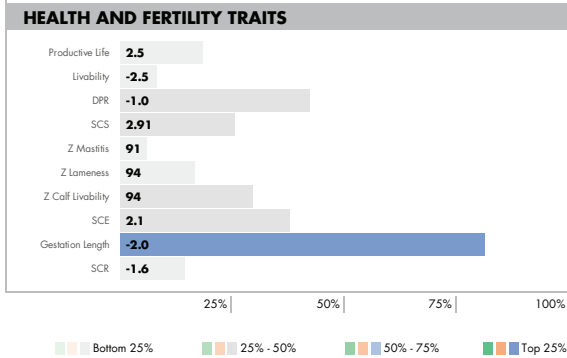
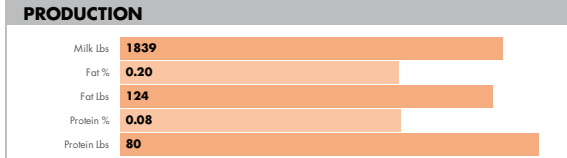
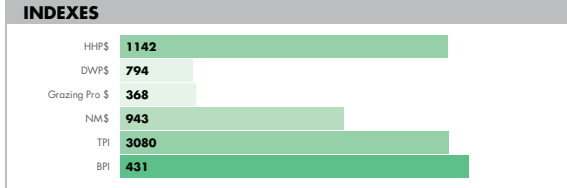
BPI: 431 OT: 100 MS: 103 MILKING SPEED: 103 TEMP: 101

DAM: LA-CA-DE-LE ISABEL 7674-ET VG-85

2:07 3X 365D 12728 KGM 4.4% 562 KGF 3.3% 424 KGP

MGD: LA-CA-DE-LE DUKE INGRID GP-83

3:05 3X 330D 13617 KGM 3.4% 464 KGF 3.3% 448 KGP



Paternal sisters:
Trent-Way
Taos Daughters

PHYSICAL TRAIT EVALUATION

CDCB/HA Genetic Eval. 08-24

0 dtrs. 0 herds
81% Rel.

PTAT: 1.88 UDC: 1.47 FLC: 0.47 TPI: 3080

Stature	Short	2.43	Tall
Strength	Frail	1.52	Strong
Body Depth	Shallow	1.12	Deep
Dairy Form	Tight Ribbed	0.86	Open Ribbed
Rump Width	Narrow	2.09	Wide
Rump Angle	High Pins	-0.13	Sloped
Rear Leg (side view)	Posty	0.90	Sickled
Rear Leg (rear view)	Hock-in	1.01	Straight
Foot Angle	Low Angle	0.86	Steep Angle
Feet & Leg Score	Low	0.96	High
Fore Udder	Loose	1.90	Strong
Rear Udder Height	Low	1.80	High
Rear Udder Width	Narrow	2.36	Wide
Udder Cleft	Weak	1.60	Strong
Udder Depth	Deep	1.88	Shallow
Front Teat Placement	Wide	1.44	Close
Rear Teat Placement	Wide	1.70	Close
Teat Length	Short	0.33	Long



GUSA 08-24
CDN Genomic
Eval. 08-24
Zoetis 09-24

KNOWLESS

250HO16525 DULET KNOWLESS

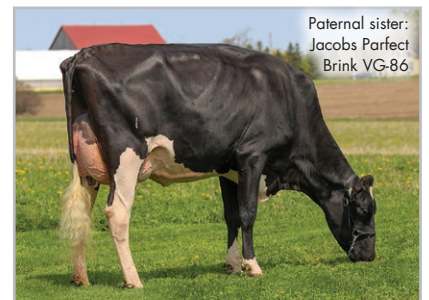
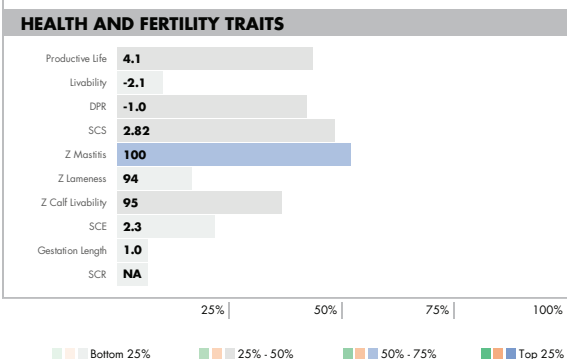
PERFECT X DELTA-LAMBDA X DIAMOND TR TP TC TY TV TL TD TE HH1T HH2T HH3T HH4T HH5T HH6T

HOLSTEIN NANSIS: 70FUU73 BETA CASEIN: A1A2 \$40 RRP \$75 SEXED

BPI: 282 OT: 105 MS: 108 MILKING SPEED: 101 TEMP: 102

DAM: DULET D-LAMBDA KATRINA VG-87

MGD: DULET DIAMOND KARVY



Paternal sister:
Jacobs Perfect
Brink VG-86

PHYSICAL TRAIT EVALUATION

CDCB/HA Genetic Eval. 08-24

0 dtrs. 0 herds
80% Rel.

PTAT: 2.67 UDC: 2.42 FLC: 1.25 TPI: 2951

Stature	Short	1.63	Tall
Strength	Frail	1.32	Strong
Body Depth	Shallow	1.25	Deep
Dairy Form	Tight Ribbed	1.49	Open Ribbed
Rump Width	Narrow	2.46	Wide
Rump Angle	High Pins	0.29	Sloped
Rear Leg (side view)	Posty	-0.45	Sickled
Rear Leg (rear view)	Hock-in	2.41	Straight
Foot Angle	Low Angle	1.57	Steep Angle
Feet & Leg Score	Low	1.24	High
Fore Udder	Loose	2.54	Strong
Rear Udder Height	Low	3.45	High
Rear Udder Width	Narrow	3.88	Wide
Udder Cleft	Weak	1.73	Strong
Udder Depth	Deep	1.43	Shallow
Front Teat Placement	Wide	0.93	Close
Rear Teat Placement	Wide	1.63	Close
Teat Length	Short	0.58	Long



GUSA 08-24
CDN Genomic
Eval. 08-24
Zoetis 09-24

LUDLOW



410 BPI

250HO15792 HOUIN S-S-I AHEAD LUDLOW-ET **A2A2**

AHEAD X LEGACY X SUPERSRING TR TP TC TY TV TL TD TE HH1T HH2T HH3T HH4T HH5T HH6T

HOLSTEIN NASIS: 80FTU6 BETA CASEIN: A2A2 \$18 RRP

BPI: 410 OT: 99 MS: 98 MILKING SPEED: 101 TEMP: 100

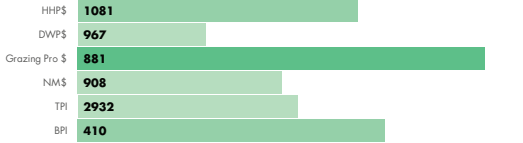
DAM: HOUIN S-S-I 16 359-ET

2-00 3X 305D 11494 KGM 4.2% 484 KGF 3.6% 419 KGP

MGD: BADGER S-S-I 7467 16-ET GP-83

2-00 3X 305D 16316 KGM 3.8% 622 KGF 3.2% 517 KGP

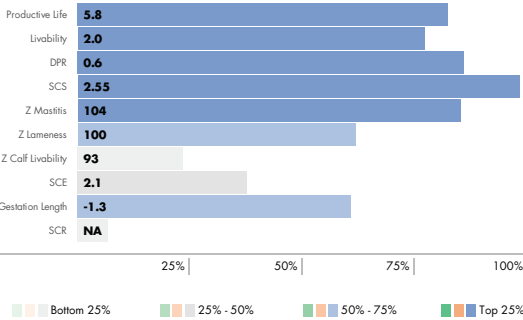
INDEXES



PRODUCTION



HEALTH AND FERTILITY TRAITS



4th dam:
Plain-Knoll
Mogul
Mariah
VG-88

PHYSICAL TRAIT EVALUATION

CDCB/HA Genetic Eval. 08-24

0 dtrs. 0 herds
81% Rel.

PTAT: 0.66 UDC: 0.59 FLC: -0.35 TPI: 2932

Stature	Short	1.15	Tall
Strength	Frail	0.70	Strong
Body Depth	Shallow	0.26	Deep
Dairy Form	Tight Ribbed	0.15	Open Ribbed
Rump Width	Narrow	1.30	Wide
Rump Angle	High Pins	0.44	Sloped
Rear Leg (side view)	Posty	0.73	Sickled
Rear Leg (rear view)	Hock-in	-0.13	Straight
Foot Angle	Low Angle	0.11	Steep Angle
Feet & Leg Score	Low	-0.06	High
Fore Udder	Loose	1.17	Strong
Rear Udder Height	Low	0.59	High
Rear Udder Width	Narrow	0.72	Wide
Udder Cleft	Weak	0.54	Strong
Udder Depth	Deep	1.20	Shallow
Front Teat Placement	Wide	0.36	Close
Rear Teat Placement	Wide	0.53	Close
Teat Length	Short	-0.86	Long



GUSA 08-24
CDN Genomic
Eval. 08-24
Zoetis 09-24

MAX



500 BPI

250HO16310 S-S-I REGAL MAX-ET **A2A2**

REGAL X BIG AL X RESOLVE TR TP TC TY TV TL TD TE HH1T HH2T HH3T HH4T HH5T HH6T

HOLSTEIN NASIS: 80FFUHD BETA CASEIN: A2A2 \$16 RRP

BPI: 500 OT: 98 MS: 100 MILKING SPEED: 101 TEMP: 100

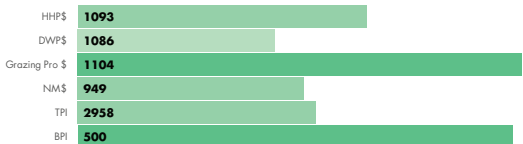
DAM: PLAIN-KNOLL BIG AL 2880 GP-82

2-00 3X 305D 11344 KGM 4.1% 460 KGF 3.3% 373 KGP

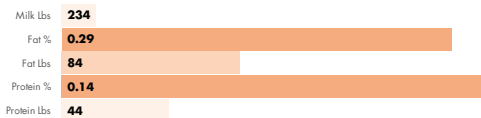
MGD: PLAIN-KNOLL RESOLVE 1893-ET EX-90

4-09 3X 293D 16284 KGM 4.1% 660 KGF 3.4% 553 KGP

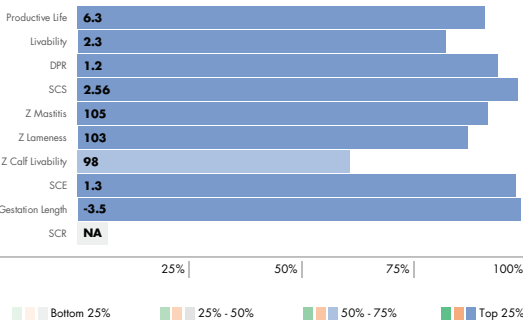
INDEXES



PRODUCTION



HEALTH AND FERTILITY TRAITS



Sire: T-Spruce Renegade Regal-ET

Dam:
Plain-Knoll
Big Al 2880
GP-82

PHYSICAL TRAIT EVALUATION

CDCB/HA Genetic Eval. 08-24

0 dtrs. 0 herds
81% Rel.

PTAT: 1.01 UDC: 1.63 FLC: 0.15 TPI: 2958

Stature	Short	-0.31	Tall
Strength	Frail	-0.21	Strong
Body Depth	Shallow	-0.75	Deep
Dairy Form	Tight Ribbed	-0.44	Open Ribbed
Rump Width	Narrow	-0.61	Wide
Rump Angle	High Pins	-0.09	Sloped
Rear Leg (side view)	Posty	0.07	Sickled
Rear Leg (rear view)	Hock-in	0.11	Straight
Foot Angle	Low Angle	0.49	Steep Angle
Feet & Leg Score	Low	0.03	High
Fore Udder	Loose	2.38	Strong
Rear Udder Height	Low	1.96	High
Rear Udder Width	Narrow	1.27	Wide
Udder Cleft	Weak	-0.06	Strong
Udder Depth	Deep	1.46	Shallow
Front Teat Placement	Wide	0.52	Close
Rear Teat Placement	Wide	0.30	Close
Teat Length	Short	-1.03	Long



GUSA 08-24
CDN Genomic
Eval. 08-24
Zoetis 09-24

MICAH



250HO16561 **TERRA-LINDA MICAH-ET A2A2**

PERFECT X EXCALIBUR X IMAX TR TP TC TY TV TL TD TE HH1T HH2T HH3T HH4T HH5T HH6T

HOLSTEIN NANSIS: 80FUHZ BETA CASEIN: A2A2 \$32 RRP \$65 SEXED

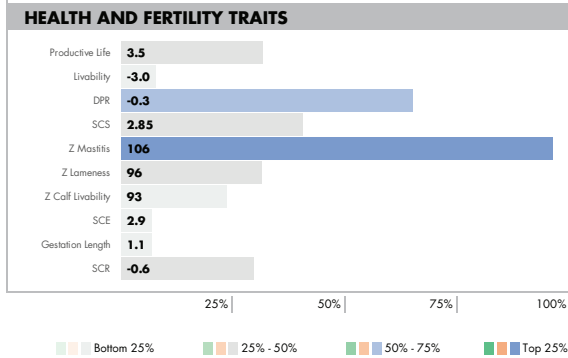
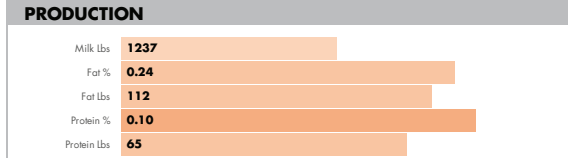
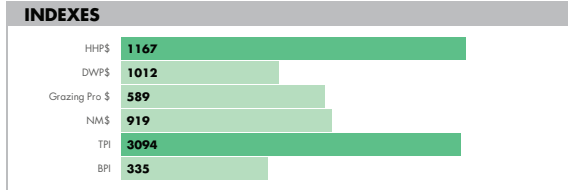
BPI: 335 OT: 101 MS: 102 MILKING SPEED: 103 TEMP: 101

DAM: TERRA-LINDA EXCALIBUR MAY VG-88

3-02 3X 365D 19151 KGM 4.2% 806 KGF 3.0% 583 KGP

MGD: TERRA-LINDA IMAX 428 VG-89

5-05 3X 305D 18312 KGM 4.6% 848 KGF 3.0% 554 KGP



PHYSICAL TRAIT EVALUATION

CDCB/HA Genetic Eval. 08-24
0 dtrs. 0 herds
80% Rel.

PTAT: 1.98 UDC: 1.79 FLC: 1.80 TPI: 3094

Stature	Short	1.29	Tall
Strength	Frail	1.33	Strong
Body Depth	Shallow	1.04	Deep
Dairy Form	Tight Ribbed	0.82	Open Ribbed
Rump Width	Narrow	2.94	Wide
Rump Angle	High Pins	-0.70	Sloped
Rear Leg (side view)	Posty	-0.16	Sickled
Rear Leg (rear view)	Hock-in	2.94	Straight
Foot Angle	Low Angle	1.89	Steep Angle
Feet & Leg Score	Low	1.65	High
Fore Udder	Loose	1.75	Strong
Rear Udder Height	Low	2.80	High
Rear Udder Width	Narrow	2.99	Wide
Udder Cleft	Weak	1.39	Strong
Udder Depth	Deep	0.74	Shallow
Front Teat Placement	Wide	0.57	Close
Rear Teat Placement	Wide	1.36	Close
Teat Length	Short	0.34	Long



GUSA 08-24
CDN Genomic
Eval. 08-24
Zoetis 09-24

MUSCLES



250HO15235 **OCD FORTE MUSCLES-ET A2A2**

FORTE X BURLEY X DELTA TR TP TC TY TV TL TD TE HH1T HH2T HH3T HH4T HH5T HH6T

HOLSTEIN NANSIS: 80FFSJF BETA CASEIN: A2A2 \$12 RRP

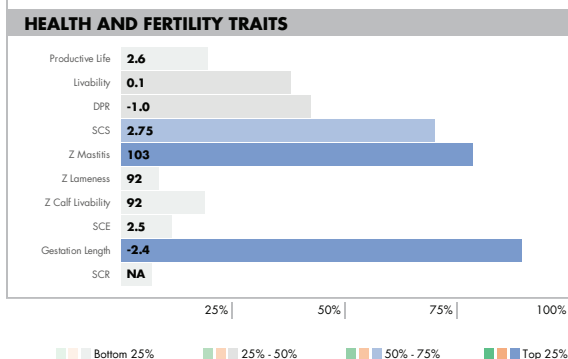
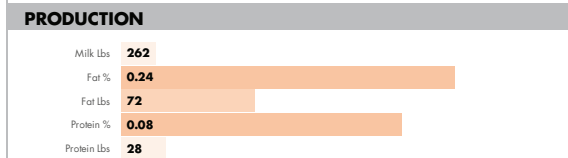
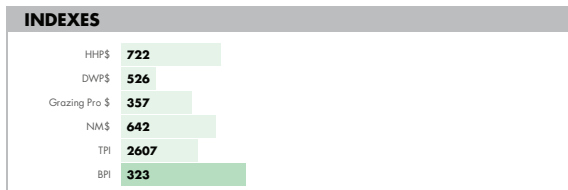
BPI: 323 OT: 96 MS: 98 MILKING SPEED: 102 TEMP: 100

DAM: OCD BURLEY MENNA 41515-ET VG-86

2-02 3X 345D 14946 KGM 4.5% 677 KGF 3.4% 506 KGP

MGD: OCD DELTA MENNA 34187-ET VG-85

2-06 3X 365D 14011 KGM 3.7% 523 KGF 3.2% 454 KGP



PHYSICAL TRAIT EVALUATION

CDCB/HA Genetic Eval. 08-24
287 dtrs. 50 herds
97% Rel.

PTAT: 1.10 UDC: 1.38 FLC: 0.07 TPI: 2607

Stature	Short	1.43	Tall
Strength	Frail	-0.72	Strong
Body Depth	Shallow	-0.11	Deep
Dairy Form	Tight Ribbed	1.22	Open Ribbed
Rump Width	Narrow	0.42	Wide
Rump Angle	High Pins	-0.54	Sloped
Rear Leg (side view)	Posty	0.79	Sickled
Rear Leg (rear view)	Hock-in	-0.21	Straight
Foot Angle	Low Angle	1.05	Steep Angle
Feet & Leg Score	Low	0.51	High
Fore Udder	Loose	2.09	Strong
Rear Udder Height	Low	2.04	High
Rear Udder Width	Narrow	0.37	Wide
Udder Cleft	Weak	1.01	Strong
Udder Depth	Deep	2.67	Shallow
Front Teat Placement	Wide	0.46	Close
Rear Teat Placement	Wide	0.63	Close
Teat Length	Short	-1.12	Long



GUSA 08-24
CDN Genomic
Eval. 08-24
Zoetis 09-24

POROTO



523 BPI

7HO16894 S-S-I SIEMERS OD POROTO-ET **A2A2**

OVERDO X PERFECT X RIVETING TR TP TM TC TY TV TL TD TE HH1T HH2T HH3T HH4T HH5T HH6T

HOLSTEIN NASIS: 80FFVM1 BETA CASEIN: A2A2 \$32 RRP \$80 SEXED

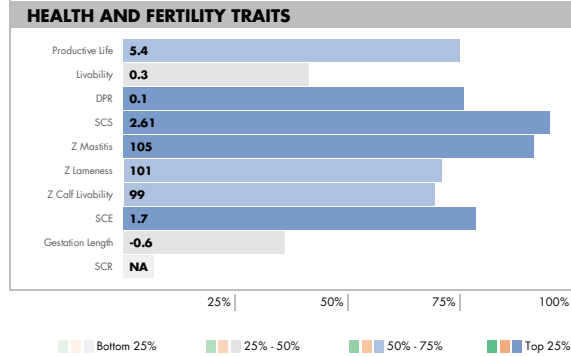
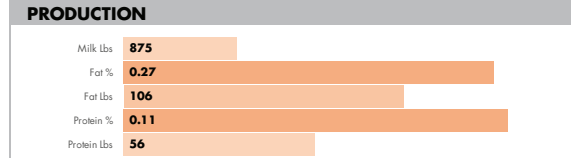
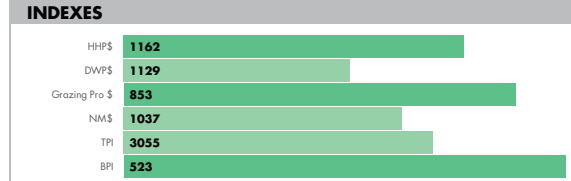
BPI: 523 OT: 104 MS: 108 MILKING SPEED: 100 TEMP: 103

DAM: BADGER S-S-I VF 60564-ET GP-83

1-11 3X 308D 12406 KGM 4.5% 564 KGF 3.2% 396 KGP

MGD: HORSENS S-S-I 3192 16215-ET

3-04 3X 303D 14057 KGM 4.3% 610 KGF 3.0% 424 KGP



PHYSICAL TRAIT EVALUATION

CDCB/HA Genetic Eval. 08-24

0 dtrs. 0 herds
79% Rel.

PTAT: 0.98 UDC: 1.96 FLC: 0.23 TPI: 3055

Stature	Short	-0.04	Tall
Strength	Frail	-0.09	Strong
Body Depth	Shallow	-0.21	Deep
Dairy Form	Tight Ribbed	0.76	Open Ribbed
Rump Width	Narrow	0.93	Wide
Rump Angle	High Pins	0.94	Sloped
Rear Leg (side view)	Posty	-0.29	Sickled
Rear Leg (rear view)	Hock-in	0.46	Straight
Foot Angle	Low Angle	0.37	Steep Angle
Feet & Leg Score	Low	0.12	High
Fore Udder	Loose	2.02	Strong
Rear Udder Height	Low	2.29	High
Rear Udder Width	Narrow	2.41	Wide
Udder Cleft	Weak	0.99	Strong
Udder Depth	Deep	1.22	Shallow
Front Teat Placement	Wide	0.98	Close
Rear Teat Placement	Wide	1.26	Close
Teat Length	Short	-0.56	Long



GUSA 08-24
CDN Genomic
Eval. 08-24
Zoetis 09-24

PYLER



401 BPI

7HO16119 SIEMERS ASTD PYLER 34943-ET **A2A2**

AUSTAD X LEGACY X DELTA-LAMBDA TR TP TC TY TV TL TD TE HH1T HH2T HH3T HH4T HH5T HH6T

HOLSTEIN NASIS: 80FFUCM BETA CASEIN: A2A2 \$36 RRP \$70 SEXED

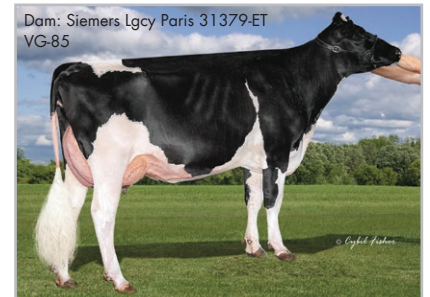
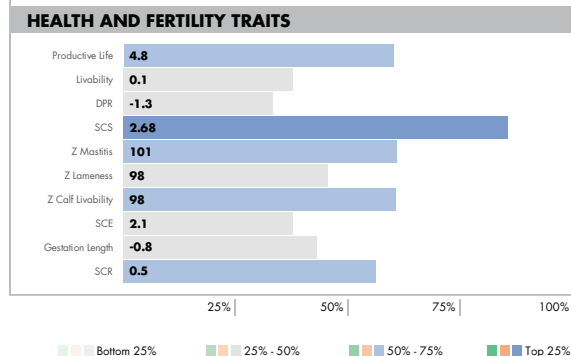
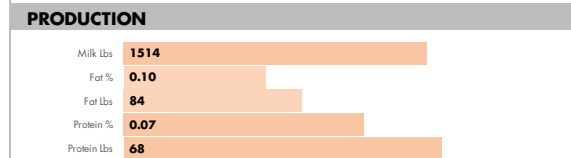
BPI: 401 OT: 108 MS: 106 MILKING SPEED: 99 TEMP: 101

DAM: SIEMERS LGCY PARIS 31379-ET VG-85

4-02 3X 300D 13880 KGM 4.9% 685 KGF 3.5% 489 KGP

MGD: SIEMERS LMDA PARIS 27856-ET EX-91

3-05 2X 365D 17500 KGM 4.1% 716 KGF 3.5% 618 KGP



PHYSICAL TRAIT EVALUATION

CDCB/HA Genetic Eval. 08-24

0 dtrs. 0 herds
81% Rel.

PTAT: 1.87 UDC: 1.61 FLC: 0.57 TPI: 2981

Stature	Short	1.26	Tall
Strength	Frail	0.73	Strong
Body Depth	Shallow	0.99	Deep
Dairy Form	Tight Ribbed	2.08	Open Ribbed
Rump Width	Narrow	1.71	Wide
Rump Angle	High Pins	1.04	Sloped
Rear Leg (side view)	Posty	0.14	Sickled
Rear Leg (rear view)	Hock-in	0.70	Straight
Foot Angle	Low Angle	1.00	Steep Angle
Feet & Leg Score	Low	0.80	High
Fore Udder	Loose	2.02	Strong
Rear Udder Height	Low	2.28	High
Rear Udder Width	Narrow	2.95	Wide
Udder Cleft	Weak	0.44	Strong
Udder Depth	Deep	0.77	Shallow
Front Teat Placement	Wide	0.74	Close
Rear Teat Placement	Wide	0.56	Close
Teat Length	Short	0.35	Long



GUSA 08-24
CDN Genomic
Eval. 08-24
Zoetis 09-24

RAGER-RED



7H012344 RI-VAL-RE RAGER-RED-ET **A2A2**

RELIEF P X OBSERVER X ADVENT-RED TP TM TC TY TV TL TD TE HH1T HH2T HH3T HH4T HH5T HH6T

HOLSTEIN NASIS: 80FFKC5 BETA CASEIN: A2A2 \$28 RRP \$65 SEXED

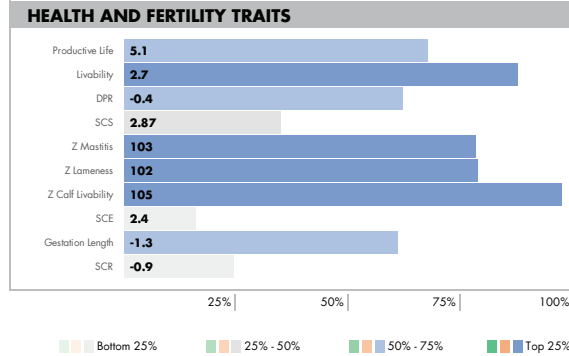
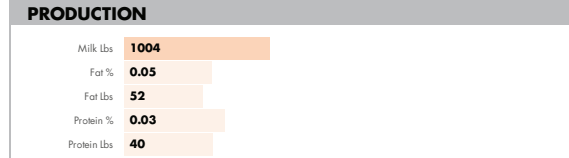
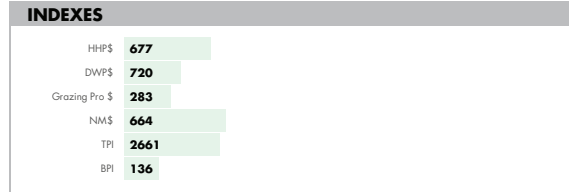
BPI: 136 OT: 106 MS: 100 MILKING SPEED: 97 TEMP: 98

DAM: RI-VAL-RE OBSVRV SALSA-ET VG-88

4-05 2X 297D 13173 KGM 5.3% 700 KGF 3.1% 414 KGP

MGD: RI-VAL-RE ADV WIN-GO-RED-ET EX-90

4-00 2X 305D 13490 KGM 4.0% 543 KGF 3.1% 412 KGP



Everlane Rager-Red daughters

PHYSICAL TRAIT EVALUATION

CDCB/HA Genetic Eval. 08-24

11998 dtrs. 3802 herds
99% Rel.

PTAT: 1.67 UDC: 0.70 FLC: 1.31 TPI: 2661

Stature	Short	1.01	Tall
Strength	Frail	1.37	Strong
Body Depth	Shallow	1.66	Deep
Dairy Form	Tight Ribbed	1.26	Open Ribbed
Rump Width	Narrow	1.03	Wide
Rump Angle	High Pins	0.92	Sloped
Rear Leg (side view)	Posty	1.32	Sickled
Rear Leg (rear view)	Hock-in	1.23	Straight
Foot Angle	Low Angle	1.23	Steep Angle
Feet & Leg Score	Low	1.54	High
Fore Udder	Loose	1.24	Strong
Rear Udder Height	Low	0.80	High
Rear Udder Width	Narrow	0.92	Wide
Udder Cleft	Weak	1.58	Strong
Udder Depth	Deep	0.41	Shallow
Front Teat Placement	Wide	0.99	Close
Rear Teat Placement	Wide	2.23	Close
Teat Length	Short	-0.65	Long



IB/MACE-G 08-24
CDN Genomic
Eval. 08-24
Zoetis 09-24

REWARD-RED



7H016303 TRENT-WAY REWARD-RED-ET

TROJAN*RC X SIMPLICITY-P*RC X DUKE TP TC TY TV TL TD TE HH5C HH1T HH2T HH3T HH4T HH6T

HOLSTEIN NASIS: 80FFUJA BETA CASEIN: A1A2 \$34 RRP \$65 SEXED

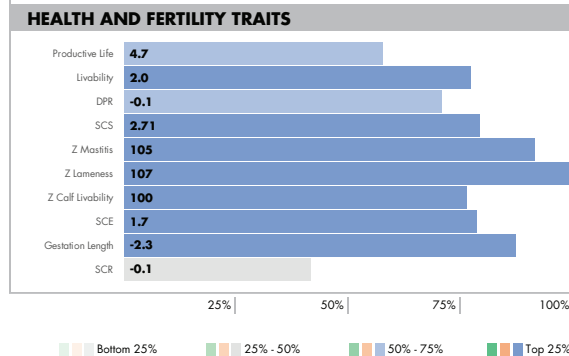
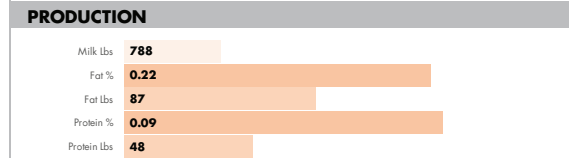
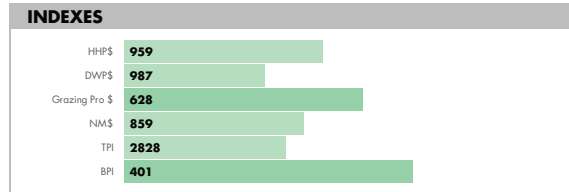
BPI: 401 OT: 101 MS: 103 MILKING SPEED: 101 TEMP: 102

DAM: TRENT-WAY-JS REDZONE-RED-ET EX-91

4-00 2X 365D 17273 KGM 4.3% 749 KGF 3.1% 539 KGP

MGD: TRENT-WAY-JS RONA-ET EX-91

6-06 2X 365D 19323 KGM 3.9% 752 KGF 3.1% 602 KGP



PHYSICAL TRAIT EVALUATION

CDCB/HA Genetic Eval. 08-24

0 dtrs. 0 herds
81% Rel.

PTAT: 1.17 UDC: 1.25 FLC: -0.27 TPI: 2828

Stature	Short	0.65	Tall
Strength	Frail	0.26	Strong
Body Depth	Shallow	0.24	Deep
Dairy Form	Tight Ribbed	0.61	Open Ribbed
Rump Width	Narrow	0.18	Wide
Rump Angle	High Pins	-0.64	Sloped
Rear Leg (side view)	Posty	1.29	Sickled
Rear Leg (rear view)	Hock-in	-0.65	Straight
Foot Angle	Low Angle	0.44	Steep Angle
Feet & Leg Score	Low	0.05	High
Fore Udder	Loose	2.03	Strong
Rear Udder Height	Low	1.29	High
Rear Udder Width	Narrow	1.07	Wide
Udder Cleft	Weak	0.35	Strong
Udder Depth	Deep	1.63	Shallow
Front Teat Placement	Wide	0.30	Close
Rear Teat Placement	Wide	0.35	Close
Teat Length	Short	0.07	Long



GUSA 08-24
CDN Genomic
Eval. 08-24
Zoetis 09-24

ROADSTER



HOLSTEIN

250HO15026 BERRYRIDGE SSI ROADSTER-ET

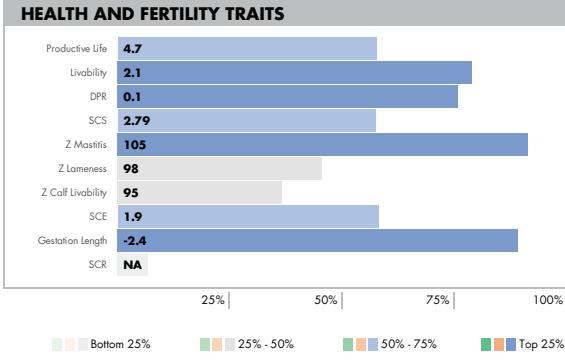
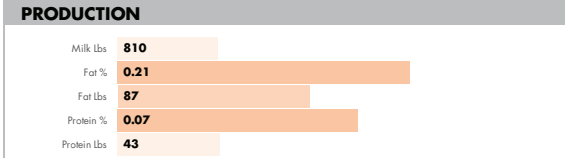
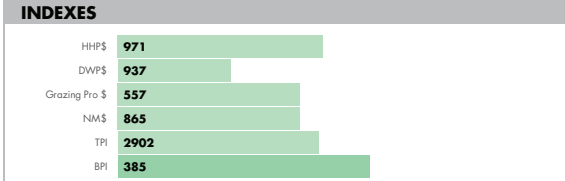
RIVETING X HIPHOP X RUBICON TR TP TM TC TY TV TL TD TE HH1T HH2T HH3T HH4T HH5T HH6T

HOLSTEIN NASIS: 80FFSKP BETA CASEIN: A1A2 \$28 RRP \$75 SEXED

BPI: 385 OT: 100 MS: 103 MILKING SPEED: 102 TEMP: 101

DAM: S-S-I BR 11596 3147-ET

MGD: S-S-I RUBCON 10721 11596-ET



PHYSICAL TRAIT EVALUATION

CDCB/HA Genetic Eval. 08-24
97 dtrs. 48 herds
92% Rel.

PTAT: 1.70 UDC: 1.61 FLC: -0.10 TPI: 2902

Stature	Short	1.59	Tall
Strength	Frail	0.99	Strong
Body Depth	Shallow	1.05	Deep
Dairy Form	Tight Ribbed	1.17	Open Ribbed
Rump Width	Narrow	1.49	Wide
Rump Angle	High Pins	1.76	Sloped
Rear Leg (side view)	Posty	1.26	Sickled
Rear Leg (rear view)	Hock-in	0.32	Straight
Foot Angle	Low Angle	0.06	Steep Angle
Feet & Leg Score	Low	0.28	High
Fore Udder	Loose	1.66	Strong
Rear Udder Height	Low	2.29	High
Rear Udder Width	Narrow	2.21	Wide
Udder Cleft	Weak	1.26	Strong
Udder Depth	Deep	1.65	Shallow
Front Teat Placement	Wide	1.22	Close
Rear Teat Placement	Wide	1.74	Close
Teat Length	Short	-0.58	Long



IB/MACE-G 08-24
CDN Genomic
Eval. 08-24
Zoetis 09-24

RONALD*RC



HOLSTEIN

250HO14465 TRENT-WAY-JS RONALD-ET

SALVATORE RC X SILVER X NUMERO UNO RC TP TC TY TV TL TD TE HH1T HH2T HH3T HH4T HH5T HH6T

HOLSTEIN NASIS: 80FFPFE BETA CASEIN: A1A1 \$22 RRP

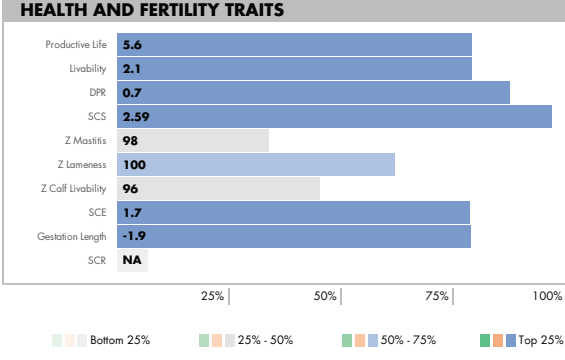
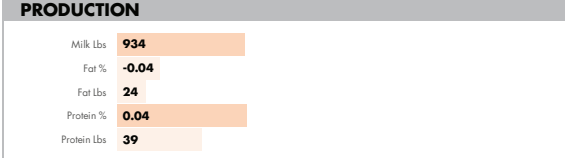
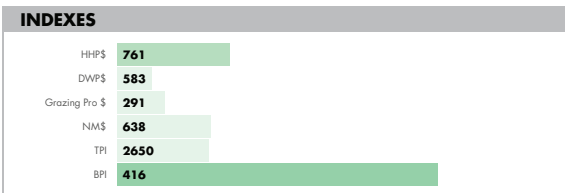
BPI: 416 OT: 103 MS: 105 MILKING SPEED: 103 TEMP: 102

DAM: Y-WHISPER SILVER ROYALTY-ET EX-94

8-00 2X 299D 11376 KGM 4.8% 547 KGF 3.1% 348 KGP

MGD: MORNINGVIEW UNO REGINA-ET EX-91

8-00 2X 308D 15141 KGM 4.6% 702 KGF 3.2% 488 KGP



PHYSICAL TRAIT EVALUATION

CDCB/HA Genetic Eval. 08-24
4899 dtrs. 1637 herds
98% Rel.

PTAT: 1.52 UDC: 1.65 FLC: 1.16 TPI: 2650

Stature	Short	1.52	Tall
Strength	Frail	-0.41	Strong
Body Depth	Shallow	-0.09	Deep
Dairy Form	Tight Ribbed	0.90	Open Ribbed
Rump Width	Narrow	0.10	Wide
Rump Angle	High Pins	0.45	Sloped
Rear Leg (side view)	Posty	-0.90	Sickled
Rear Leg (rear view)	Hock-in	1.78	Straight
Foot Angle	Low Angle	1.93	Steep Angle
Feet & Leg Score	Low	1.27	High
Fore Udder	Loose	2.15	Strong
Rear Udder Height	Low	2.86	High
Rear Udder Width	Narrow	0.86	Wide
Udder Cleft	Weak	-0.09	Strong
Udder Depth	Deep	2.72	Shallow
Front Teat Placement	Wide	1.45	Close
Rear Teat Placement	Wide	0.30	Close
Teat Length	Short	-0.85	Long



IB/MACE-G 08-24
CDN Genomic
Eval. 08-24
Zoetis 09-24

RUPERT

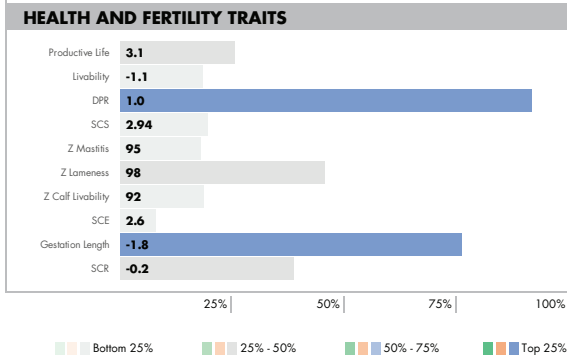
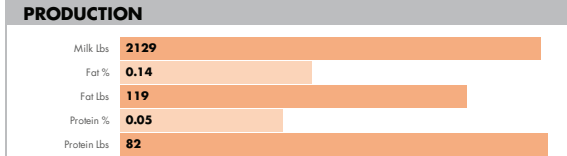
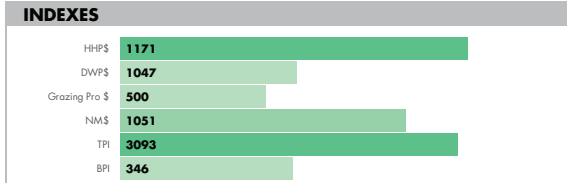


7H014985 S-S-I RENEGADE RUPERT-ET **A2A2**

RENEGADE X MATTERS X STOIC TR TP TM TC TY TV TL TD TE HH1T HH2T HH3T HH4T HH5T HH6T

HOLSTEIN NANSIS: 80FFSKN **BETA CASEIN: A2A2** \$40 RRP \$80 SEXED
BPI: 346 OT: 99 MS: 97 MILKING SPEED: 100 TEMP: 100

DAM: SEAGULL-BAY AN ALEXANDRA-ET VG-88
 2-01 2X 365D 11322 KGM 4.2% 478 KGF 3.4% 381 KGP
 MGD: NO-FLA STOIC ANNE 40873-ET VG-86
 3-05 3X 365D 14424 KGM 4.0% 579 KGF 3.3% 469 KGP



PHYSICAL TRAIT EVALUATION CDCB/HA Genetic Eval. 08-24
 289 dtrs. 80 herds 93% Rel.

PTAT: 1.07 UDC: 0.84 FLC: 0.69 TPI: 3093

Stature	Short	0.57	Tall
Strength	Frail	0.87	Strong
Body Depth	Shallow	0.45	Deep
Dairy Form	Tight Ribbed	0.44	Open Ribbed
Rump Width	Narrow	-0.49	Wide
Rump Angle	High Pins	-0.30	Sloped
Rear Leg (side view)	Posty	0.16	Sickled
Rear Leg (rear view)	Hock-in	1.54	Straight
Foot Angle	Low Angle	0.73	Steep Angle
Feet & Leg Score	Low	0.54	High
Fore Udder	Loose	1.05	Strong
Rear Udder Height	Low	1.47	High
Rear Udder Width	Narrow	1.64	Wide
Udder Cleft	Weak	0.31	Strong
Udder Depth	Deep	0.41	Shallow
Front Teat Placement	Wide	-0.12	Close
Rear Teat Placement	Wide	0.37	Close
Teat Length	Short	1.65	Long



IB/MACE-G 08-24
 CDN Genomic
 Eval. 08-24
 Zoetis 09-24

SUNDOWN

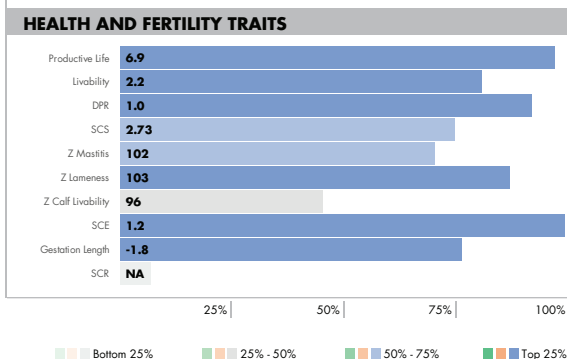
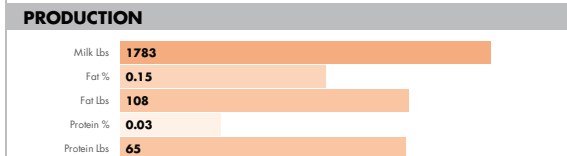


14H016834 MATCREST FRSBITE SUNDOWN-ET **A2A2**

FROST BITE X EINSTEIN X MEDLEY TR TP TM TC TY TV TL TD TE HH1T HH2T HH3T HH4T HH5T HH6T

HOLSTEIN NANSIS: 80FFVG7 **BETA CASEIN: A2A2** \$32 RRP \$65 SEXED
BPI: 385 OT: 99 MS: 101 MILKING SPEED: 101 TEMP: 98

DAM: MATCREST EINSTEIN 2284-ET
 2-06 2X 305D 13036 KGM 5.0% 645 KGF 3.3% 425 KGP
 MGD: DOUBLE-EAGLE MEDLY DAISY-ET



PHYSICAL TRAIT EVALUATION CDCB/HA Genetic Eval. 08-24
 0 dtrs. 0 herds 78% Rel.

PTAT: 0.20 UDC: 0.91 FLC: -0.60 TPI: 3099

Stature	Short	-0.83	Tall
Strength	Frail	-0.66	Strong
Body Depth	Shallow	-0.86	Deep
Dairy Form	Tight Ribbed	0.37	Open Ribbed
Rump Width	Narrow	0.34	Wide
Rump Angle	High Pins	0.53	Sloped
Rear Leg (side view)	Posty	0.57	Sickled
Rear Leg (rear view)	Hock-in	-1.21	Straight
Foot Angle	Low Angle	-1.09	Steep Angle
Feet & Leg Score	Low	-0.55	High
Fore Udder	Loose	0.43	Strong
Rear Udder Height	Low	1.10	High
Rear Udder Width	Narrow	1.77	Wide
Udder Cleft	Weak	0.06	Strong
Udder Depth	Deep	-0.14	Shallow
Front Teat Placement	Wide	0.23	Close
Rear Teat Placement	Wide	0.21	Close
Teat Length	Short	-0.67	Long



GUSA 08-24
 CDN Genomic
 Eval. 08-24
 Zoetis 09-24

TRIP-PP



403 BPI

HOLSTEIN

14HO16751 LARS-ACRES SSI C TRIP-PP-ET **A2A2**

CIRRUS-P X EXTRA-P X LEGACY TR PP TM TC TY TV TL TD TE HH1T HH2T HH3T HH4T HH5T HH6T

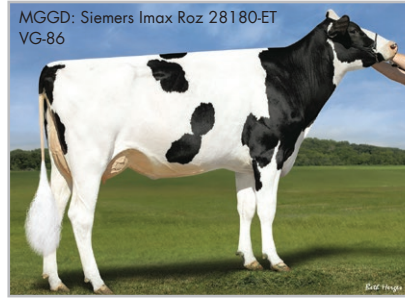
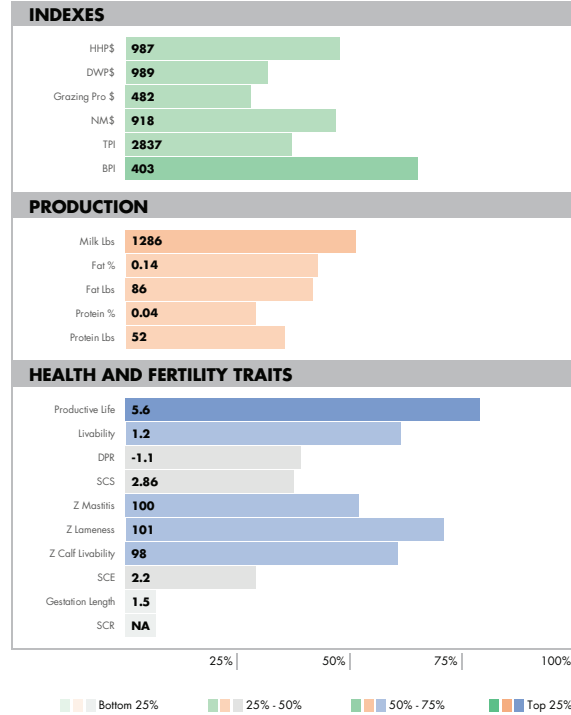
HOLSTEIN NASIS: 80FFVR7 BETA CASEIN: A2A2 \$32 RRP \$70 SEXED

BPI: 403 OT: 101 MS: 101 MILKING SPEED: 101 TEMP: 99

DAM: LARS-ACRES S-SI 25766-ET

MGD: S-SI LA 28180 22888-ET VG-85

4-02 3X 341D 12247 KGM 5.2% 636 KGF 3.6% 446 KGP



PHYSICAL TRAIT EVALUATION

CDCB/HA Genetic Eval. 08-24
0 dtrs. 0 herds
78% Rel.

PTAT: 0.70 UDC: 1.05 FLC: 0.31 TPI: 2837

Stature	Short	-0.15	Tall
Strength	Frail	-0.12	Strong
Body Depth	Shallow	-0.18	Deep
Dairy Form	Tight Ribbed	0.66	Open Ribbed
Rump Width	Narrow	1.33	Wide
Rump Angle	High Pins	0.41	Sloped
Rear Leg (side view)	Posty	0.66	Sickled
Rear Leg (rear view)	Hock-in	0.44	Straight
Foot Angle	Low Angle	-0.09	Steep Angle
Feet & Leg Score	Low	0.25	High
Fore Udder	Loose	0.71	Strong
Rear Udder Height	Low	1.06	High
Rear Udder Width	Narrow	1.43	Wide
Udder Cleft	Weak	1.18	Strong
Udder Depth	Deep	0.49	Shallow
Front Teat Placement	Wide	0.54	Close
Rear Teat Placement	Wide	1.36	Close
Teat Length	Short	-0.29	Long



GUSA 08-24
CDN Genomic
Eval. 08-24
Zoetis 09-24

WARRIOR-RED



7HO14477 MR BLONDIN WARRIOR-RED-ET

AVALANCHE* RC X DOORMAN X G W ATWOOD TP TC TY TV TL TD TE HH1T HH2T HH3T HH4T HH5T HH6T

HOLSTEIN NASIS: 80FFPF7 BETA CASEIN: A1A2 \$34 RRP \$75 SEXED

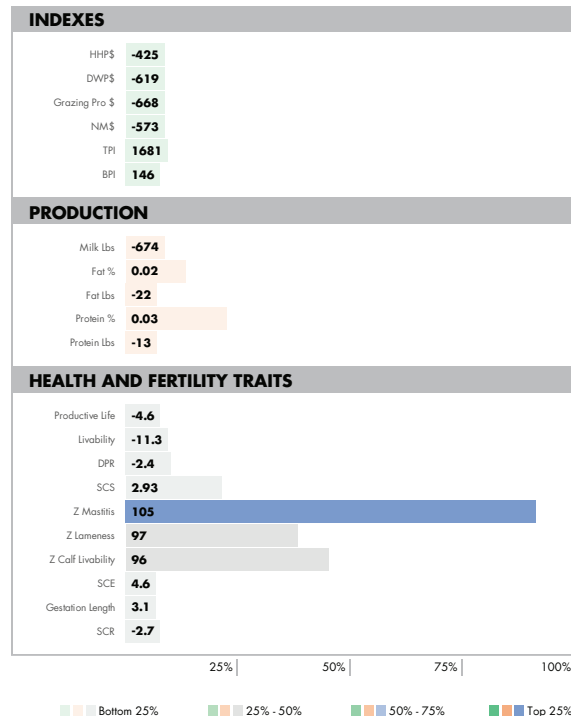
BPI: 146 OT: 104 MS: 106 MILKING SPEED: 100 TEMP: 104

DAM: TRIPLECROWN-JW DOOR WISP-ET VG-85

3-03 2X 365D 16142 KGM 4.0% 646 KGF 3.3% 534 KGP

MGD: BUTLerview ATW WHISKEY-ET VG-87

1-10 2X 352D 10759 KGM 3.6% 391 KGF 2.9% 312 KGP



PHYSICAL TRAIT EVALUATION

CDCB/HA Genetic Eval. 08-24
2345 dtrs. 921 herds
99% Rel.

PTAT: 2.76 UDC: 1.40 FLC: 1.16 TPI: 1681

Stature	Short	4.39	Tall
Strength	Frail	2.05	Strong
Body Depth	Shallow	2.40	Deep
Dairy Form	Tight Ribbed	1.01	Open Ribbed
Rump Width	Narrow	1.79	Wide
Rump Angle	High Pins	0.11	Sloped
Rear Leg (side view)	Posty	0.55	Sickled
Rear Leg (rear view)	Hock-in	2.08	Straight
Foot Angle	Low Angle	2.56	Steep Angle
Feet & Leg Score	Low	1.95	High
Fore Udder	Loose	2.79	Strong
Rear Udder Height	Low	2.48	High
Rear Udder Width	Narrow	1.16	Wide
Udder Cleft	Weak	1.80	Strong
Udder Depth	Deep	3.36	Shallow
Front Teat Placement	Wide	1.03	Close
Rear Teat Placement	Wide	1.25	Close
Teat Length	Short	-1.04	Long



IB/MACE-G 08-24
CDN Genomic
Eval. 08-24
Zoetis 09-24

BARLEY



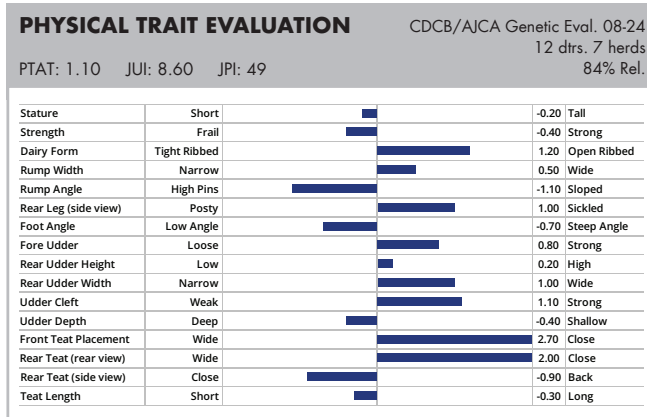
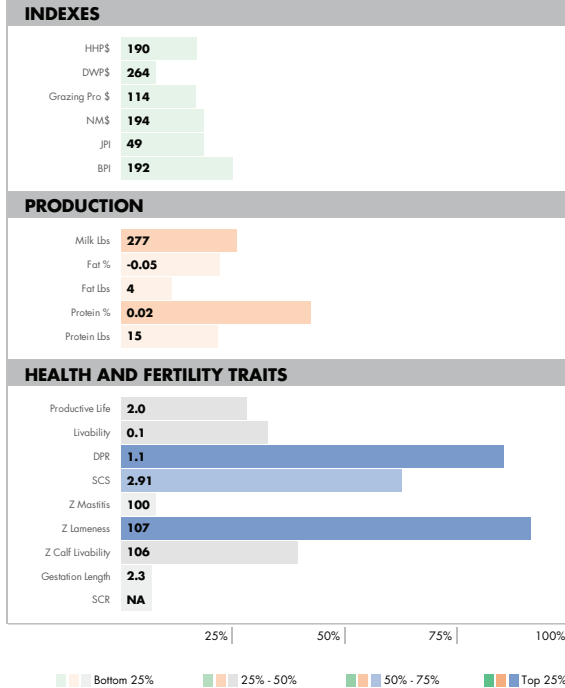
507JE01838 PINE-TREE CHROME BARLEY 2139-ET **A2A2**

CHROME X DISCO X DIMENSION JNS-TF JH1F JHPF

JERSEY NASIS: 80JJS62 BETA CASEIN: A2A2 \$12 RRP
 BPI: 192 OT: 96 MS: 102 MILKING SPEED: 100 TEMP: 102

DAM: PINE-TREE DISCO BITTY 1702

MGD: PINE-TREE DIMENSION SAW-ET VG-85
 6-05 3X 131D 3502 KGM 4.9% 172 KGF 3.3% 117 KGP



GUSA 08-24
 CDN Genomic
 Eval. 08-24
 Zoetis 09-24

CASINO



14JE00725 ELLIOTTS REGENCY CASINO-ET **A2A2**

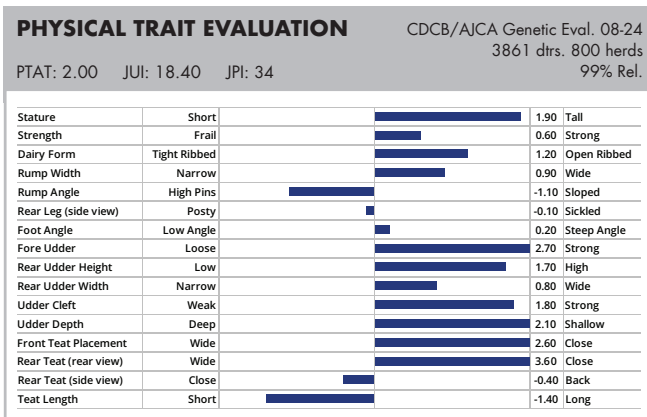
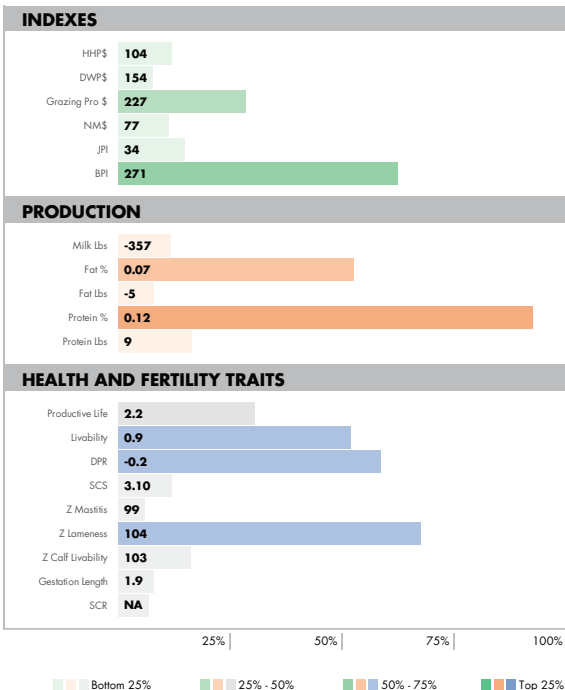
REGENCY X PREMIER X CONNECTION JNS-TF JH1F JHPF

JERSEY NASIS: 80JJM32 BETA CASEIN: A2A2 \$24 RRP
 BPI: 271 OT: 104 MS: 104 MILKING SPEED: 97 TEMP: 104

DAM: CHILLI PREMIER CINEMA-ET EX-93

4-02 3X 305D 9603 KGM 5.6% 538 KGF 3.9% 374 KGP

MGD: FAMILY HILL CONNECTION CHILLI-ET EX-91
 2-05 3X 266D 7965 KGM 7.6% 606 KGF 4.0% 315 KGP



IB/MACE-G 08-24
 CDN Genomic
 Eval. 08-24
 Zoetis 09-24

CHROME



JERSEY

7JE05004 RIVER VALLEY CECE CHROME-ET A2A2

CRITIC-P X CELEBRITY X LYON JNSC JH1F JHPF

JERSEY NASIS: 80JJK17 BETA CASEIN: A2A2 \$22 RRP \$50 SEXED

BPI: 234 OT: 101 MS: 106 MILKING SPEED: 100 TEMP: 103

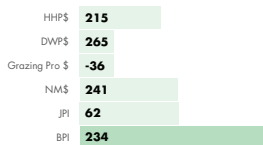
DAM: LYON CELEBRITY CECE-ET EX-91

4-03 3X 271D 10278 KGM 4.4% 453 KGF 3.6% 373 KGP

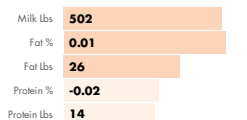
MGD: LYON CHARACTER EX-94

7-06 3X 176D 6160 KGM 5.1% 315 KGF 3.3% 205 KGP

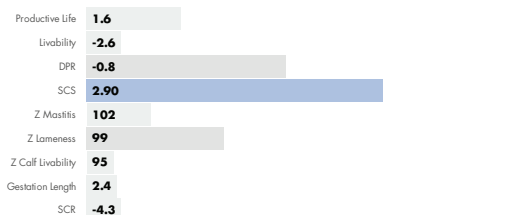
INDEXES



PRODUCTION



HEALTH AND FERTILITY TRAITS



PHYSICAL TRAIT EVALUATION

CDCB/AJCA Genetic Eval. 08-24
11820 dtrs. 1078 herds
99% Rel.

PTAT: 2.00 JUL: 17.70 JPI: 62

Stature	Short	0.70	Tall
Strength	Frail	-0.90	Strong
Dairy Form	Tight Ribbed	1.80	Open Ribbed
Rump Width	Narrow	0.30	Wide
Rump Angle	High Pins	-0.60	Sloped
Rear Leg (side view)	Posty	0.70	Sickled
Foot Angle	Low Angle	-0.20	Steep Angle
Fore Udder	Loose	1.80	Strong
Rear Udder Height	Low	1.70	High
Rear Udder Width	Narrow	1.90	Wide
Udder Cleft	Weak	1.80	Strong
Udder Depth	Deep	1.30	Shallow
Front Teat Placement	Wide	2.50	Close
Rear Teat (rear view)	Wide	2.20	Close
Rear Teat (side view)	Close	1.20	Back
Teat Length	Short	-0.10	Long



IB/MACE-G 08-24
CDN Genomic
Eval. 08-24
Zoetis 09-24

DISCO



7JE01528 OAKLANE DAZZLER DISCO 2127-ET

CHISEL X DAZZLER X VALENTINO JH1F JHPF JNS-TF

JERSEY NASIS: 80JJM41 BETA CASEIN: A1A2 \$12 RRP

BPI: 121 OT: 92 MS: 95 MILKING SPEED: 101 TEMP: 101

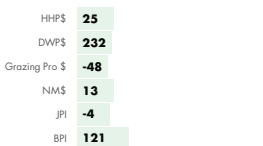
DAM: SUNSET CANYON DZZLER V MAID 2348 EX-90

6-01 3X 305D 11113 KGM 6.2% 690 KGF 4.1% 457 KGP

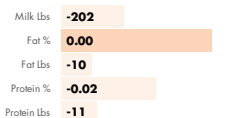
MGD: SUNSET CANYON VALEN I MAID 118-ET VG-85

1-10 3X 305D 7575 KGM 5.2% 390 KGF 3.7% 278 KGP

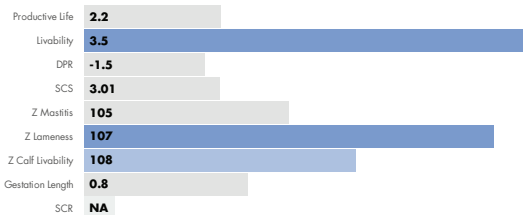
INDEXES



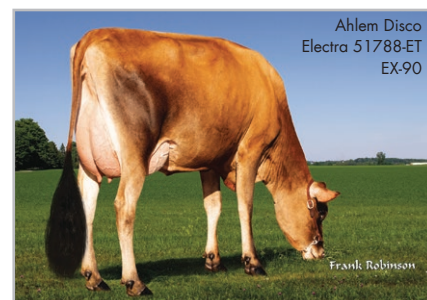
PRODUCTION



HEALTH AND FERTILITY TRAITS



Goff Disco
36341-ET EX-94



PHYSICAL TRAIT EVALUATION

CDCB/AJCA Genetic Eval. 08-24
4847 dtrs. 406 herds
99% Rel.

PTAT: 1.30 JUL: 15.10 JPI: -4

Stature	Short	1.90	Tall
Strength	Frail	-0.40	Strong
Dairy Form	Tight Ribbed	0.70	Open Ribbed
Rump Width	Narrow	0.60	Wide
Rump Angle	High Pins	-1.90	Sloped
Rear Leg (side view)	Posty	0.40	Sickled
Foot Angle	Low Angle	1.00	Steep Angle
Fore Udder	Loose	2.50	Strong
Rear Udder Height	Low	0.60	High
Rear Udder Width	Narrow	-0.80	Wide
Udder Cleft	Weak	1.20	Strong
Udder Depth	Deep	3.10	Shallow
Front Teat Placement	Wide	1.50	Close
Rear Teat (rear view)	Wide	1.30	Close
Rear Teat (side view)	Close	-1.80	Back
Teat Length	Short	-0.60	Long



IB/MACE-G 08-24
CDN Genomic
Eval. 08-24
Zoetis 09-24

FIRSTCUT



7JE02102 DUPAT FIRSTCUT-ET **A2A2**

HOLEINONE X FEARLESS X SPARKY JNS-TF JH1F JHPF

JERSEY NASIS: 80JJU51 BETA CASEIN: A2A2 \$18 RRP \$40 SEXED

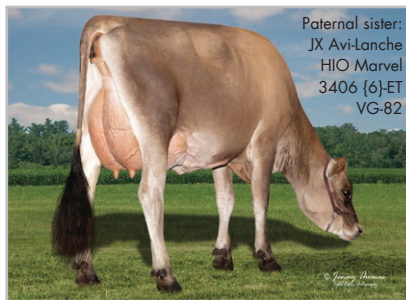
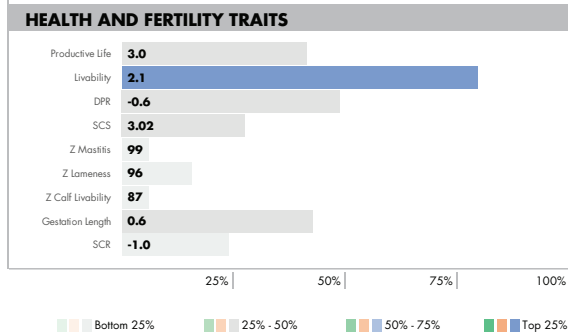
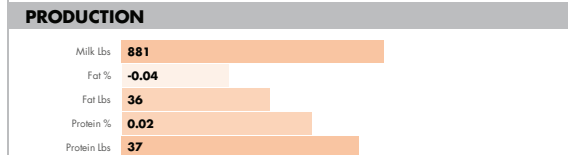
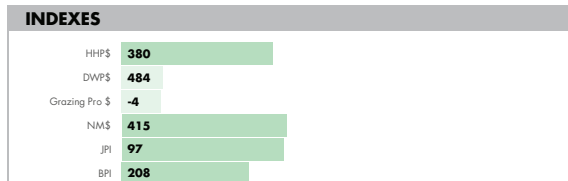
BPI: 208 OT: 99 MS: 100 MILKING SPEED: 102 TEMP: 100

DAM: DUPAT FEARLESS 15549-ET EX-93

4-08 3X 305D 10882 KGM 5.0% 547 KGF 3.7% 402 KGP

MGD: DUPAT SPARKY 2639 VG-87

7-00 3X 224D 6899 KGM 4.4% 307 KGF 3.5% 245 KGP



Paternal sister:
JX Avi-Lanche
HIO Marvel
3406 {6}-ET
VG-82



Dam: Dupat Fearless 15549-ET EX-93

PHYSICAL TRAIT EVALUATION

CDCB/AJCA Genetic Eval. 08-24

0 dtrs. 0 herds

82% Rel.

PTAT: 2.10 JUL: 19.80 JPI: 97

Stature	Short	1.90	Tall
Strength	Frail	1.10	Strong
Dairy Form	Tight Ribbed	2.50	Open Ribbed
Rump Width	Narrow	1.20	Wide
Rump Angle	High Pins	-0.80	Sloped
Rear Leg (side view)	Posty	-0.20	Sickled
Foot Angle	Low Angle	1.20	Steep Angle
Fore Udder	Loose	1.30	Strong
Rear Udder Height	Low	2.50	High
Rear Udder Width	Narrow	1.70	Wide
Udder Cleft	Weak	1.10	Strong
Udder Depth	Deep	1.10	Shallow
Front Teat Placement	Wide	0.50	Close
Rear Teat (rear view)	Wide	0.20	Close
Rear Teat (side view)	Close	1.10	Back
Teat Length	Short	0.70	Long



GUSA 08-24
CDN Genomic
Eval. 08-24
Zoetis 09-24

JX WESSON {6}

7JE01892 JX DUPAT DASHIELL WESSON {6}-ET **A2A2**

JX DASHIELL {6} X JX TRIUMPH {5} X JX LEONEL {3} JNS-TF JH1F JHPF

JERSEY NASIS: 80JJS77 BETA CASEIN: A2A2 \$16 RRP

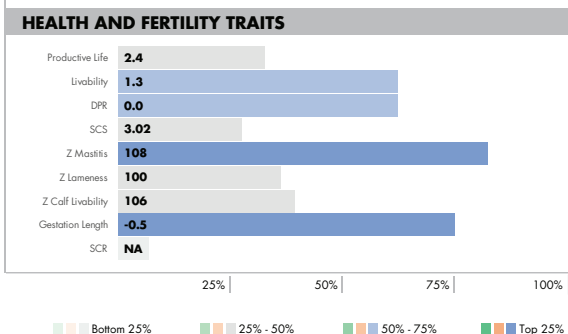
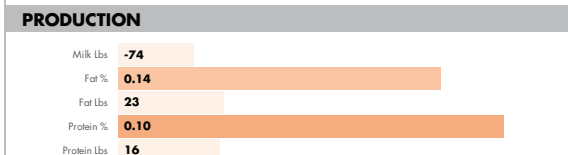
BPI: 222 OT: 100 MS: 100 MILKING SPEED: 100 TEMP: 100

DAM: JX DUPAT TRIUMPH 17851 {5} EX-90

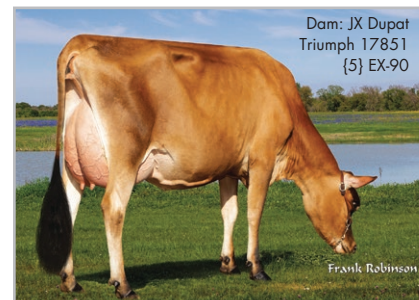
2-11 3X 305D 10020 KGM 4.5% 453 KGF 3.7% 375 KGP

MGD: JX DUPAT LEONEL 15192 {4} EX-92

7-01 3X 305D 10360 KGM 4.8% 496 KGF 3.7% 382 KGP



MGD: JX Dupat Leonel 15192
{4} EX-92



Dam: JX Dupat
Triumph 17851
{5} EX-90

PHYSICAL TRAIT EVALUATION

CDCB/AJCA Genetic Eval. 08-24

45 dtrs. 7 herds

89% Rel.

PTAT: 1.30 JUL: 19.30 JPI: 67

Stature	Short	1.60	Tall
Strength	Frail	1.50	Strong
Dairy Form	Tight Ribbed	-0.30	Open Ribbed
Rump Width	Narrow	1.90	Wide
Rump Angle	High Pins	0.30	Sloped
Rear Leg (side view)	Posty	-0.30	Sickled
Foot Angle	Low Angle	0.40	Steep Angle
Fore Udder	Loose	2.20	Strong
Rear Udder Height	Low	1.30	High
Rear Udder Width	Narrow	0.20	Wide
Udder Cleft	Weak	0.60	Strong
Udder Depth	Deep	2.00	Shallow
Front Teat Placement	Wide	0.80	Close
Rear Teat (rear view)	Wide	0.00	Close
Rear Teat (side view)	Close	1.10	Back
Teat Length	Short	0.60	Long



GUSA 08-24
CDN Genomic
Eval. 08-24
Zoetis 09-24

MATT



7JE01344 WILSONVIEW IF MATT-ET **A2A2**

IRWIN X TBONE X Q IMPULS JNS-TF JH1F JHPF

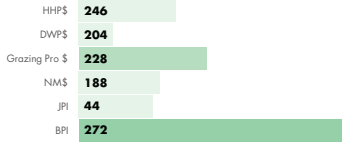
JERSEY NASIS: 80JJJ42 BETA CASEIN: A2A2 \$15 RRP \$50 SEXED

BPI: 272 OT: 104 MS: 105 MILKING SPEED: 103 TEMP: 104

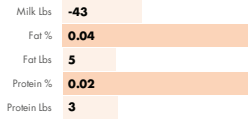
DAM: WILSONVIEW TBONE MILESTONE-ET VG-86
7-02 3X 305D 9435 KGM 4.4% 417 KGF 3.7% 347 KGP

MGD: IMPULSIVE MOMENT AT WILSONVIEW-ET VG-88
7-04 3X 305D 10746 KGM 3.8% 412 KGF 3.2% 342 KGP

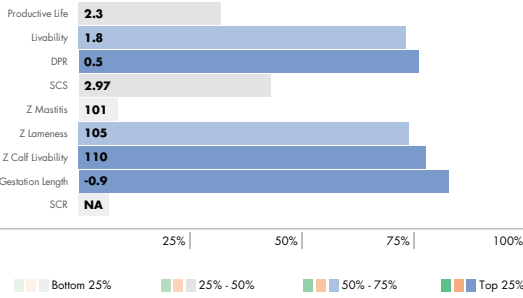
INDEXES



PRODUCTION



HEALTH AND FERTILITY TRAITS



PHYSICAL TRAIT EVALUATION

CDCB/AJCA Genetic Eval. 08-24
2578 dtrs. 566 herds
99% Rel.

PTAT: 0.90 JUL: 15.60 JPI: 44

Stature	Short	0.30	Tall
Strength	Frail	-0.10	Strong
Dairy Form	Tight Ribbed	0.50	Open Ribbed
Rump Width	Narrow	-0.30	Wide
Rump Angle	High Pins	-0.10	Sloped
Rear Leg (side view)	Posty	1.40	Sickled
Foot Angle	Low Angle	-0.10	Steep Angle
Fore Udder	Loose	1.60	Strong
Rear Udder Height	Low	0.50	High
Rear Udder Width	Narrow	0.50	Wide
Udder Cleft	Weak	0.40	Strong
Udder Depth	Deep	1.60	Shallow
Front Teat Placement	Wide	2.30	Close
Rear Teat (rear view)	Wide	1.30	Close
Rear Teat (side view)	Close	-0.40	Back
Teat Length	Short	-0.40	Long



IB/MACEG 08-24
CDN Genomic
Eval. 08-24
Zoetis 09-24

MCCOMB



507JE01874 ROWLEYS 80 URLACHER MCCOMB-ET **A2A2**

JX URLACHER {6} X CHROME X VALSON JNS-TF JH1F JHPF

JERSEY NASIS: 80JJT43 BETA CASEIN: A2A2 \$16 RRP \$35 SEXED

BPI: 294 OT: 101 MS: 99 MILKING SPEED: 100 TEMP: 102

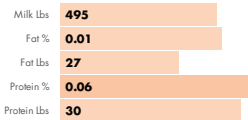
DAM: PRO-HART CHROME LORETTA {6} EX-90
5-02 3X 305D 8342 KGM 4.6% 380 KGF 3.6% 302 KGP

MGD: PRO-HART VALSON LETITIA {5}-ET VG-85
4-02 3X 305D 8909 KGM 4.5% 404 KGF 3.2% 283 KGP

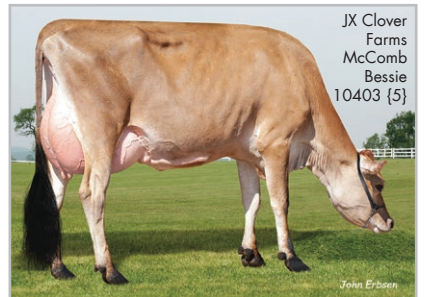
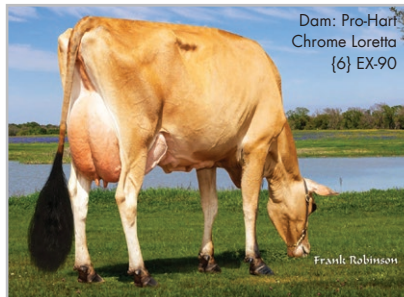
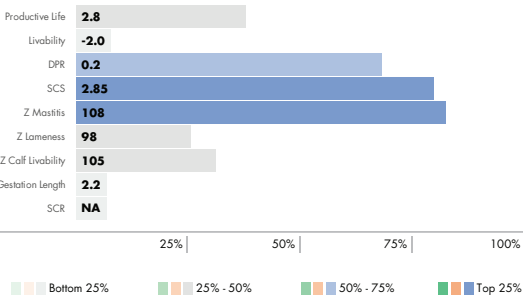
INDEXES



PRODUCTION



HEALTH AND FERTILITY TRAITS



PHYSICAL TRAIT EVALUATION

CDCB/AJCA Genetic Eval. 08-24
127 dtrs. 25 herds
94% Rel.

PTAT: 1.30 JUL: 20.20 JPI: 119

Stature	Short	3.10	Tall
Strength	Frail	1.10	Strong
Dairy Form	Tight Ribbed	0.60	Open Ribbed
Rump Width	Narrow	1.10	Wide
Rump Angle	High Pins	-1.50	Sloped
Rear Leg (side view)	Posty	-0.50	Sickled
Foot Angle	Low Angle	0.60	Steep Angle
Fore Udder	Loose	3.00	Strong
Rear Udder Height	Low	0.90	High
Rear Udder Width	Narrow	-0.20	Wide
Udder Cleft	Weak	-0.20	Strong
Udder Depth	Deep	2.80	Shallow
Front Teat Placement	Wide	-0.40	Close
Rear Teat (rear view)	Wide	-0.60	Close
Rear Teat (side view)	Close	0.40	Back
Teat Length	Short	0.90	Long



GUSA 08-24
CDN Genomic
Eval. 08-24
Zoetis 09-24

MEGAPOWER



JERSEY

507JE05011 RIVER VALLEY PF MEGAPOWER-ET **A2A2**

MEGATRON X TBONE X ABE {6} JNS-TF JH1C JHPF

JERSEY NASIS: 80JJK29 BETA CASEIN: A2A2 \$18 RRP

BPI: 186 OT: 101 MS: 103 MILKING SPEED: 102 TEMP: 103

DAM: HI-KEL TBONE PFENNIG-ET EX-90

5-04 3X 215D 6083 KGM 5.5% 336 KGF 3.6% 218 KGP

MGD: PATS PERFECT PHOEBE VG-85

1-11 2X 305D 8033 KGM 5.2% 420 KGF 3.8% 308 KGP

INDEXES

HHP\$	57
DWP\$	120
Grazing Pro \$	-70
NMS	158
JPI	33
BPI	186

PRODUCTION

Milk Lbs	270
Fat %	0.16
Fat Lbs	44
Protein %	0.01
Protein Lbs	12

HEALTH AND FERTILITY TRAITS

Productive Life	0.1
Livability	-2.8
DPR	-2.2
SCS	3.23
Z Mastitis	94
Z Lameness	104
Z Calf Livability	103
Gestation Length	1.4
SCR	NA

Bottom 25% 25% - 50% 50% - 75% Top 25%



PHYSICAL TRAIT EVALUATION

CDCB/AJCA Genetic Eval. 08-24

1340 dtrs. 305 herds

99% Rel.

PTAT: 1.10 JUL: 15.60 JPI: 33

Stature	Short	1.60	Tall
Strength	Frail	0.80	Strong
Dairy Form	Tight Ribbed	1.20	Open Ribbed
Rump Width	Narrow	0.20	Wide
Rump Angle	High Pins	-0.20	Sloped
Rear Leg (side view)	Posty	0.50	Sickled
Foot Angle	Low Angle	-0.10	Steep Angle
Fore Udder	Loose	1.80	Strong
Rear Udder Height	Low	1.50	High
Rear Udder Width	Narrow	1.00	Wide
Udder Cleft	Weak	1.40	Strong
Udder Depth	Deep	0.40	Shallow
Front Teat Placement	Wide	0.70	Close
Rear Teat (rear view)	Wide	0.20	Close
Rear Teat (side view)	Close	0.50	Back
Teat Length	Short	1.80	Long



IB/MACE-G 08-24
CDN Genomic Eval. 08-24
Zoetis 09-24

SRIXON {6}



7JE01750 VICTORY CRAZE SRIXON {6}

CRAZE X MACKENZIE X MAGNUM JNS-TF JH1F JHPF

JERSEY NASIS: 80JJR50 BETA CASEIN: A1A2 \$12 RRP

BPI: 236 OT: 100 MS: 100 MILKING SPEED: 100 TEMP: 101

DAM: VICTORY MACKENZIE 45599 {5}

MGD: VICTORY MAGNUM 41085 {4}

INDEXES

HHP\$	68
DWP\$	152
Grazing Pro \$	6
NMS	279
JPI	26
BPI	236

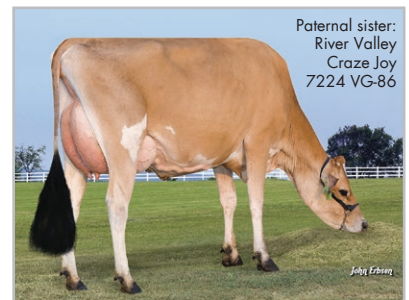
PRODUCTION

Milk Lbs	54
Fat %	0.08
Fat Lbs	19
Protein %	0.02
Protein Lbs	6

HEALTH AND FERTILITY TRAITS

Productive Life	3.2
Livability	2.0
DPR	-2.7
SCS	3.06
Z Mastitis	100
Z Lameness	98
Z Calf Livability	85
Gestation Length	-2.0
SCR	NA

Bottom 25% 25% - 50% 50% - 75% Top 25%



PHYSICAL TRAIT EVALUATION

CDCB/AJCA Genetic Eval. 08-24

277 dtrs. 43 herds

96% Rel.

PTAT: 0.50 JUL: 14.80 JPI: 26

Stature	Short	-0.80	Tall
Strength	Frail	-1.20	Strong
Dairy Form	Tight Ribbed	0.50	Open Ribbed
Rump Width	Narrow	-1.10	Wide
Rump Angle	High Pins	-0.10	Sloped
Rear Leg (side view)	Posty	0.50	Sickled
Foot Angle	Low Angle	-0.30	Steep Angle
Fore Udder	Loose	0.80	Strong
Rear Udder Height	Low	1.30	High
Rear Udder Width	Narrow	-0.90	Wide
Udder Cleft	Weak	1.10	Strong
Udder Depth	Deep	2.10	Shallow
Front Teat Placement	Wide	-0.50	Close
Rear Teat (rear view)	Wide	0.60	Close
Rear Teat (side view)	Close	0.70	Back
Teat Length	Short	1.40	Long



IB/MACE-G 08-24
CDN Genomic Eval. 08-24
Zoetis 09-24

TERMS OF USE. WARRANTY STATEMENT Products sold by World Wide Sires, Ltd. or its affiliates to a buyer shall not be used other than as authorized by the terms and conditions in the sales invoice. Each conventionally processed semen straw (not sex sorted) shall be used only for insemination of a female bovine. ALL OTHER USES OF BOVINE SEMEN FROM WORLD WIDE SIRES, LTD. AND ITS AFFILIATES ARE STRICTLY PROHIBITED WITHOUT THE PRIOR WRITTEN CONSENT OF SELECT Sires INC. INCLUDING (WITHOUT LIMITATION) GENOTYPING, SEQUENCING, CLONING, GENETIC ANALYSIS, GENETIC MANIPULATION OR FOR RESEARCH. World Wide Sires, Ltd., Select Sires Inc., its member cooperatives, its agents or employees cannot and do not guarantee the conception rate, gender, quality or productivity to be obtained in connection with the use of its products or recommended techniques. There is no guarantee or warranty that the bulls marketed do not carry any unknown or undesirable genetic defects, haplotypes and/or recessives. It makes no warranties of any kind whatsoever, expressed or implied, which extend beyond the description of its products and hereby disclaims all warranties of merchantability and fitness for a particular purpose. In the unlikely event that any of our products shall be proven to be defective, damages resulting from their use shall exclude consequential damages and be limited to the purchase price of the product.

Limitations and Conditions of Sale: gender SELECTed semen shall be used only for the single insemination of one female bovine during natural ovulation with the intent to produce single offspring unless specifically approved on an individual customer basis by Sexing Technologies in writing. As a condition of purchasing gender SELECTed semen, the purchaser agrees that gender SELECTed semen will not be reverse sorted or re-sorted unless specifically permitted, in advance, on a case-by-case basis by Select Sires in writing. Select Sires intends to monitor the use of the gender SELECTed semen and vigorously enforce these restrictions on use. Please see <http://www.selectsires.com/designations/genderselected.html> for additional details.